

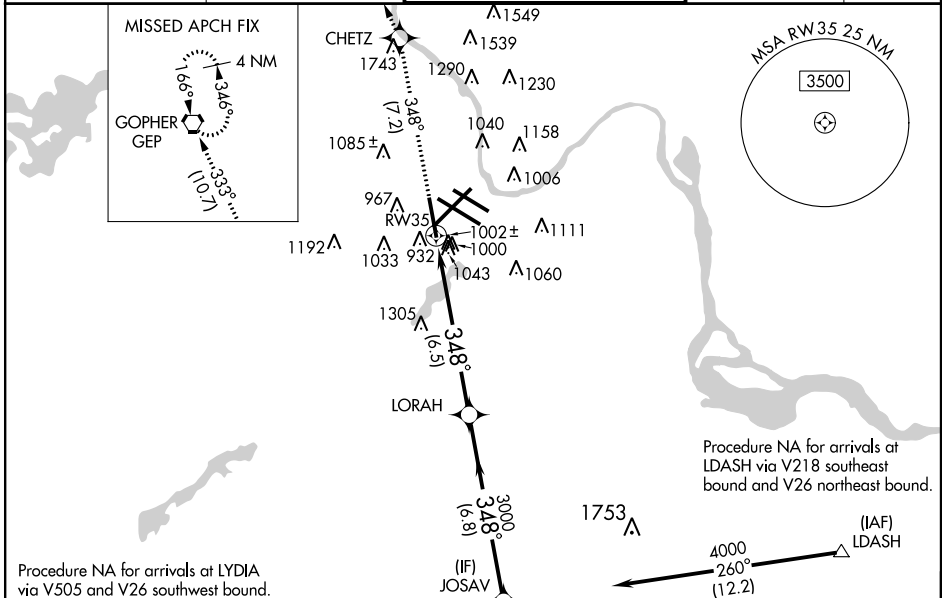
APP CRS 348°	Rwy Idg 8000
	TDZE 834
	Apt Elev 841

RNAV (RNP) Y RWY 35

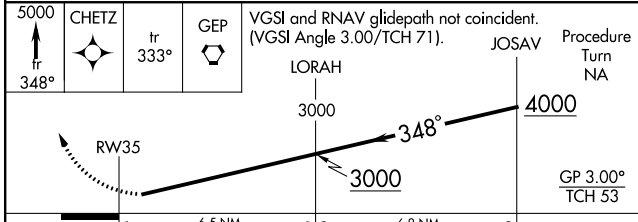
MINNEAPOLIS-ST PAUL INTL/WOLD-CHAMBERLAIN (MSP)

<p>NA Visibility reduction by helicopters NA. When VGS1 inop, procedure NA at night. GPS required. For uncompensated Baro-VNAV systems, procedure NA below -13°C (8°F) or above 47°C (117°F). For inoperative ALSF, increase RNP 0.19 visibility to 1½ and RNP 0.30 visibility to 1¾.</p>	<p>ALSF-2</p>	<p>MISSED APPROACH: Climb to 5000 via 348° track to CHETZ and via 333° track to GEP VORTAC and hold, continue climb-in-hold to 5000.</p>
--	---------------	--

<p>ATIS ARR 135.35 239.275 DEP 120.8</p>	<p>MINNEAPOLIS APP CON 119.3 335.5</p>	<p>MINNEAPOLIS TOWER 123.95 273.55 (12L-30R) 126.7 273.55 (12R-30L, 4-22) 123.675 273.55 (17-35)</p>	<p>GND CON N 121.8 348.6 S 121.9 348.6 W 127.925</p>	<p>CLNC DEL 133.2</p>
--	---	---	---	----------------------------------

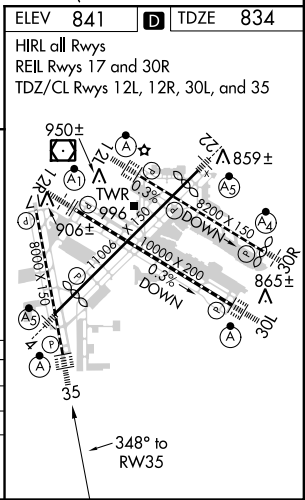


<p>5000 ↑ fr 348°</p>	<p>CHETZ</p>	<p>fr 333°</p>	<p>GEP</p>	<p>VGS1 and RNAV glidepath not coincident. (VGS1 Angle 3.00/TCH 71).</p>
-----------------------------------	--------------	--------------------	------------	--



CATEGORY	A	B	C	D
RNP 0.19 DA		1286/50	452 (500-1)	
RNP 0.30 DA		1329/60	495 (500-1¼)	

AUTHORIZATION REQUIRED



NC-1, 07 FEB 2013 to 07 MAR 2013

NC-1, 07 FEB 2013 to 07 MAR 2013