


RNAV (GPS) RWY 4

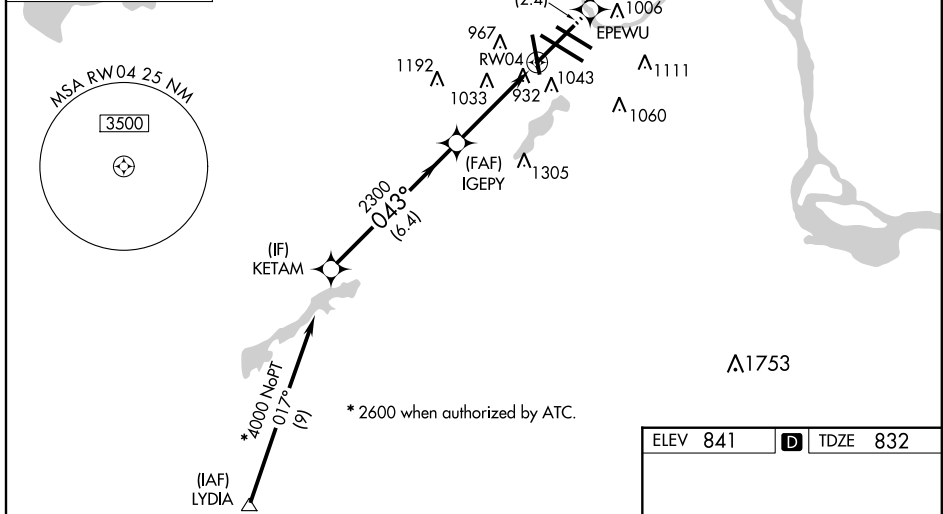
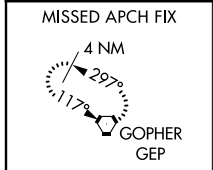
MINNEAPOLIS-ST PAUL INTL/WOLD-CHAMBERLAIN (MSP)

APP CRS 043°	Rwy Idg 9456
	TDZE 832
	Apt Elev 841

⚠ For inoperative MALSR, increase LNAV/VNAV and LNAV Cat E visibility to 1¾.
⚠ For uncompensated Baro-VNAV systems, LNAV/VNAV NA below -1.6°C (4°F) or above 47°C (116°F).
 DME/DME RNP-0.3 NA.

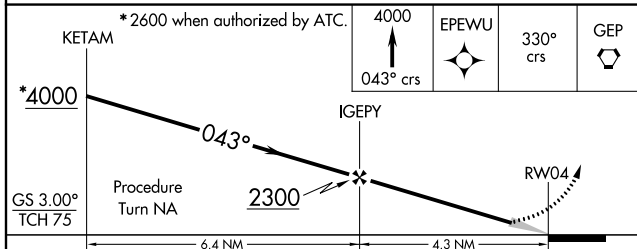
MALSR

MISSED APPROACH: Climb to 4000 via 043° course to EPEWU WP then via 330° course to GEP VORTAC and hold.

ATIS ARR 135.35 239.275 DEP 120.8	MINNEAPOLIS APP CON 119.3 335.5	MINNEAPOLIS TOWER 123.95 273.55 (12L-30R) 126.7 273.55 (12R-30L, 4-22) 123.675 273.55 (17-35)	GND CON N 121.8 348.6 S 121.9 348.6 W 127.925	CLNC DEL 133.2
-------------------------------------------------------	-------------------------------------------	-----------------------------------------------------------------------------------------------------------------------------	-----------------------------------------------------------------------------	--------------------------



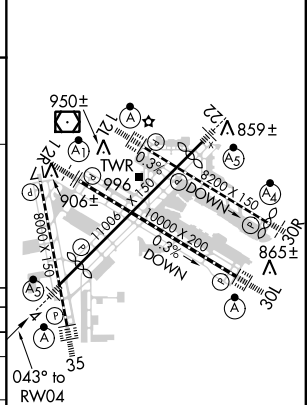
NC-1, 07 FEB 2013 to 07 MAR 2013

NC-1, 07 FEB 2013 to 07 MAR 2013



ELEV 841	D TDZE 832
----------	-------------------

CATEGORY	A	B	C	D	E
GLS PA DA	NA				
LNAV/VNAV DA	1296/50 464 (500-1)				
LNAV MDA	1300/24	468 (500-½)	1300/40 468 (500-¾)	1300/50 468 (500-1)	1300/60 468 (500-1½)
CIRCLING	1360-1	519 (600-1)	1360-1½ 519 (600-1½)	1460-2 619 (700-2)	1660-3 819 (900-3)



RNAV (GPS) RWY 4