

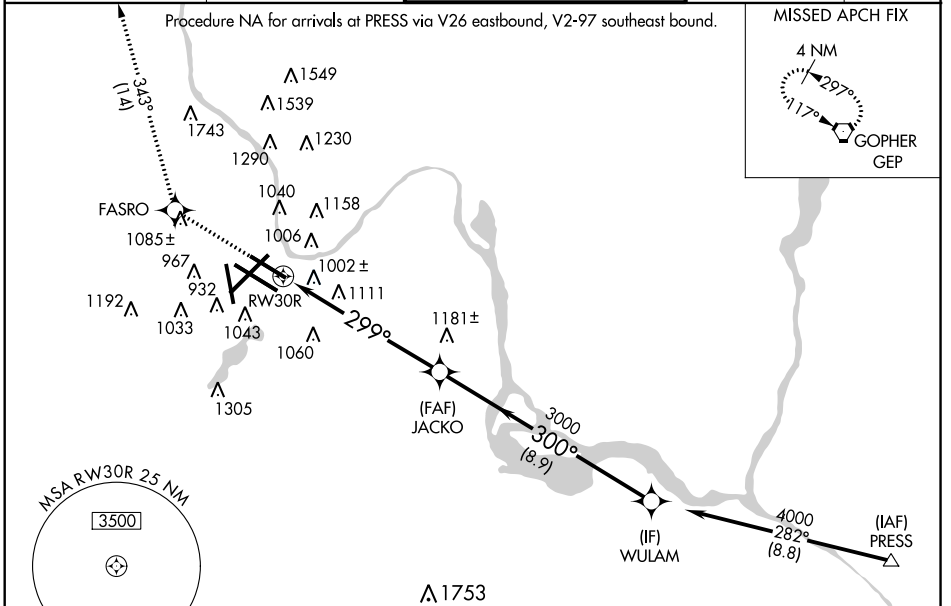
WAAS CH 60925 W30B	APP CRS 299°	Rwy Idg TDZE 823 Apt Elev 841	8000
--	------------------------	---	-------------

RNAV (GPS) RWY 30R

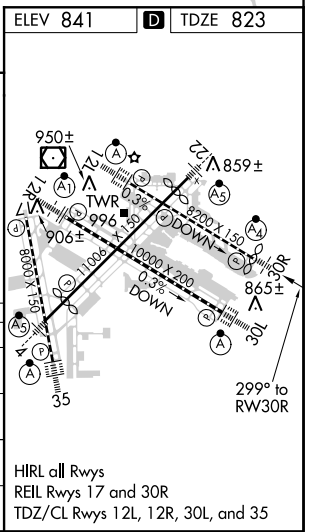
MINNEAPOLIS-ST PAUL INTL/WOLD-CHAMBERLAIN (MSP)

<p>⚠ DME/DME RNP-0.3 NA. Baro-VNAV NA below -1.6°C (4°F). Simultaneous approach authorized with RNAV (GPS) Rwy 30L. LNAV procedure NA during simultaneous operations. Use of FD or AP providing RNAV track guidance required during simultaneous operations.</p>	<p>MALSF </p>	<p>MISSED APPROACH: Climb to 5000 direct FASRO and via 343° track to GEP VORTAC and hold.</p>
---	-------------------	---

<p>ATIS ARR 135.35 239.275 DEP 120.8</p>	<p>MINNEAPOLIS APP CON 119.3 335.5</p>	<p>MINNEAPOLIS TOWER 123.95 273.55 (12L-30R) 126.7 273.55 (12R-30L, 4-22) 123.675 273.55 (17-35)</p>	<p>GND CON N 121.8 348.6 S 121.9 348.6 W 127.925</p>	<p>CLNC DEL 133.2</p>
--	---	---	---	----------------------------------



5000	FASRO	tr 343°	GEP	VGSI and RNAV glidepath not coincident (VGSI Angle 3.00/TCH 73).	
*LNAV only	RW30R	JACKO	WULAM	4000	
	*1.6 NM to RW30R			Procedure Turn NA	
	-1.6 NM	5 NM	8.9 NM	GS 3.00° TCH 55'	
CATEGORY	A	B	C	D	E
LPV DA	1073/40 250 (300-¾)				
LNAV/VNAV DA	1294-1¾ 471 (500-1¾)				
LNAV MDA	1400/50	577 (600-1)	1400-1½ 577 (600-1½)	1400-1¾ 577 (600-1¾)	1400-2 577 (600-2)
CIRCLING	1400-1	559 (600-1)	1400-1½ 559 (600-1½)	1460-2 619 (700-2)	1660-3 819 (900-3)



NC-1, 07 FEB 2013 to 07 MAR 2013

NC-1, 07 FEB 2013 to 07 MAR 2013