


RNAV (GPS) RWY 22

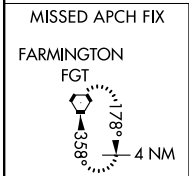
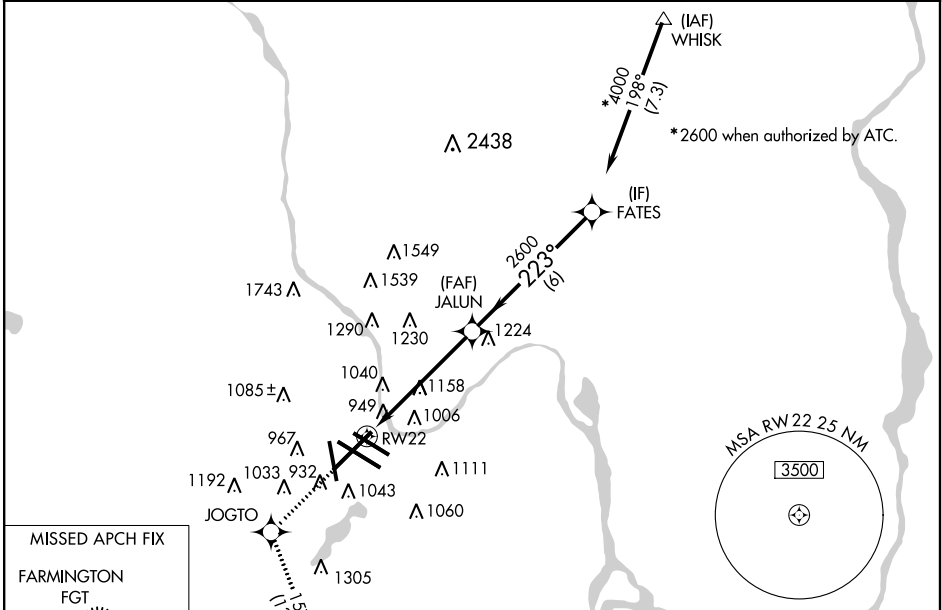
MINNEAPOLIS-ST PAUL INTL/WOLD-CHAMBERLAIN (MSP)

| | | |
|--|------------------------|--|
| WAAS CH 60927 W22A | APP CRS 223° | Rwy Idg 10006 TDZE 828 Apt Elev 841 |
|--|------------------------|--|

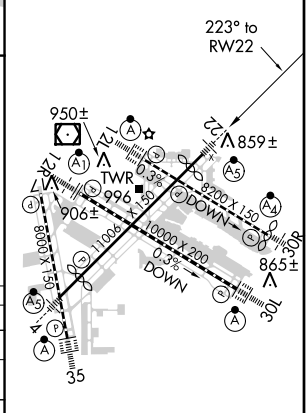
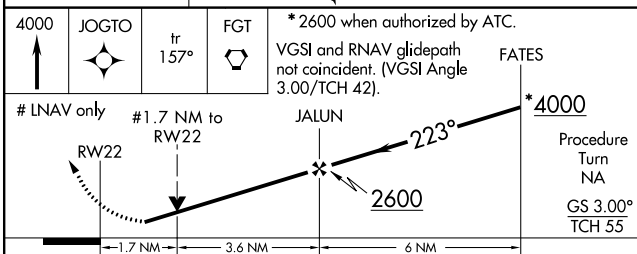
⚠ DME/DME RNP-0.3 NA.
Baro-VNAV NA below -16°C (4°F).
For inoperative MALSR, increase LPV all Cats visibility to RVR 6000,
increase LNAV Cat A and B visibility to RVR 5000.

MALSR

MISSED APPROACH: Climb to 4000 direct JOGTO and via 157° track to FGT VORTAC and hold.

| | | | | |
|---|---|---|---|--------------------------|
| ATIS ARR 135.35 239.275 DEP 120.8 | MINNEAPOLIS APP CON 119.3 335.5 | MINNEAPOLIS TOWER 123.95 273.55 (12L-30R) 126.7 273.55 (12R-30L, 4-22) 123.675 273.55 (17-35) | GND CON N 121.8 348.6 S 121.9 348.6 W 127.925 | CLNC DEL 133.2 |
|---|---|---|---|--------------------------|



| | |
|----------|-------------------|
| ELEV 841 | D TDZE 828 |
|----------|-------------------|



| | | | | | |
|--------------|----------------------|----------------------|----------------------|----------------------|---------------------|
| CATEGORY | A | B | C | D | E |
| LPV DA | 1190/40 362 (400-¾) | | | | |
| LNAV/VNAV DA | 1227/40 399 (400-¾) | | | | |
| LNAV MDA | 1420/40 592 (600-¾) | 1420/50 592 (600-1) | 1420/60 592 (600-1½) | 1420-1½ 592 (600-1½) | 1227/50 399 (400-1) |
| CIRCLING | 1420-1¼ 579 (600-1¼) | 1420-1½ 579 (600-1½) | 1460-2 619 (700-2) | 1660-3 819 (900-3) | |

HIRL all Rwy's
REIL Rwy's 17 and 30R
TDZ/CL Rwy's 12L, 12R, 30L, and 35

RNAV (GPS) RWY 22

NC-1, 07 FEB 2013 to 07 MAR 2013

NC-1, 07 FEB 2013 to 07 MAR 2013