

WAAS CH 45525 W12B	APP CRS 119°	Rwy Idg 7620 TDZE 839 Apt Elev 841
--	------------------------	---

RNAV (GPS) RWY 12L

MINNEAPOLIS-ST PAUL INTL/WOLD-CHAMBERLAIN (MSP)

⚠ For inop ALSF, increase LPV Cat E visibility to RVR 4000, LNAV/VNAV Cat E visibility to 1½ mile and LNAV Cat E visibility to 2½ mile. For uncompensated Baro-VNAV systems, LNAV/VNAV NA below -16°C (4°F) or above 47°C (116°F). DME/DME RNP- 0.3 NA. Simultaneous approach authorized with Rwy 12R. LNAV procedure NA during simultaneous operations. Use of FD or AP providing RNAV track guidance required during simultaneous operations.

ALSF-2
A

MISSED APPROACH: Climb to 4000 direct JACKO and left turn via track 011° to WHISK and hold.

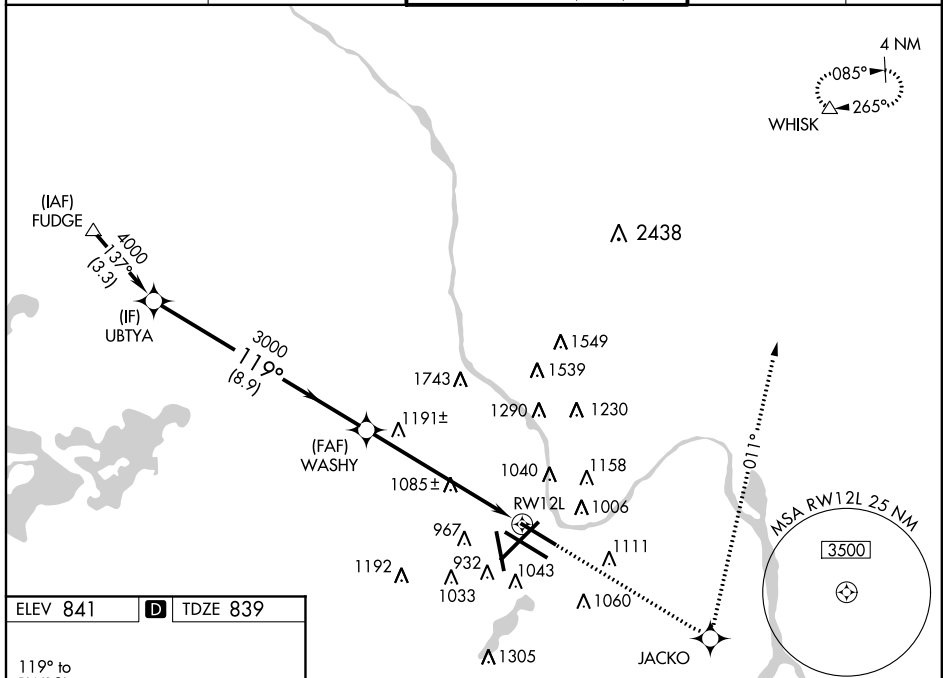
ATIS ARR 135.35 239.275 DEP 120.8

MINNEAPOLIS APP CON 119.3 335.5

MINNEAPOLIS TOWER 123.95 273.55 (12L-30R) 126.7 273.55 (12R-30L, 4-22) 123.675 273.55 (17-35)

GND CON N 121.8 348.6 S 121.9 348.6 W 127.925

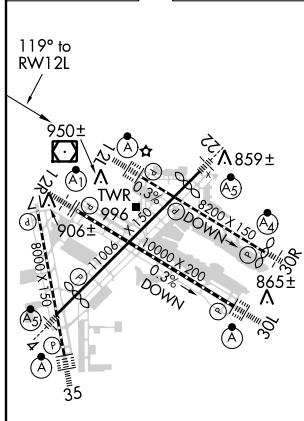
CLNC DEL 133.2



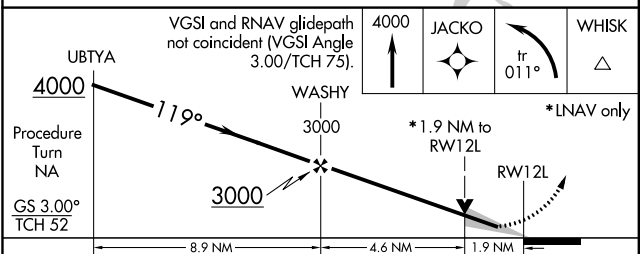
NC-1, 07 FEB 2013 to 07 MAR 2013

NC-1, 07 FEB 2013 to 07 MAR 2013

ELEV 841	D	TDZE 839
----------	----------	----------



HIRL all Rwys
REIL Rwys 17 and 30R
TDZ/CL Rwys 12L, 12R, 30L, and 35



Procedure	A	B	C	D	E
Turn					
NA					
GS 3.00°					
TCH 52					
LPV DA	1039/24 200 (200-½)				
LNAV/VNAV DA	1248/50 409 (500-1)				
LNAV MDA	1520/24	681 (700-½)	1520-1½ 681 (700-½)	1520-1¾ 681 (700-¾)	1520-2 681 (700-2)
CIRCLING	1520-1	679 (700-1)	1520-2 679 (700-2)	1520-2¼ 679 (700-2¼)	1660-3 819 (900-3)

RNAV (GPS) RWY 12L