

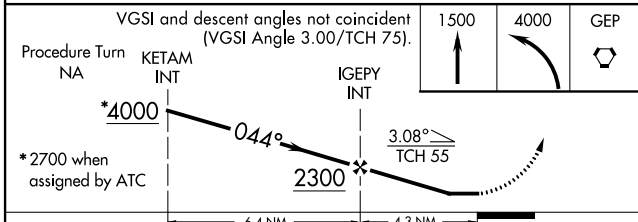
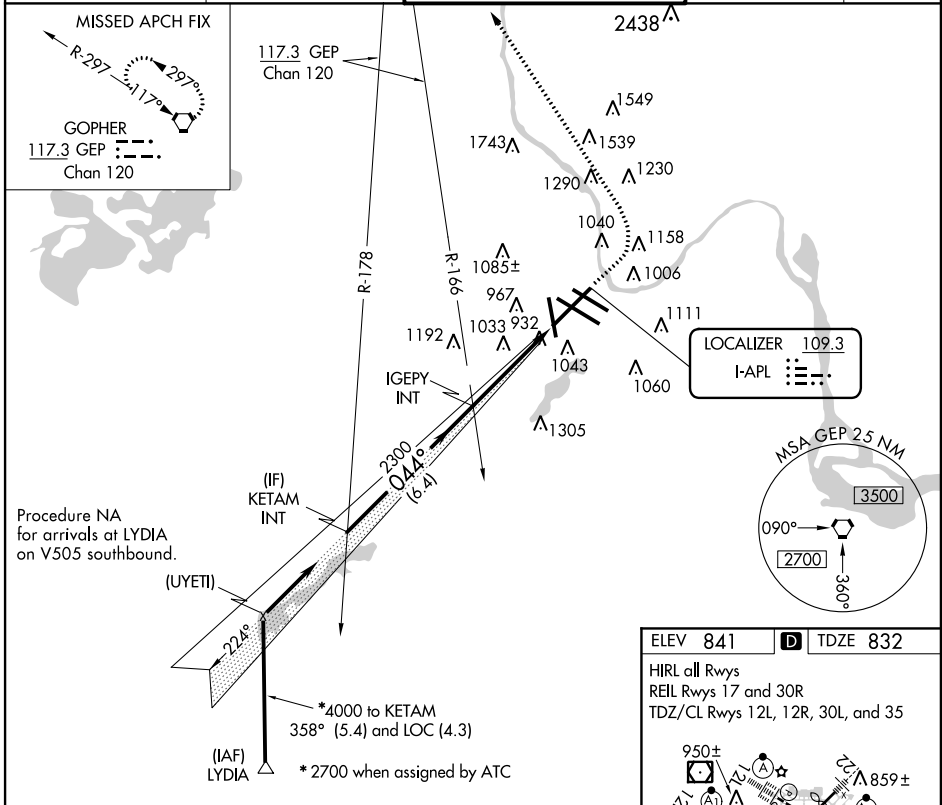
LOC I-APL <b>109.3</b>	APP CRS <b>044°</b>	Rwy Idg <b>9456</b>
		TDZE <b>832</b>
		Apt Elev <b>841</b>

# LOC RWY 4

MINNEAPOLIS-ST PAUL INTL/WOLD-CHAMBERLAIN (MSP)

	For inoperative MALSR, increase S-4 Cat E visibility to 1 3/4 mile.	MALSR 	MISSED APPROACH: Climb to 1500 then climbing left turn to 4000 direct GEP VORTAC and hold.

ATIS ARR <b>135.35 239.275</b> DEP <b>120.8</b>	MINNEAPOLIS APP CON <b>119.3 335.5</b>	MINNEAPOLIS TOWER <b>123.95 273.55</b> (12L-30R) <b>126.7 273.55</b> (12R-30L, 4-22) <b>123.675 273.55</b> (17-35)	GND CON <b>N 121.8 348.6</b> <b>S 121.9 348.6</b> <b>W 127.925</b>	CLNC DEL <b>133.2</b>
---	---	---	---	--------------------------



ELEV 841 **D** TDZE 832

HIRL all Rwys  
 REIL Rwys 17 and 30R  
 TDZ/CL Rwys 12L, 12R, 30L, and 35

044° 4.3 NM from FAF

FAF to MAP 4.3 NM

Knots	60	90	120	150	180
Min:Sec	4:18	2:52	2:09	1:43	1:26

NC-1, 07 FEB 2013 to 07 MAR 2013

NC-1, 07 FEB 2013 to 07 MAR 2013