

LOC I-SIJ 110.5	APP CRS 224°	Rwy Idg 10006
		TDZE 828
		Apt Elev 841

LOC RWY 22

MINNEAPOLIS-ST PAUL INTL/WOLD-CHAMBERLAIN (MSP)

⚠ For inoperative MALS increase S-22 Cat A and B visibility to RVR 5000 and Cat E visibility to 2 miles. Visibility reduction by helicopters NA.



MISSED APPROACH: Climb to 2000 then climbing right turn to 4000 direct FCM VOR/DME and hold, continue climb-in-hold to 4000.

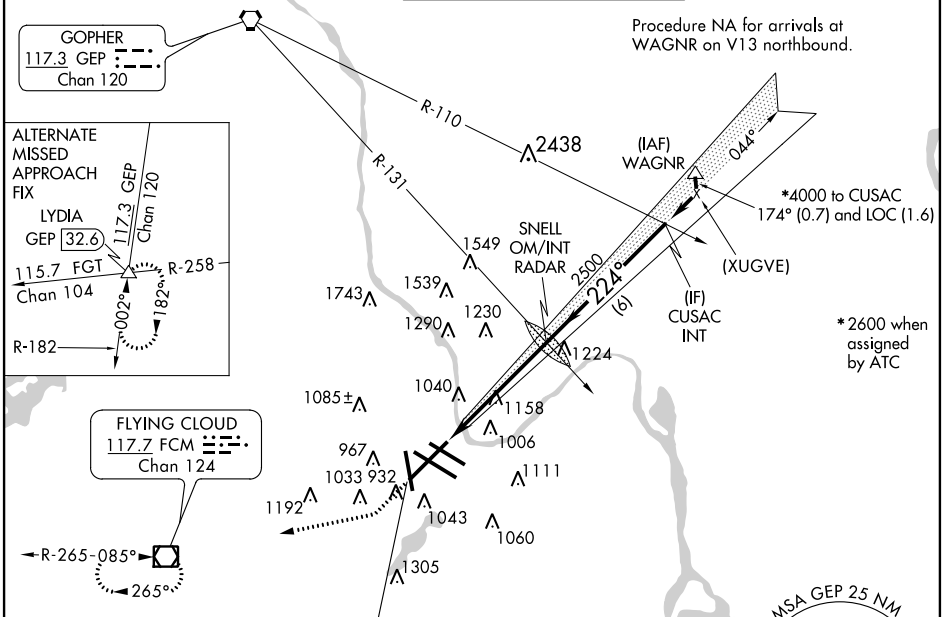
ATIS
ARR **135.35 239.275**
DEP **120.8**

MINNEAPOLIS APP CON
119.3 335.5

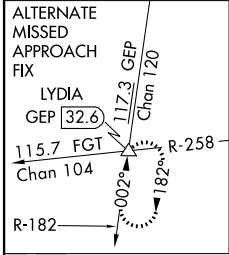
MINNEAPOLIS TOWER
123.95 273.55 (12L-30R)
126.7 273.55 (12R-30L, 4-22)
123.675 273.55 (17-35)

GND CON
N 121.8 348.6
S 121.9 348.6
W 127.925

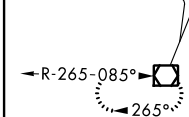
CLNC DEL
133.2



GOPHER
117.3 GEP
Chan 120



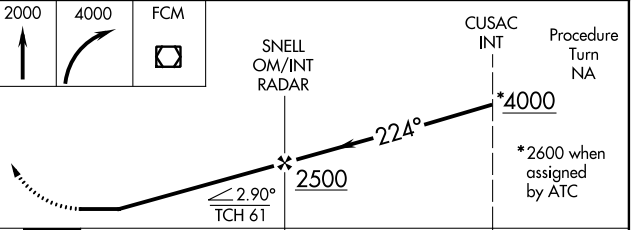
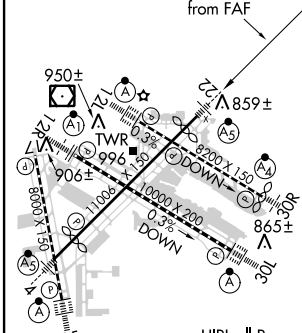
FLYING CLOUD
117.7 FCM
Chan 124



ELEV 841 **D** TDZE 828

224° 5.2 NM from FAF

LOCALIZER 110.5
I-SIJ



FAF to MAP 5.2 NM

Knots	60	90	120	150	180
Min:Sec	5:12	3:28	2:36	2:05	1:44

CATEGORY	A	B	C	D	E
S-22	1420/40	592 (600-¾)	1420/50 592 (600-1)	1420/60 592 (600-1½)	1420-1½ 592 (600-1½)
CIRCLING	1420-1	579 (600-1)	1420-1½ 579 (600-1½)	1460-2 619 (700-2)	1660-3 819 (900-3)

LOC RWY 22

NC-1, 07 FEB 2013 to 07 MAR 2013

NC-1, 07 FEB 2013 to 07 MAR 2013