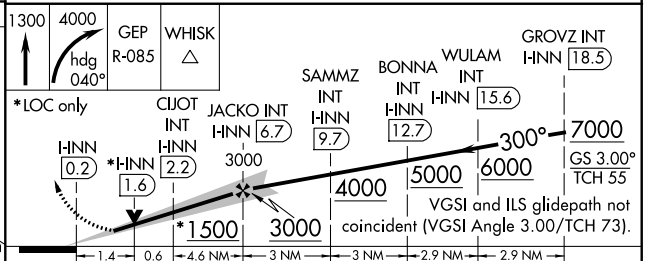
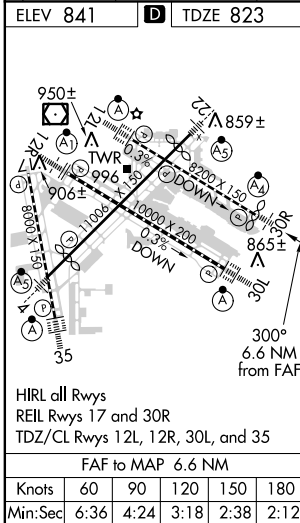
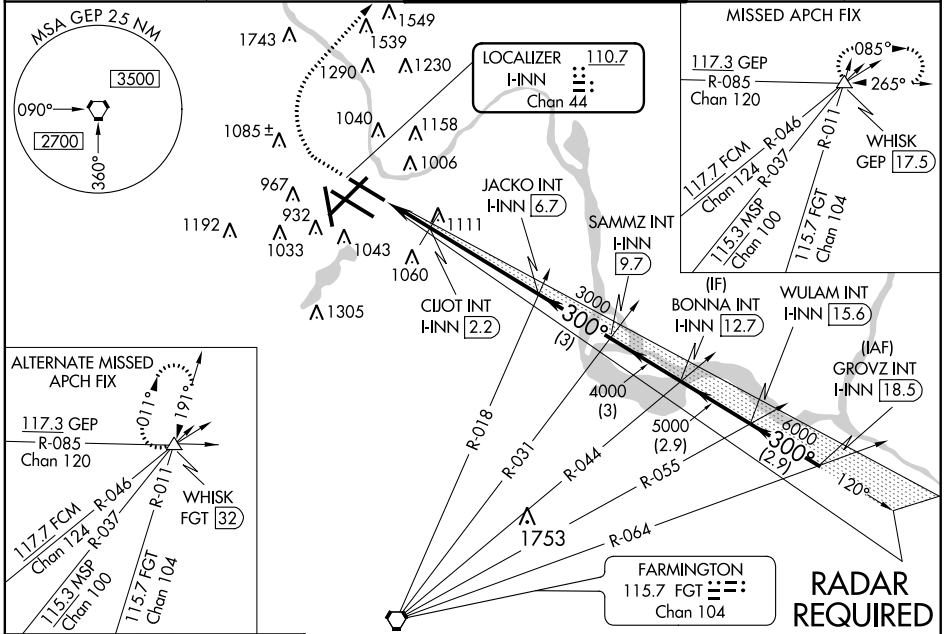


| | | | |
|---|------------------------|-----------------------------|---|
| LOC/DME I-INN 110.7 Chan 44 | APP CRS 300° | Rwy Idg TDZE Apt Elev | 8000 823 841 |
|---|------------------------|-----------------------------|---|

ILS or LOC RWY 30R

MINNEAPOLIS-ST PAUL INTL/WOLD-CHAMBERLAIN (MSP)

| | | | |
|--|--------------|--|---|
| <p>Simultaneous approach authorized with Rwy 30L.</p> | <p>MALSF</p> | <p>MISSED APPROACH: Climb to 1300 then climbing right turn to 4000 via heading 040° and GEP VORTAC R-085 to WHISK INT/GEF 17.5 DME and hold.</p> | |
| | | <p>ATIS ARR 135.35 239.275 DEP 120.8</p> | <p>MINNEAPOLIS APP CON 119.3 335.5</p> |



| CATEGORY | A | B | C | D | E |
|--------------|---------------------|-------------|-------------------------|-------------------------|-------------------------|
| S-ILS 30R | 1073/40 250 (300-¾) | | | | |
| S-LOC 30R | 1500/50 | 677 (700-1) | 1500-2 677 (700-2) | 1500-2¼ 677 (700-2¼) | 1500-2½ 677 (700-2½) |
| CIRCLING | 1500-1 | 659 (700-1) | 1500-2 659 (700-2) | 1500-2¼ 659 (700-2¼) | 1660-3 819 (900-3) |
| DME MINIMUMS | | | | | |
| S-LOC 30R | 1340/50 | 517 (500-1) | 1340-1½ 517 (500-1½) | 1340-1¾ 517 (500-1¾) | 517 (500-1¾) |
| CIRCLING | 1360-1 | 519 (600-1) | 1360-1½ 519 (600-1½) | 1460-2 619 (700-2) | 1660-3 819 (900-3) |

NC-1, 07 FEB 2013 to 07 MAR 2013

NC-1, 07 FEB 2013 to 07 MAR 2013