

LOC/DME I-HKZ 110.3 Chan 40	APP CRS 120°	Rwy Idg TDZE Apt Elev	10000 841 841
---	------------------------	-----------------------------	--

ILS or LOC RWY 12R

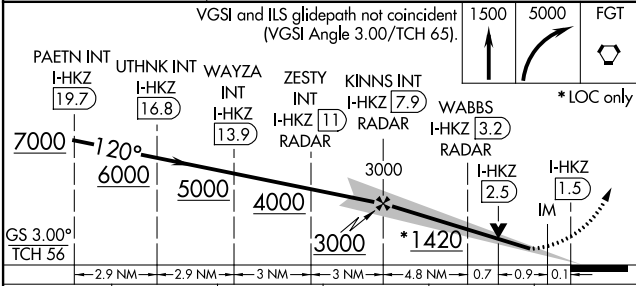
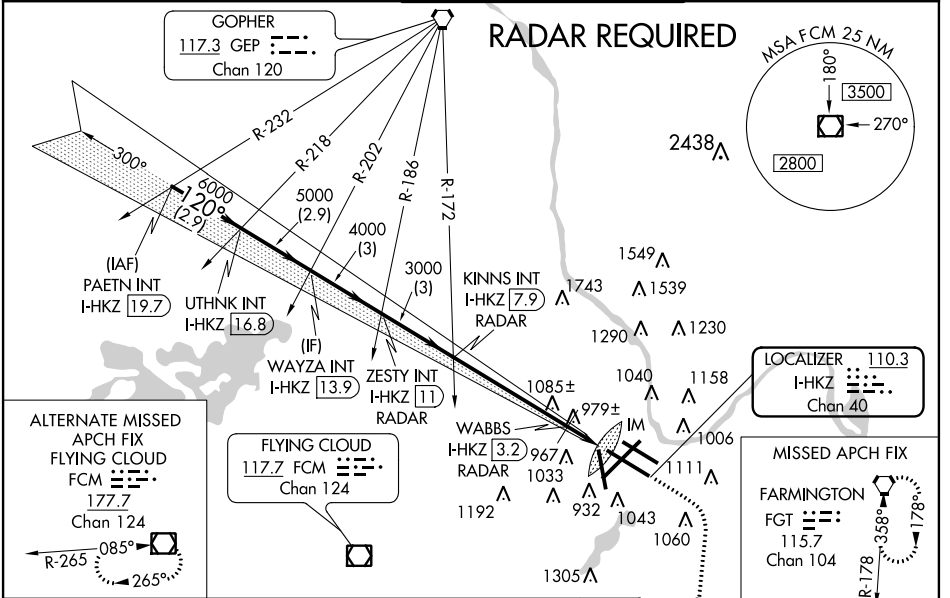
MINNEAPOLIS-ST PAUL INTL/WOLD-CHAMBERLAIN (MSP)

▼ For inop ALSF, increase S-ILS 12R Cat E visibility to RVR 4000 and S-LOC 12R Cat E visibility to 2. WABBS fix minimums: For inop ALSF, increase S-LOC 12R Cat E visibility to 1½. Simultaneous approach authorized with Rwy 12L.

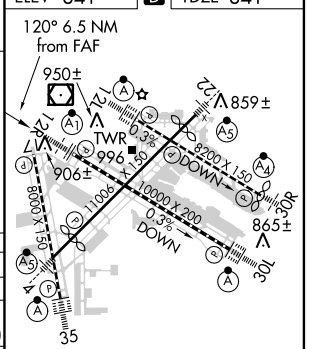
▲ ALSF-1

MISSED APPROACH: Climb to 1500 then climbing right turn to 5000 direct FGT VORTAC and hold, continue climb-in-hold to 5000.

ATIS ARR 135.35 239.275 DEP 120.8	MINNEAPOLIS APP CON 119.3 335.5	MINNEAPOLIS TOWER 123.95 273.55 (12L-30R) 126.7 273.55 (12R-30L, 4-22) 123.675 273.55 (17-35)	GND CON N 121.8 348.6 S 121.9 348.6 W 127.925	CLNC DEL 133.2
---	---	---	---	--------------------------



ELEV 841	TDZE 841
----------	----------



CATEGORY	A	B	C	D	E
S-ILS 12R	1041/18 200 (200-½)				
S-LOC 12R	1420/24	579 (600-½)	1420/50 579 (600-1)	1420/60 579 (600-1¼)	1420-1½ 579 (600-1½)
CIRCLING	1420-1	579 (600-1)	1420-1½ 579 (600-1½)	1460-2 619 (700-2)	1660-3 819 (900-3)
WABBS FIX MINIMUMS					
S-LOC 12R	1240/24 399 (400-½)		1240/40 399 (400-¾)		1240/50 399 (400-1)
CIRCLING	1360-1	519 (600-1)	1360-1½ 519 (600-1½)	1460-2 619 (700-2)	1660-3 819 (900-3)

HIRL all Rwys					
REIL Rwys 17 and 30R					
TDZ/CL Rwys 12L, 12R, 30L, and 35					
FAF to MAP 6.5 NM					
Knots	60	90	120	150	180
Min:Sec	6:30	4:20	3:15	2:36	2:10

NC-1, 07 FEB 2013 to 07 MAR 2013

NC-1, 07 FEB 2013 to 07 MAR 2013