

LOC/DME I-PJL 110.7 Chan 44	APP CRS 120°	Rwy Idg TDZE Apt Elev	7620 839 841
------------------------------------------	------------------------	-----------------------------	-----------------------------------------

ILS or LOC RWY 12L

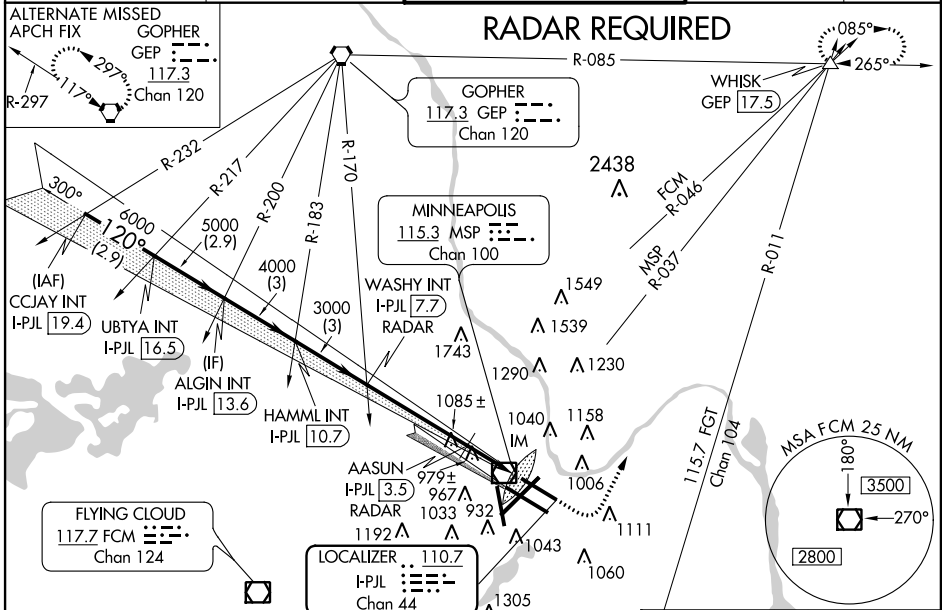
MINNEAPOLIS-ST PAUL INTL/WOLD-CHAMBERLAIN (MSP)

⚠ For inop ALSF, increase S-ILS 12L Cat E visibility to RVR 4000 and S-LOC 12L Cat E visibility to 2½ mile. For inop ALSF when using AASUN fix minimums, increase S-LOC Cat E visibility to 1½ mile. Simultaneous approach authorized with Rwy 12R.

ⓘ ALSF-2

⚠ MISSED APPROACH: Climb to 1500, then climbing left turn to 4000 via heading 350° and FCM VOR/DME R-046 to WHISK INT/ GEP 17.5 DME and hold.

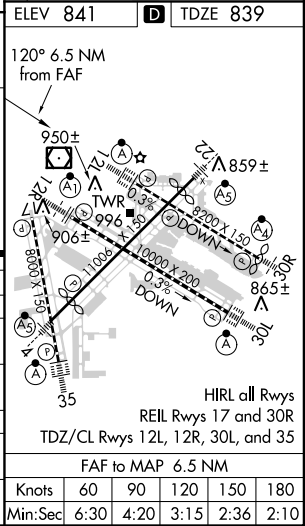
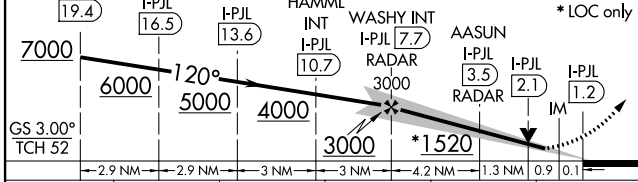
ATIS ARR 135.35 239.275 DEP 120.8	MINNEAPOLIS APP CON 119.3 335.5	MINNEAPOLIS TOWER 123.95 273.55 (12L-30R) 126.7 273.55 (12R-30L, 4-22) 123.675 273.55 (17-35)	GND CON N 121.8 348.6 S 121.9 348.6 W 127.925	CLNC DEL 133.2
-------------------------------------------------------	-------------------------------------------	-----------------------------------------------------------------------------------------------------------------------------	-----------------------------------------------------------------------------	--------------------------



NC-1, 07 FEB 2013 to 07 MAR 2013

NC-1, 07 FEB 2013 to 07 MAR 2013

VGSI and ILS glidepath not coincident (VGSI Angle 3.00/TCH 75).	ELEV 841	TDZE 839
CCJAY INT I-PJL 19.4	UBTYA INT I-PJL 16.5	ALGIN INT I-PJL 13.6
HAMML INT I-PJL 10.7	WASHY INT I-PJL 7.7	AASUN I-PJL 3.5
IM	FCM R-046	WHISK



CATEGORY	A	B	C	D	E
S-ILS 12L	1039/18 200 (200-½)				
S-LOC 12L	1520/24	681 (700-½)	1520-1½ 681 (700-1½)	1520-1¾ 681 (700-1¾)	1520-2 681 (700-2)
CIRCLING	1520-1	679 (700-1)	1520-2 679 (700-2)	1520-2¼ 679 (700-2¼)	1660-3 819 (900-3)
AASUN FIX MINIMUMS					
S-LOC 12L	1240/24	401 (400-½)	1240/40	401 (400-¾)	1240/50 401 (400-1)
CIRCLING	1360-1	519 (600-1)	1360-1½ 519 (600-1½)	1460-2 619 (700-2)	1660-3 819 (900-3)

ILS or LOC RWY 12L