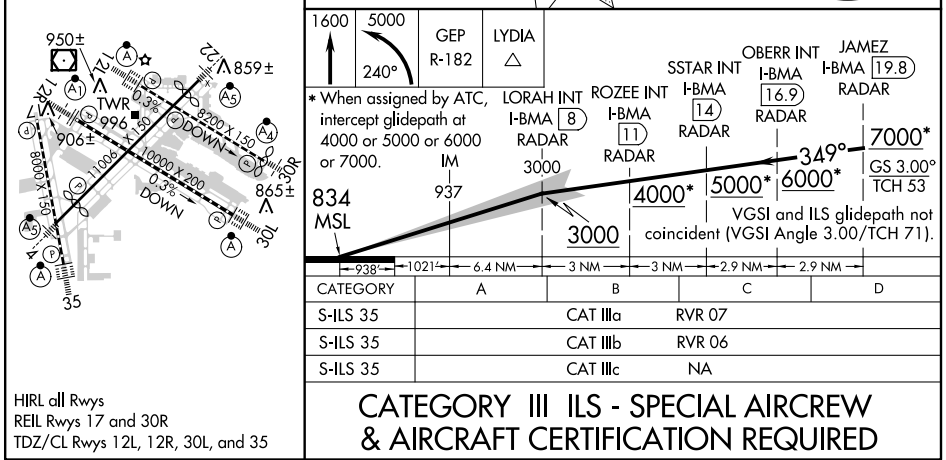
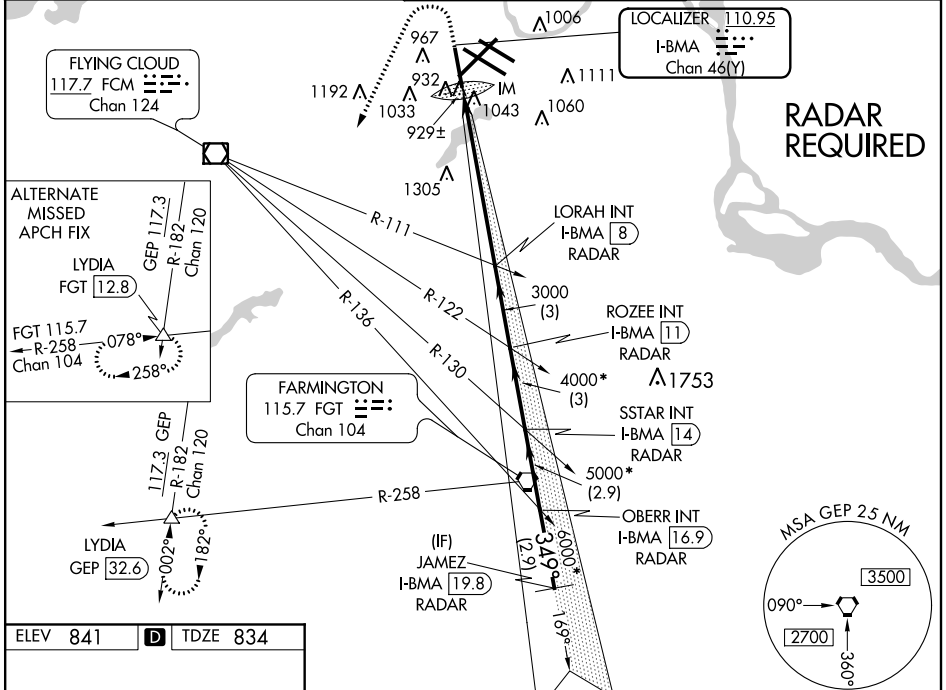


LOC/DME I-BMA 110.95 Chan 46 (Y)	APP CRS 349°	Rwy Idg TDZE Apt Elev	8000 834 841
---	------------------------	-----------------------------	---

ILS RWY 35 (CAT III)
MINNEAPOLIS-ST PAUL INTL/WOLD-CHAMBERLAIN (MSP)

ATIS ARR 135.35 239.275 DEP 120.8	MINNEAPOLIS APP CON 119.3 335.5	MINNEAPOLIS TOWER 123.95 273.55 (12L-30R) 126.7 273.55 (12R-30L, 4-22) 123.675 273.55 (17-35)	GND CON N 121.8 348.6 S 121.9 348.6 W 127.925	CLNC DEL 133.2
		ALSIF-2 	MISSED APPROACH: Climb to 1600 then climbing left turn to 5000 via heading 240° and GEP R-182 to LYDIA INT/ GEP 32.6 DME and hold.	



HIRL all Rwys
REIL Rwys 17 and 30R
TDZ/CL Rwys 12L, 12R, 30L, and 35

NC-1, 07 FEB 2013 to 07 MAR 2013

NC-1, 07 FEB 2013 to 07 MAR 2013