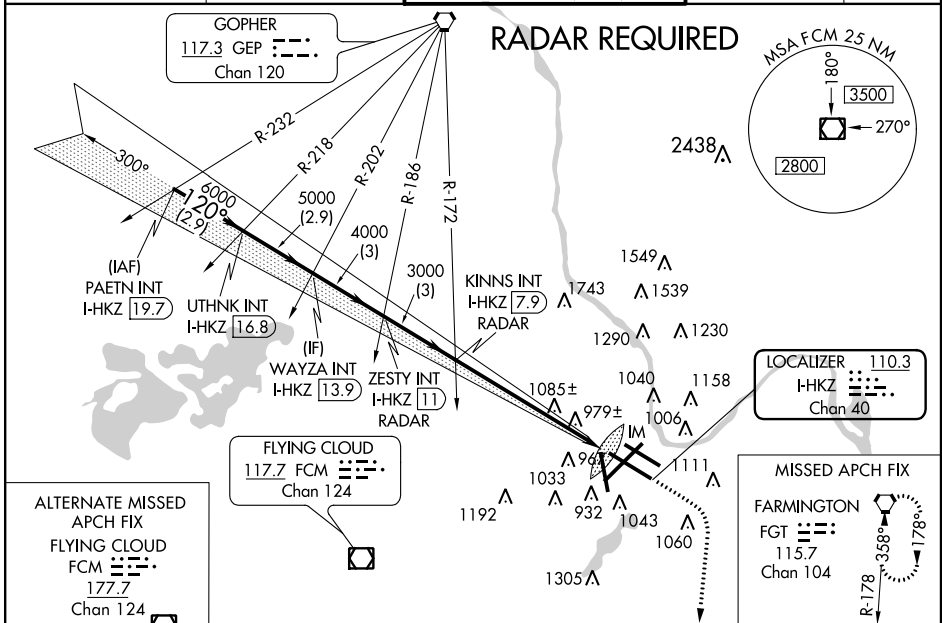


LOC/DME I-HKZ 110.3 Chan 40	APP CRS 120°	Rwy Idg 10000 TDZE 841 Apt Elev 841
---	------------------------	--

ILS RWY 12R (CAT III)
MINNEAPOLIS-ST PAUL INTL/WOLD-CHAMBERLAIN (MSP)

<p>Simultaneous approach authorized with Rwy 12L.</p>	<p>ALSIF-1</p>	<p>MISSED APPROACH: Climb to 1500 then climbing right turn to 5000 direct FGT VORTAC and hold, continue climb-in-hold to 5000.</p>

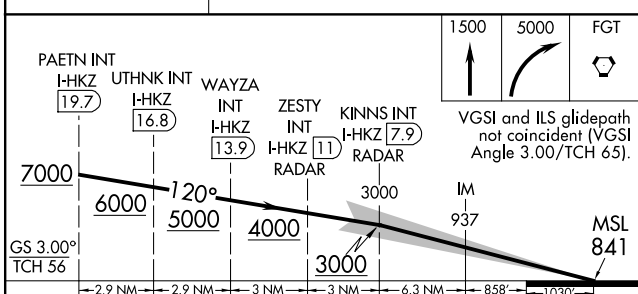
<p>ATIS ARR 135.35 239.275 DEP 120.8</p>	<p>MINNEAPOLIS APP CON 119.3 335.5</p>	<p>MINNEAPOLIS TOWER 123.95 273.55 (12L-30R) 126.7 273.55 (12R-30L, 4-22) 123.675 273.55 (17-35)</p>	<p>GND CON N 121.8 348.6 S 121.9 348.6 W 127.925</p>	<p>CLNC DEL 133.2</p>
--	---	---	---	----------------------------------



ALTERNATE MISSED APCH FIX

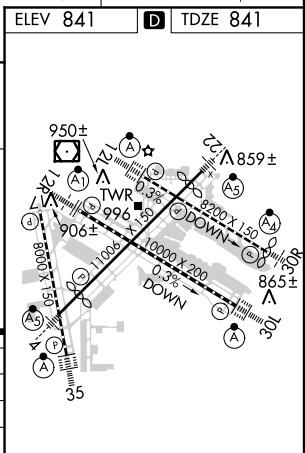
FLYING CLOUD FCM 177.7 Chan 124

R-265 085°



CATEGORY	A	B	C	D
S-ILS 12R		CAT IIIa	RVR 07	
S-ILS 12R		CAT IIIb	NA	
S-ILS 12R		CAT IIIc	NA	

CATEGORY III ILS - SPECIAL AIRCREW & AIRCRAFT CERTIFICATION REQUIRED



HIRL all Rwys
REIL Rwy 17 and 30R
TDZ/CL Rwy 12L, 12R, 30L, and 35

NC-1, 07 FEB 2013 to 07 MAR 2013

NC-1, 07 FEB 2013 to 07 MAR 2013