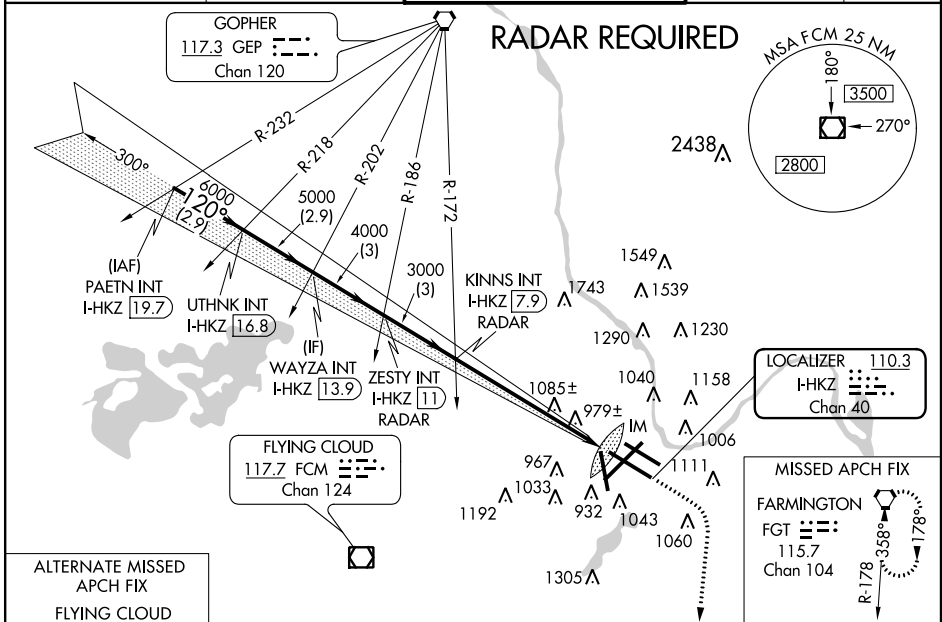


| | | |
|---|------------------------|--|
| LOC/DME I-HKZ 110.3 Chan 40 | APP CRS 120° | Rwy Idg 10000 TDZE 841 Apt Elev 841 |
|---|------------------------|--|

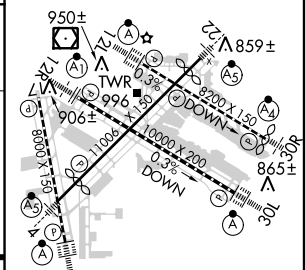
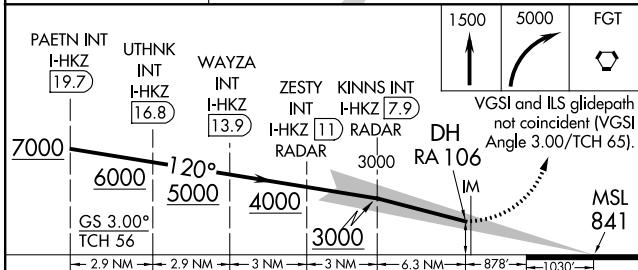
ILS RWY 12R (CAT II)
MINNEAPOLIS-ST PAUL INTL/WOLD-CHAMBERLAIN (MSP)

| | | |
|---|---------------|--|
| <p>Simultaneous approach authorized with Rwy 12L.</p> | <p>ALSF-1</p> | <p>MISSED APPROACH: Climb to 1500 then climbing right turn to 5000 direct FGT VORTAC and hold, continue climb-in-hold to 5000.</p> |
| | | |

| | | | | |
|--|---|---|---|----------------------------------|
| <p>ATIS ARR 135.35 239.275 DEP 120.8</p> | <p>MINNEAPOLIS APP CON 119.3 335.5</p> | <p>MINNEAPOLIS TOWER 123.95 273.55 (12L-30R) 126.7 273.55 (12R-30L, 4-22) 123.675 273.55 (17-35)</p> | <p>GND CON N 121.8 348.6 S 121.9 348.6 W 127.925</p> | <p>CLNC DEL 133.2</p> |
|--|---|---|---|----------------------------------|



| | |
|-----------------|--------------------------|
| ELEV 841 | D TDZE 841 |
|-----------------|--------------------------|



| | | | | |
|-----------|----------------------|---|---|---|
| CATEGORY | A | B | C | D |
| S-ILS 12R | RA 106/12 100 DA 941 | | | |

CATEGORY II ILS - SPECIAL AIRCREW & AIRCRAFT CERTIFICATION REQUIRED

HIRL all Rwys
REIL Rwy 17 and 30R
TDZ/CL Rwy 12L, 12R, 30L, and 35

ILS RWY 12R (CAT II)

NC-1, 07 FEB 2013 to 07 MAR 2013

NC-1, 07 FEB 2013 to 07 MAR 2013