

(HSTIN2.HSTIN) 12320

MINNEAPOLIS-ST. PAUL INTL/WOLD-CHAMBERLAIN (MSP)

HESTIN TWO DEPARTURE (RNAV)

SL-264 (FAA)

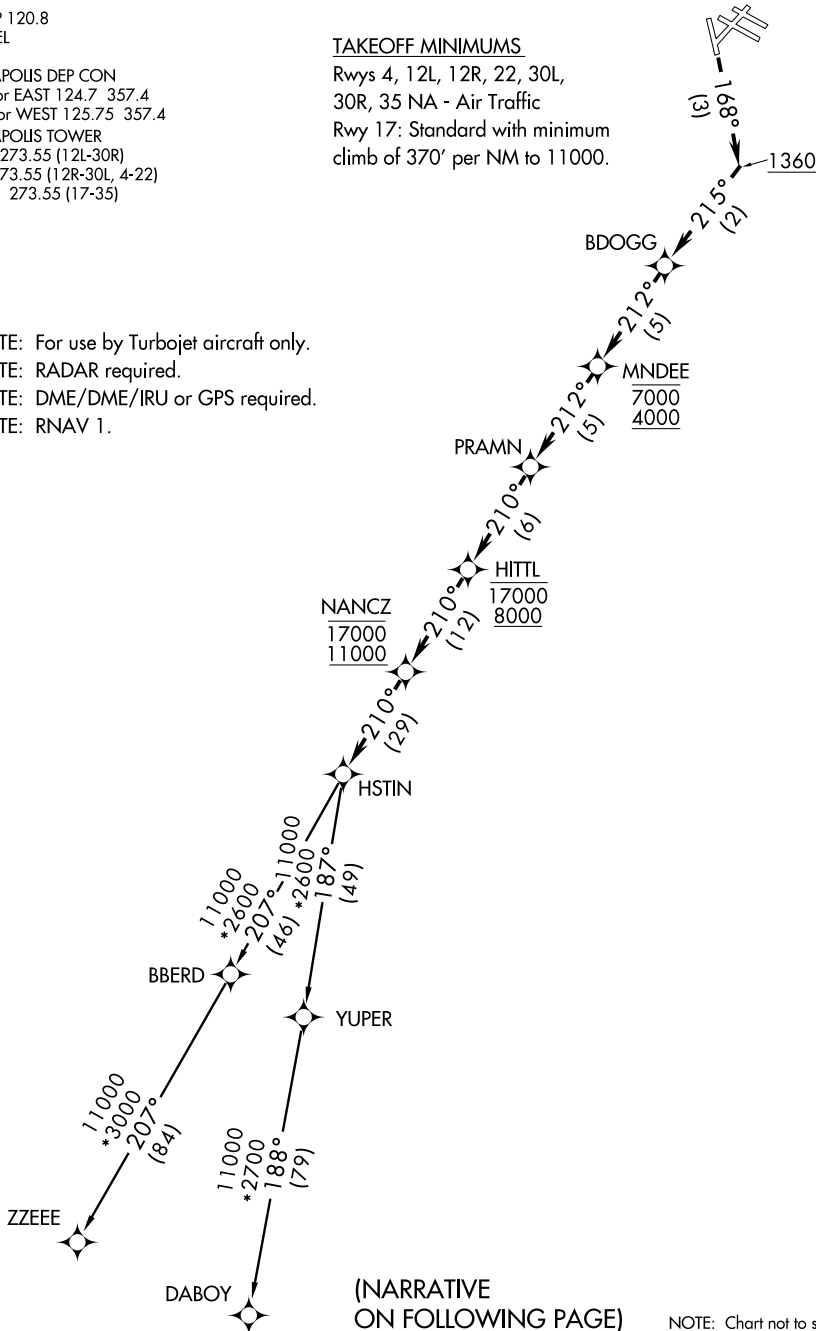
MINNEAPOLIS, MINNESOTA

ATIS DEP 120.8
 CLNC DEL
 133.2
 MINNEAPOLIS DEP CON
 SOUTH or EAST 124.7 357.4
 NORTH or WEST 125.75 357.4
 MINNEAPOLIS TOWER
 123.95 273.55 (12L-30R)
 126.7 273.55 (12R-30L, 4-22)
 123.675 273.55 (17-35)

TAKEOFF MINIMUMS

Rwy 4, 12L, 12R, 22, 30L,
 30R, 35 NA - Air Traffic
 Rwy 17: Standard with minimum
 climb of 370' per NM to 11000.

- NOTE: For use by Turbojet aircraft only.
- NOTE: RADAR required.
- NOTE: DME/DME/IRU or GPS required.
- NOTE: RNAV 1.



(NARRATIVE ON FOLLOWING PAGE)

NOTE: Chart not to scale.

NC-1, 07 FEB 2013 to 07 MAR 2013

NC-1, 07 FEB 2013 to 07 MAR 2013

HESTIN TWO DEPARTURE (RNAV)

(HSTIN2.HSTIN) 12320

MINNEAPOLIS, MINNESOTA

MINNEAPOLIS-ST. PAUL INTL/WOLD-CHAMBERLAIN (MSP)