

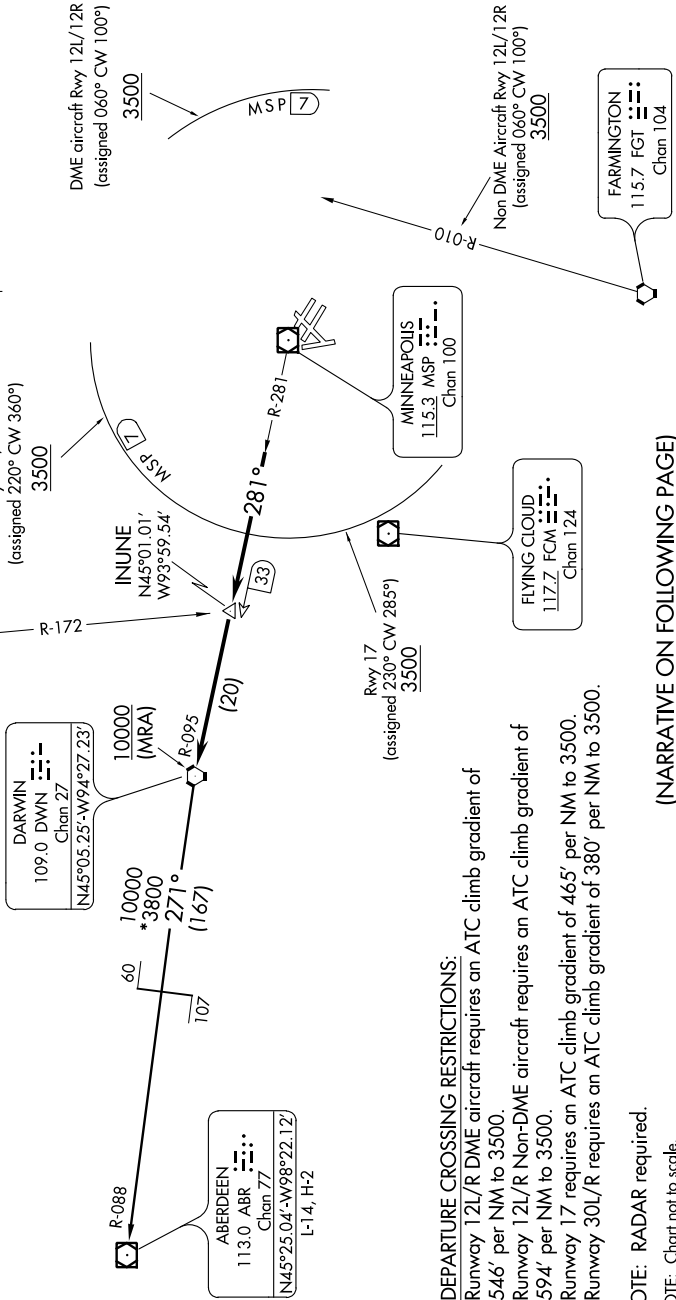
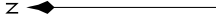
DARWIN FOUR DEPARTURE

NC-1, 07 FEB 2013 to 07 MAR 2013

TAKE-OFF MINIMUMS

- Rwy 4, 12L, 12R, 17, 22: Standard.
- Rwy 35: Standard with minimum climb of 210' per NM to 2100.
- Rwy 30L: Standard with minimum climb of 210' per NM to 2100.
- Rwy 30R: Standard with minimum climb of 220' per NM to 2100.

ATIS DEP 120.8
CLNC DEL 133.2
MINNEAPOLIS TOWER
123.95 273.55 (12L-30R)
126.7 273.55 (12R-30L, 4-22)
123.675 273.55 (17-35)
MINNEAPOLIS DEP CON
SOUTH or EAST 124.7 357.4
NORTH or WEST 125.75 357.4



DEPARTURE CROSSING RESTRICTIONS:

- Runway 12L/R DME aircraft requires an ATC climb gradient of 546' per NM to 3500.
- Runway 12L/R Non-DME aircraft requires an ATC climb gradient of 594' per NM to 3500.
- Runway 17 requires an ATC climb gradient of 465' per NM to 3500.
- Runway 30L/R requires an ATC climb gradient of 380' per NM to 3500.

NOTE: RADAR required.
NOTE: Chart not to scale.

(NARRATIVE ON FOLLOWING PAGE)