

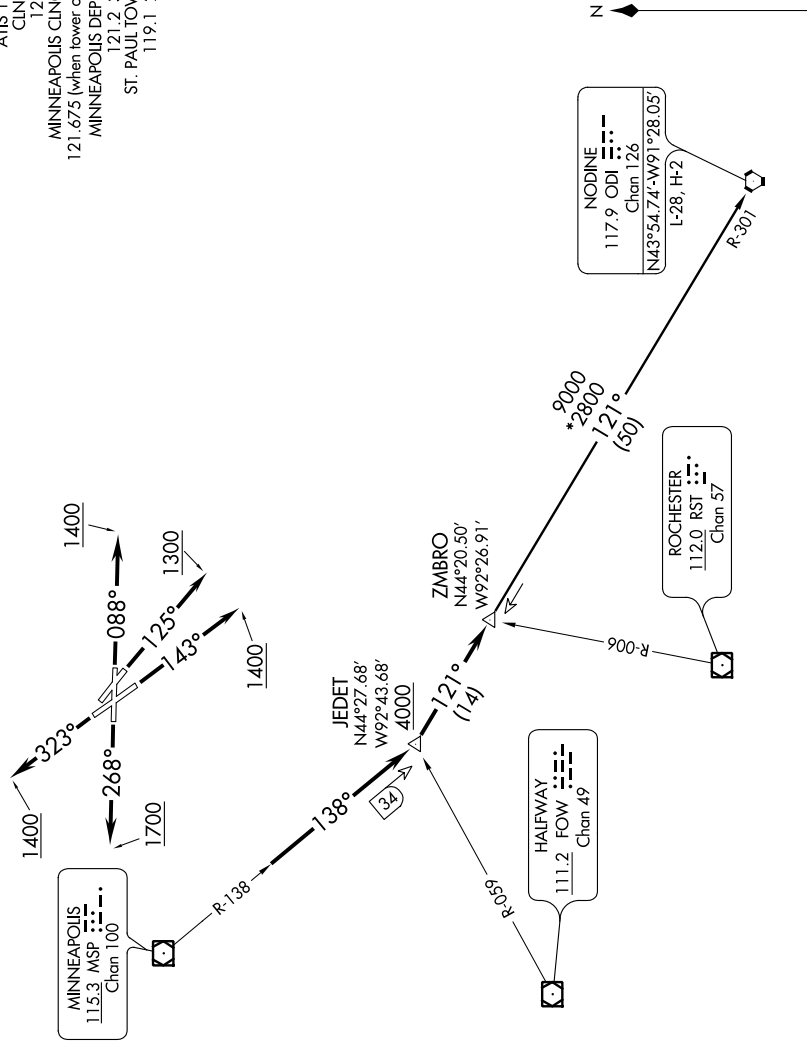
ZMBRO FOUR DEPARTURE
(ZMBRO4.ZMBRO) 11349

ST. PAUL DOWNTOWN HOLMAN FIELD (STP)
ST. PAUL, MINNESOTA

SL-263 (FAA)

ATIS 118.35
CLNC DEL 121.675
MINNEAPOLIS CLNC DEL 121.675
MINNEAPOLIS DEP CON 121.2 357.4
ST. PAUL TOWER* 119.1 257.8

NC-1, 07 FEB 2013 to 07 MAR 2013



NOTE: Chart not to scale.

NOTE: RADAR Required
(NARRATIVE ON FOLLOWING PAGE)

TAKEOFF MINIMUMS
Rwy 31: NA - Obstacles.
Rwy 14: Standard.
Rwy 9: Standard with minimum climb of 340' per NM to 1300.
Rwy 13: Standard with minimum climb of 230' per NM to 1500.
Rwy 27: Standard with minimum climb of 442' per NM to 1500.
Rwy 32: Standard with minimum climb of 340' per NM to 3000.

NC-1, 07 FEB 2013 to 07 MAR 2013

ZMBRO FOUR DEPARTURE
(ZMBRO4.ZMBRO) 11349

ST. PAUL, MINNESOTA
ST. PAUL DOWNTOWN HOLMAN FIELD (STP)