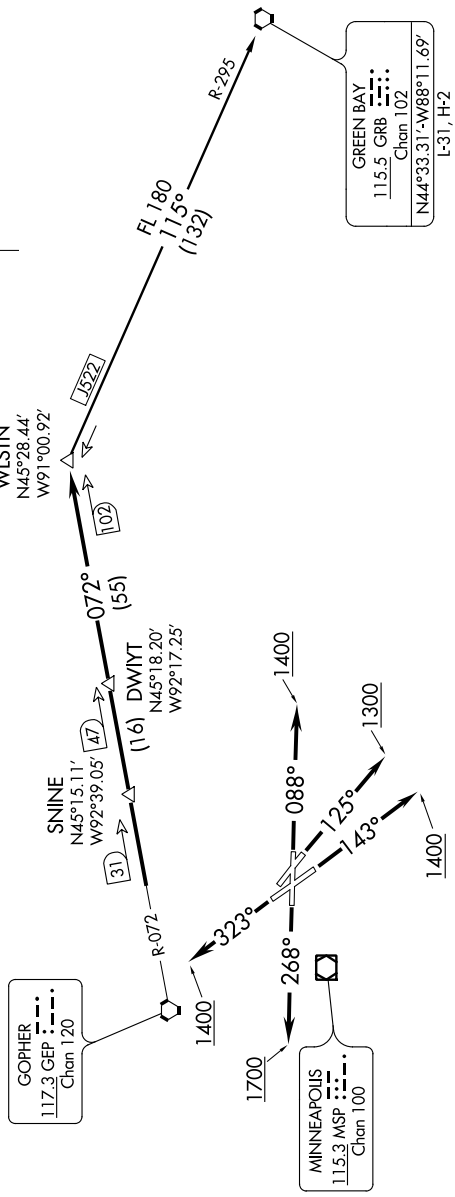


WLSTN FOUR DEPARTURE

NC-1, 07 FEB 2013 to 07 MAR 2013

TAKEOFF MINIMUMS
Rwy 31: NA-obstacles.
Rwy 14: Standard.
Rwy 9: Standard with minimum climb of 340' per NM to 1300.
Rwy 13: Standard with minimum climb of 230' per NM to 1500.
Rwy 27: 600-2 or standard with minimum climb of 442' per NM to 1500.
Rwy 32: Standard with minimum climb of 340' per NM to 3000.

ATIS 118.35
CLNC DEL
121.675
MINNEAPOLIS CLNC DEL
121.675 (when lower closed)
MINNEAPOLIS DEP CON
121.2 357.4
ST. PAUL TOWER ★
119.1 257.8



(NARRATIVE ON FOLLOWING PAGE)

NOTE: RADAR and DME required.
NOTE: Chart not to scale.