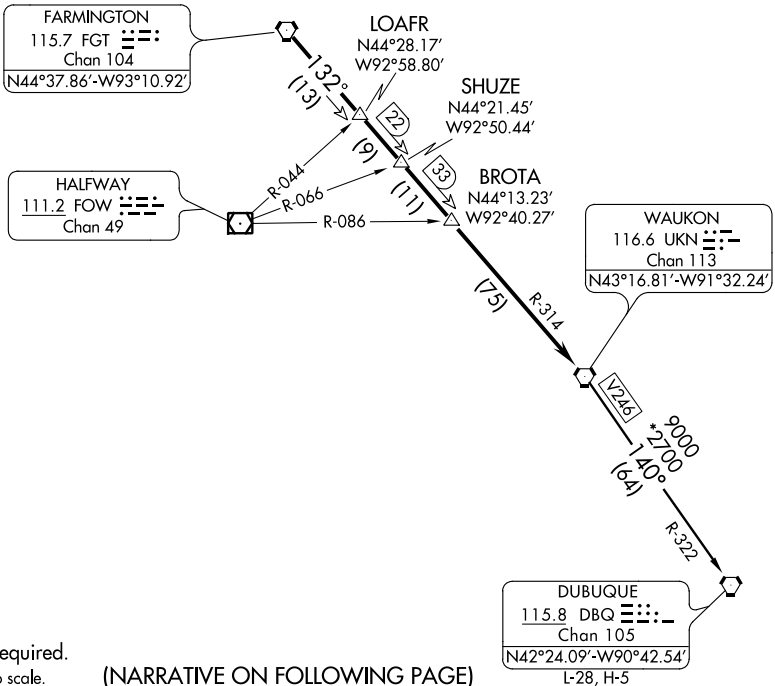
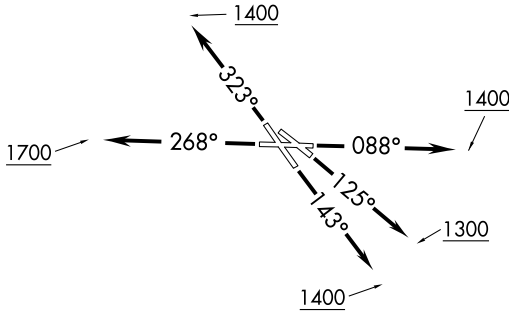


WAUKON FOUR DEPARTURE

TAKE-OFF MINIMUMS

- Rwy 9: Standard with minimum climb of 340' per NM to 1300.
- Rwy 13: Standard with minimum climb of 230' per NM to 1500.
- Rwy 14: Standard.
- Rwy 27: 600-2 or Standard with minimum climb of 442' per NM to 1500.
- Rwy 31: NA - Obstacles.
- Rwy 32: Standard with minimum climb of 340' per NM to 3000.

ATIS 118.35
CLNC DEL 121.675
MINNEAPOLIS CLNC DEL 121.675 (when tower closed)
MINNEAPOLIS DEP CON 121.2 357.4
ST. PAUL TOWER* 119.1 (CTAF) 257.8



NOTE: RADAR required.

NOTE: Chart not to scale.

(NARRATIVE ON FOLLOWING PAGE)

WAUKON FOUR DEPARTURE

NC-1, 07 FEB 2013 to 07 MAR 2013

NC-1, 07 FEB 2013 to 07 MAR 2013