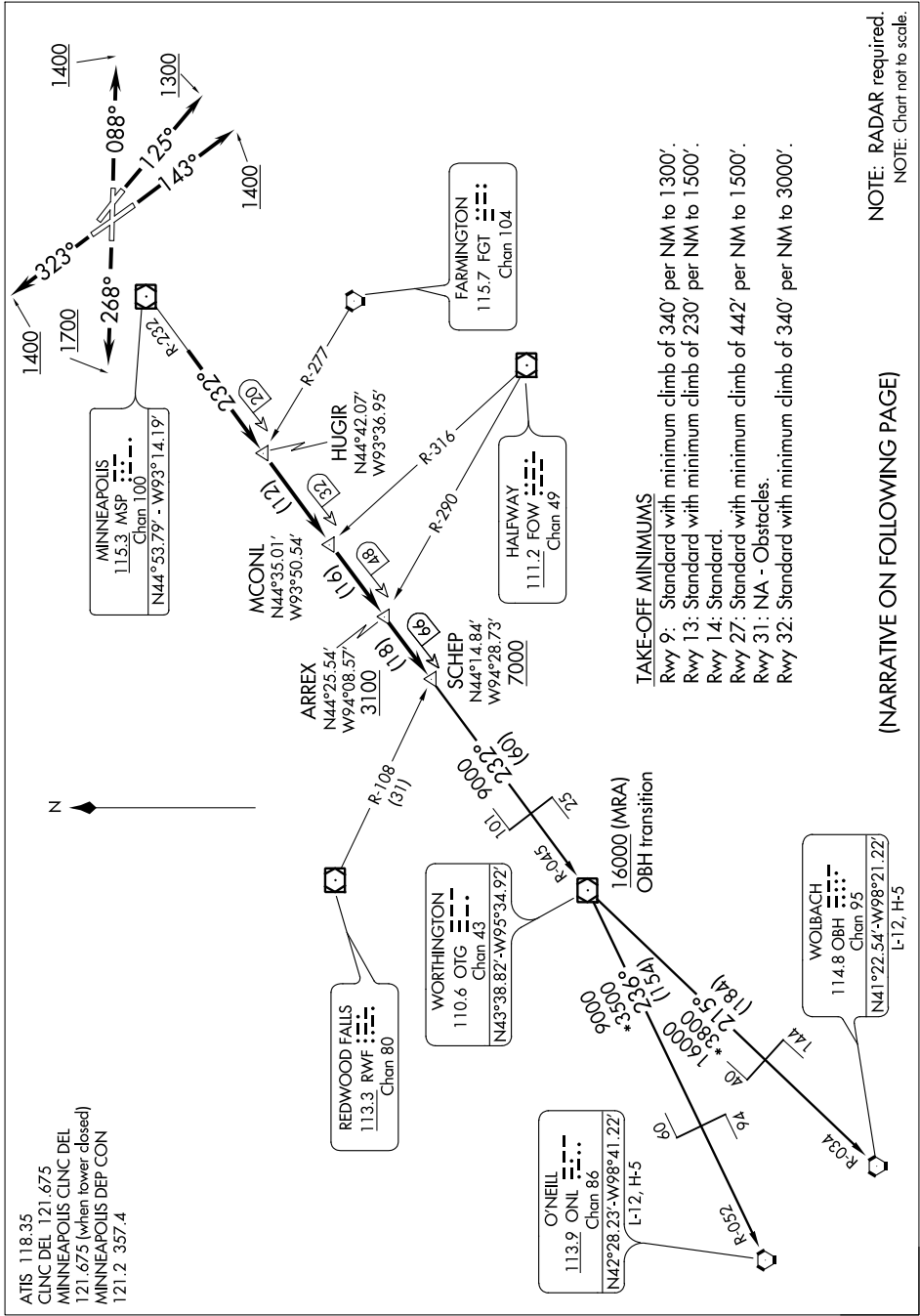


SCHEP FIVE DEPARTURE

NC-1, 07 FEB 2013 to 07 MAR 2013



ATIS 118.35
 CLNC DEL 121.675
 MINNEAPOLIS CLNC DEL
 121.675 (when tower closed)
 MINNEAPOLIS DEP CON
 121.2 357.4

TAKE-OFF MINIMUMS
 Rwy 9: Standard with minimum climb of 340' per NM to 1300'.
 Rwy 13: Standard with minimum climb of 230' per NM to 1500'.
 Rwy 14: Standard.
 Rwy 27: Standard with minimum climb of 442' per NM to 1500'.
 Rwy 31: NA - Obstacles.
 Rwy 32: Standard with minimum climb of 340' per NM to 3000'.

NOTE: RADAR required.
 NOTE: Chart not to scale.

(NARRATIVE ON FOLLOWING PAGE)

NC-1, 07 FEB 2013 to 07 MAR 2013