


WAAS CH 62828 W14A	APP CRS 143°	Rwy Idg THRE 705 Apt Elev 705	6148
--	------------------------	---	-------------

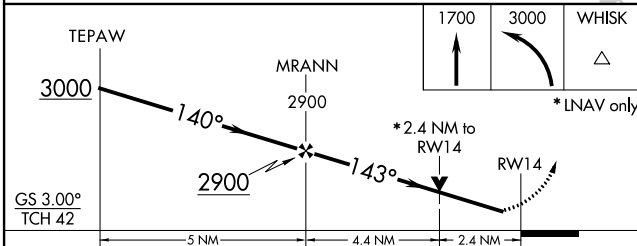
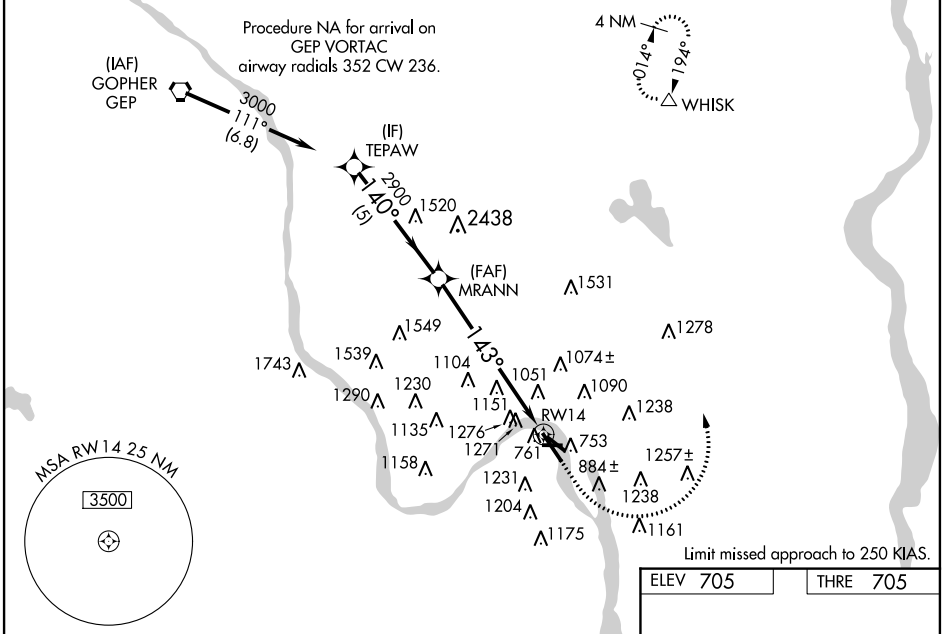
RNAV (GPS) RWY 14

ST. PAUL DOWNTOWN HOLMAN FIELD (STP)

⚠ When local altimeter setting not received, use South St Paul Muni-Richard E Fleming field altimeter setting. Circling to Rwy 9 NA at night. For uncompensated Baro-VNAV systems, LNAV/VNAV NA below -16°C (4°F) or above 39°C (102°F). DME/DME RNP-0.3 NA. Visibility reduction by helicopters NA. When VGSi inop, Circling Rwy 13 NA at night. For inop MALS, increase LPV all Cats visibility to RVR 4500, LNAV/VNAV all Cats visibility to 2½ mile, and LNAV Cat A visibility to RVR 5000, Cats C and D to 2½ mile. Baro-VNAV and VDP NA when using South St Paul Muni-Richard E Fleming field altimeter setting.

MALS
 MISSED APPROACH: Climb to 1700 then climbing left turn to 3000 direct WHISK and hold.

ATIS 118.35	MINNEAPOLIS APP CON 121.2 357.4	ST. PAUL TOWER * 119.1(CTAF) 257.8	GND CON 121.675	CLNC DEL 121.675	MINNEAPOLIS CLNC DEL 121.675 (when tower closed)	UNICOM 122.95
-----------------------	---	--	---------------------------	----------------------------	---	-------------------------



ELEV 705	THRE 705
----------	----------

143° to RWY 14

753, 727±, 400A X 150, 3642 X 100, 6491 X 150

TWR

HIRL Rwy 13-31
 HIRL Rwy 14-32
 MIRL Rwy 9-27
 REIL Rwy 31 and 32

CATEGORY	A	B	C	D
LPV DA		955/40	250 (300-¾)	
LNAV/VNAV DA		1502-2½	797 (800-2½)	
LNAV MDA	1520/40	815 (900-¾)	1520-1⅞	815 (900-1⅞)
CIRCLING	1580-1¼	875 (900-1¼)	1580-2½ 875 (900-2½)	1580-2¾ 875 (900-2¾)

NC-1, 07 FEB 2013 to 07 MAR 2013

NC-1, 07 FEB 2013 to 07 MAR 2013