

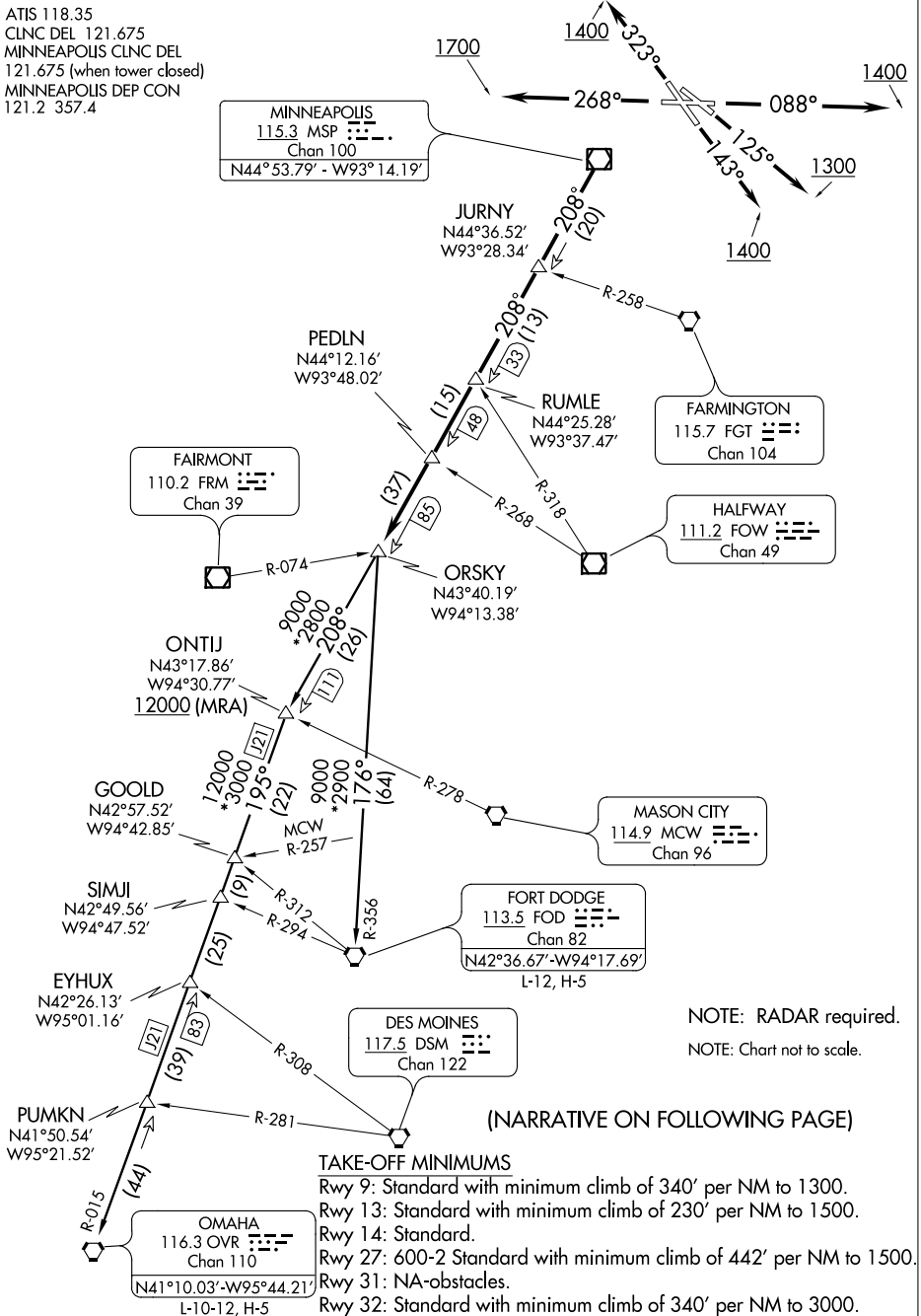
ORSKY FIVE DEPARTURE

ST. PAUL DOWNTOWN HOLMAN FIELD (STP)
SL-263 (FAA) ST. PAUL, MINNESOTA

ATIS 118.35
CLNC DEL 121.675
MINNEAPOLIS CLNC DEL
121.675 (when tower closed)
MINNEAPOLIS DEP CON
121.2 357.4

NC-1, 07 FEB 2013 to 07 MAR 2013

NC-1, 07 FEB 2013 to 07 MAR 2013



MINNEAPOLIS
115.3 MSP
Chan 100
N44°53.79' - W93°14.19'

FAIRMONT
110.2 FRM
Chan 39

FARMINGTON
115.7 FGT
Chan 104

HALFWAY
111.2 FOW
Chan 49

ORSKY
N43°40.19'
W94°13.38'

ONTIJ
N43°17.86'
W94°30.77'
12000 (MRA)

MASON CITY
114.9 MCW
Chan 96

FORT DODGE
113.5 FOD
Chan 82
N42°36.67'-W94°17.69'
L-12, H-5

DES MOINES
117.5 DSM
Chan 122

NOTE: RADAR required.
NOTE: Chart not to scale.

(NARRATIVE ON FOLLOWING PAGE)

TAKE-OFF MINIMUMS

- Rwy 9: Standard with minimum climb of 340' per NM to 1300.
- Rwy 13: Standard with minimum climb of 230' per NM to 1500.
- Rwy 14: Standard.
- Rwy 27: 600-2 Standard with minimum climb of 442' per NM to 1500.
- Rwy 31: NA-obstacles.
- Rwy 32: Standard with minimum climb of 340' per NM to 3000.