

LOC/DME I-BAO 111.5 Chan 52	APP CRS 323°	Rwy Idg TDZE Apt Elev	6109 704 705
--	------------------------	-----------------------------	---

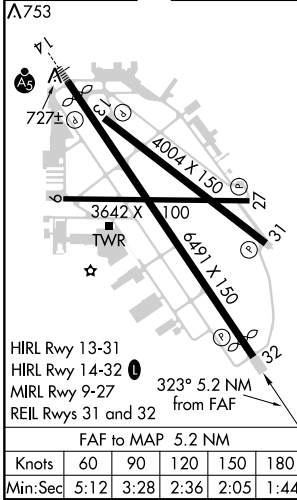
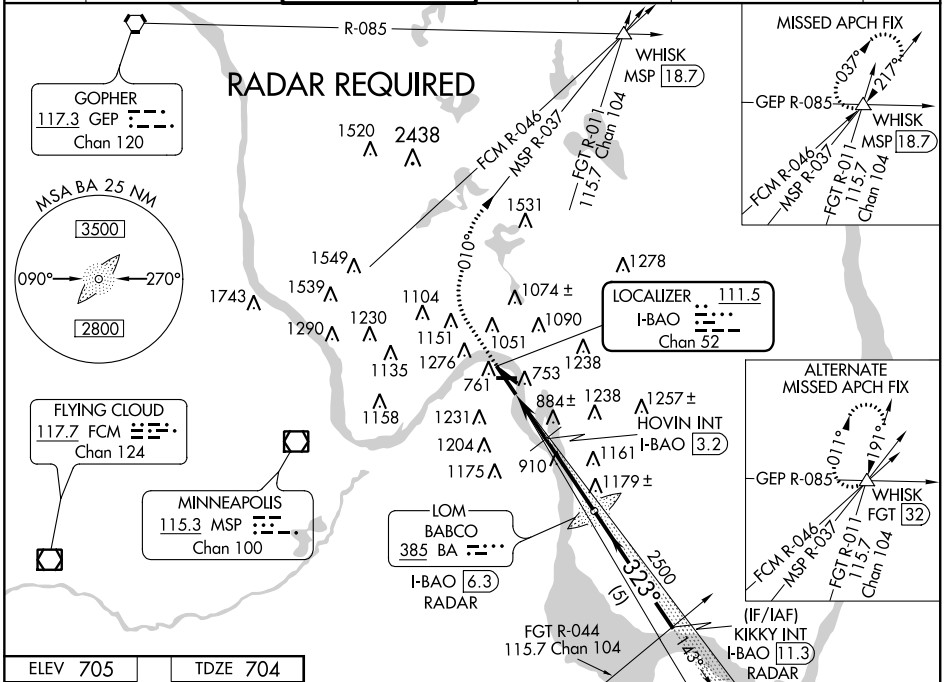
ILS or LOC RWY 32

ST. PAUL DOWNTOWN HOLMAN FIELD (STP)

Visibility reduction by helicopters NA. When local altimeter setting not received, use South St. Paul Muni altimeter setting. Radar or DME required.

MISSED APPROACH: Climb to 1200 then climbing right turn to 4000 via heading 010° and MSP R-037 to WHISK INT/MSP 18.7 DME and hold.

ATIS 118.35	MINNEAPOLIS APP CON 121.2 357.4	ST. PAUL TOWER ★ 119.1(CTAF) 257.8	GND CON 121.675	CLNC DEL 121.675	MINNEAPOLIS CLNC DEL 121.675 (when tower closed)	UNICOM 122.95
-----------------------	---	--	---------------------------	----------------------------	---	-------------------------



ELEV 705	TDZE 704				
↑ 1200	hdg 010°	MSP R-037	WHISK △	BABCO LOM I-BAO [6.3] RADAR	KIKKY INT I-BAO [11.3] RADAR
*LOC only I-BAO [1.1]		HOVIN INT I-BAO [3.2]	2500 → 323° → 2500		
-2.1 NM		3.1 NM	5 NM	GS 3.00° TCH 40	
CATEGORY	A	B	C	D	
S-ILS 32	954/50		250 (300-1)		
S-LOC 32	1440/50	736 (800-1)	1440-2 736 (800-2)	1440-2½ 736 (800-2½)	
CIRCLING	1580-1 875 (900-1)	1580-1¼ 875 (900-1¼)	1580-2½ 875 (900-2½)	1580-2¾ 875 (900-2¾)	
HOVIN FIX MINIMUMS					
S-LOC 32	1280/50	576 (600-1)	1280-1½ 576 (600-1½)	1280-1¾ 576 (600-1¾)	
CIRCLING	1580-1 875 (900-1)	1580-1¼ 875 (900-1¼)	1580-2½ 875 (900-2½)	1580-2¾ 875 (900-2¾)	

NC-1, 07 FEB 2013 to 07 MAR 2013

NC-1, 07 FEB 2013 to 07 MAR 2013