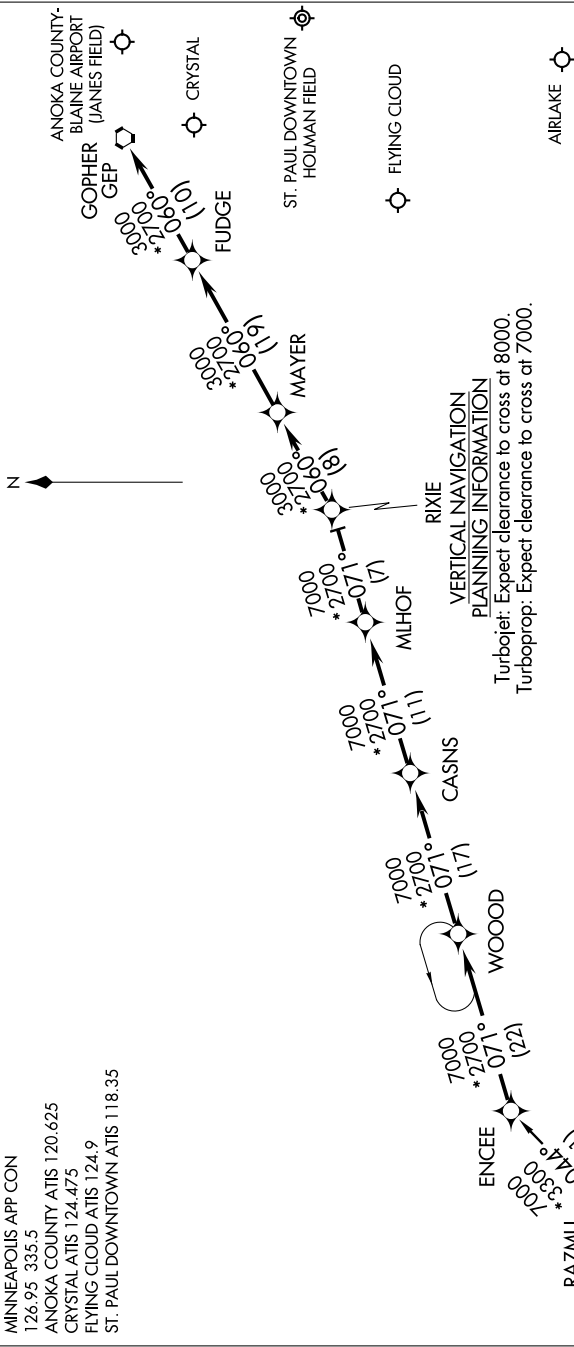


NC-1, 07 FEB 2013 to 07 MAR 2013

MINNEAPOLIS APP CON  
126.95 335.5  
ANOKA COUNTY ATIS 120.625  
CRYSTAL ATIS 124.475  
FLYING CLOUD ATIS 124.9  
ST. PAUL DOWNTOWN ATIS 118.35



NOTE: 1. GPS required.  
2. RNAV 1

NOTE: Chart not to scale.

SIUX FALLS TRANSITION (FSD.ENCEE1)

From over ENCEE WP via 071° track to RIXIE WP, thence via 060° track to GEP VORTAC, thence expect radar vectors to final approach course.

NC-1, 07 FEB 2013 to 07 MAR 2013