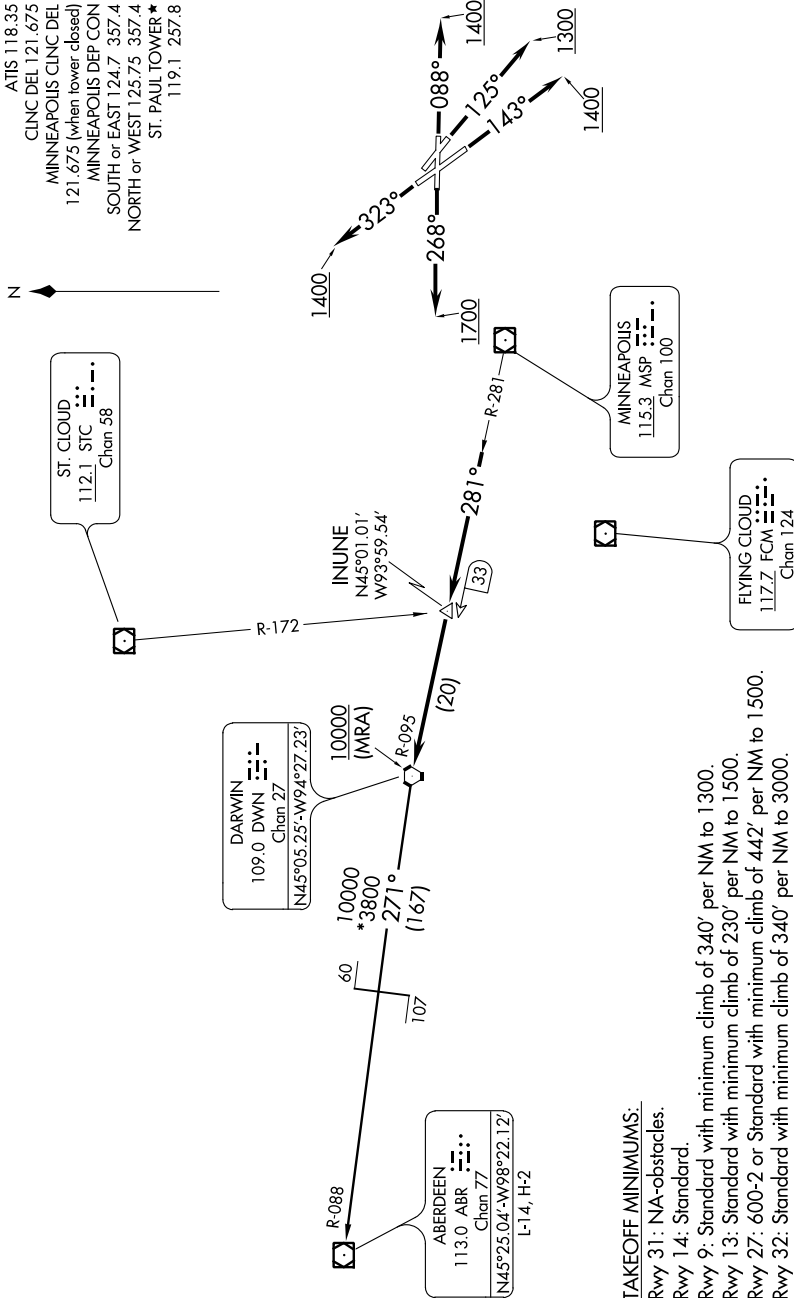


DARWIN FOUR DEPARTURE

NC-1, 07 FEB 2013 to 07 MAR 2013



TAKEOFF MINIMUMS:
 Rwy 31: NA-obstacles.
 Rwy 14: Standard.
 Rwy 9: Standard with minimum climb of 340' per NM to 1300.
 Rwy 13: Standard with minimum climb of 230' per NM to 1500.
 Rwy 27: 600-2 or Standard with minimum climb of 442' per NM to 1500.
 Rwy 32: Standard with minimum climb of 340' per NM to 3000.

NOTE: RADAR required.
 NOTE: Chart not to scale.

(NARRATIVE ON FOLLOWING PAGE)

NC-1, 07 FEB 2013 to 07 MAR 2013