

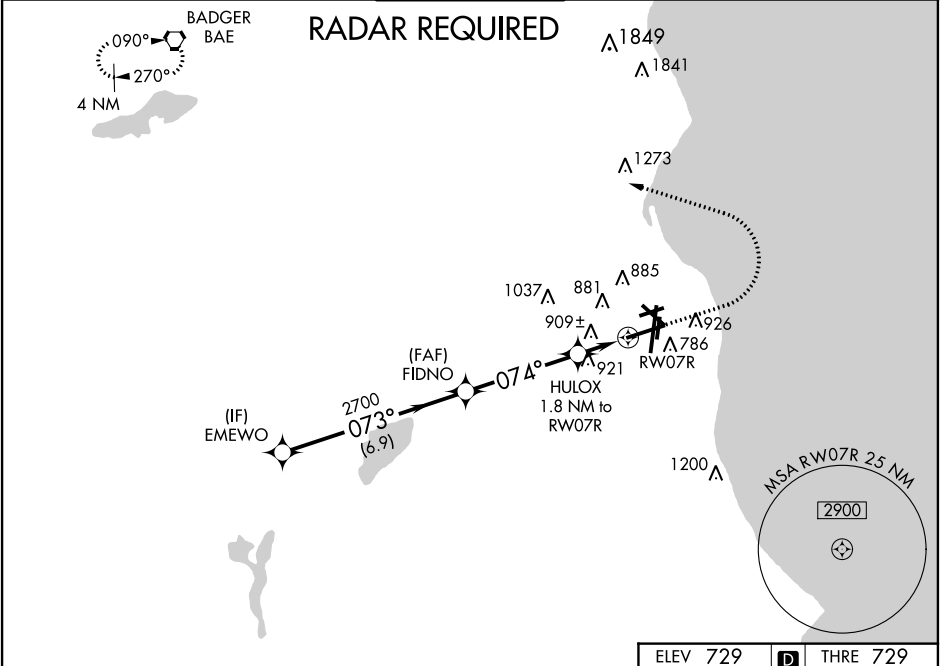
WAAS CH 69226 W07A	APP CRS 074°	Rwy Idg THRE 729 Apt Elev 729
--	------------------------	--

RNAV (GPS) RWY 7R

MILWAUKEE/GENERAL MITCHELL INTL (MKE)

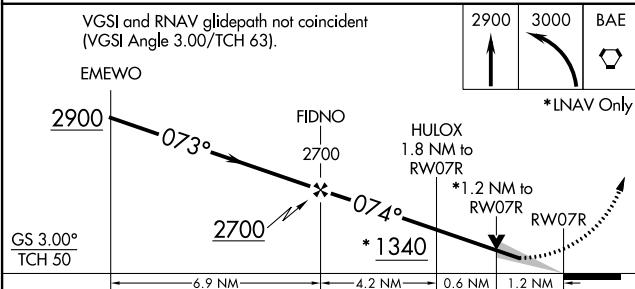
	For uncompensated Baro-VNAV systems, LNAV/VNAV NA below -22°C (-7°F) or above 39°C (102°F). DME/DME RNP-0.3 NA.	MALSR 	MISSED APPROACH: Climb to 900 then climbing left turn to 3000 direct BAE VORTAC and hold.

ATIS 126.4	MILWAUKEE APP CON 126.5 307.0	MILWAUKEE TOWER 124.575 325.8	GND CON 121.8 263.125	CLNC DEL 120.8
----------------------	---	---	---------------------------------	--------------------------



EC-3, 07 FEB 2013 to 07 MAR 2013

EC-3, 07 FEB 2013 to 07 MAR 2013



ELEV 729	D	THRE 729
----------	----------	----------

CATEGORY	A	B	C	D
LPV DA		929/24	200 (200-½)	
LNAV/VNAV DA		1232/60	503 (600-1¼)	
LNAV MDA	1180/24	451 (500-½)	1180/45	451 (500-¾)
CIRCLING	1240-1	511 (600-1)	1240-1½ 511 (600-1½)	1280-2 551 (600-2)

