

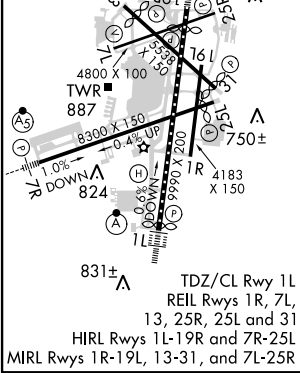
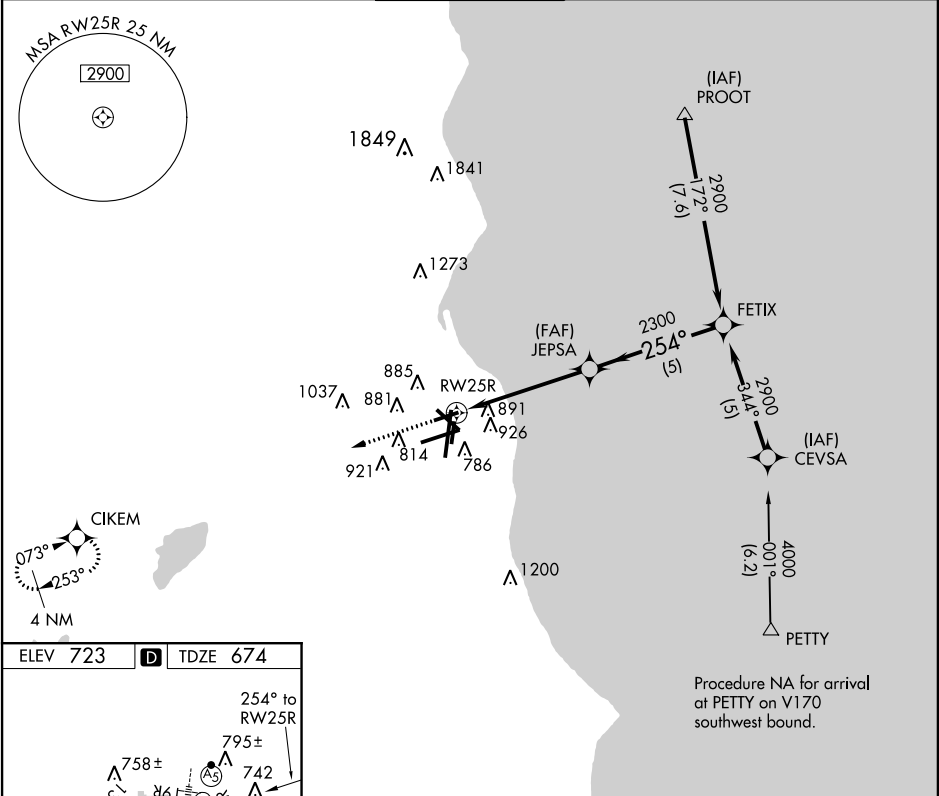
APP CRS 254°	Rwy Idg 4800
	TDZE 674
	Apt Elev 723

RNAV (GPS) RWY 25R

MILWAUKEE/GENERAL MITCHELL INTL (MKE)

 GPS or RNP-0.3 Required. DME/DME RNP-0.3 NA.	MISSED APPROACH: Climb to 2900 direct CIKEM WP and hold.
---	---

ATIS 126.4	MILWAUKEE APP CON 126.5 307.0	MILWAUKEE TOWER 124.575 325.8	GND CON 121.8 263.125	CLNC DEL 120.8
----------------------	---	---	---------------------------------	--------------------------



Procedure NA for arrival at PETTY on V170 southwest bound.

2900	CIKEM	VGSI and descent angles not coincident (VGSI Angle 3.00/TCH 42).	Procedure Turn NA	
CATEGORY	A	B	C	D
LNAV MDA	1160-1	486 (500-1)	1160-1½ 486 (500-1½)	1160-1½ 486 (500-1½)
CIRCLING	1240-1	517 (600-1)	1240-1½ 517 (600-1½)	1280-2 557 (600-2)

EC-3, 07 FEB 2013 to 07 MAR 2013

EC-3, 07 FEB 2013 to 07 MAR 2013