

WAAS CH 62826 W25A	APP CRS 254°	Rwy Idg THRE 7862 Apt Elev 670 729
--	------------------------	--

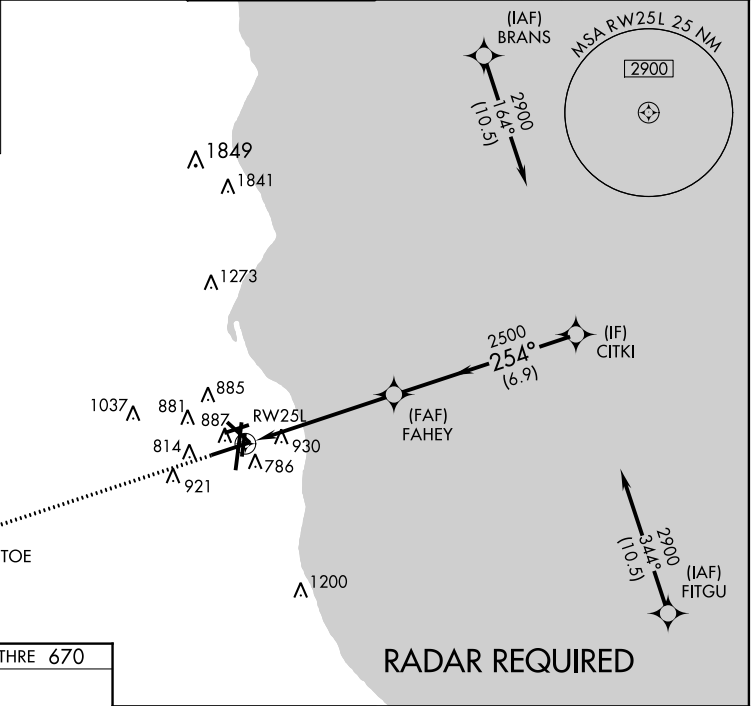
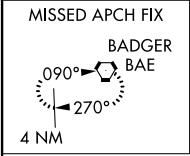
RNAV (GPS) RWY 25L

MILWAUKEE/GENERAL MITCHELL INTL (MKE)

▽ For uncompensated Baro-VNAV systems, LNAV/VNAV NA below -22°C (-7°F) or above 39°C (102°F). DME/DME RNP-0.3 NA. Visibility reduction by helicopters NA.

MISSED APPROACH: Climb to 2900 direct OMTOE and on track 334° to BAE VORTAC and hold.

ATIS 126.4	MILWAUKEE APP CON 126.5 307.0	MILWAUKEE TOWER 124.575 325.8	GND CON 121.8 263.125	CLNC DEL 120.8
----------------------	---	---	---------------------------------	--------------------------

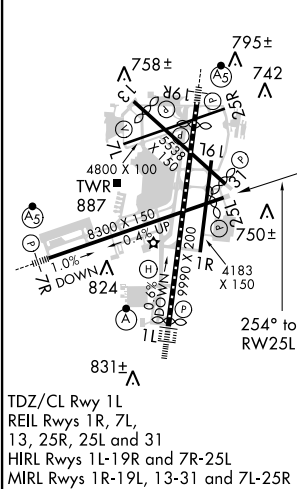


EC-3, 07 FEB 2013 to 07 MAR 2013

EC-3, 07 FEB 2013 to 07 MAR 2013

RADAR REQUIRED

ELEV 729	D	THRE 670
----------	----------	----------



2900	OMTOE	BAE	*LNAV Only		CITKI
↑	✧	tr 334°	✧	✧	✧
			FAHEY		
			2500	2500	2900
			2500		
			1.5	4.1 NM	6.9 NM
					GS 3.00° TCH 47
CATEGORY	A	B	C	D	
LPV DA		960-1	290 (300-1)		
LNAV/VNAV DA		1249-2	579 (600-2)		
LNAV MDA	1180-1	510 (500-1)	1180-1½	510 (500-1½)	
CIRCLING	1240-1	511 (600-1)	1240-1½ 511 (600-1½)	1280-2 551 (600-2)	