

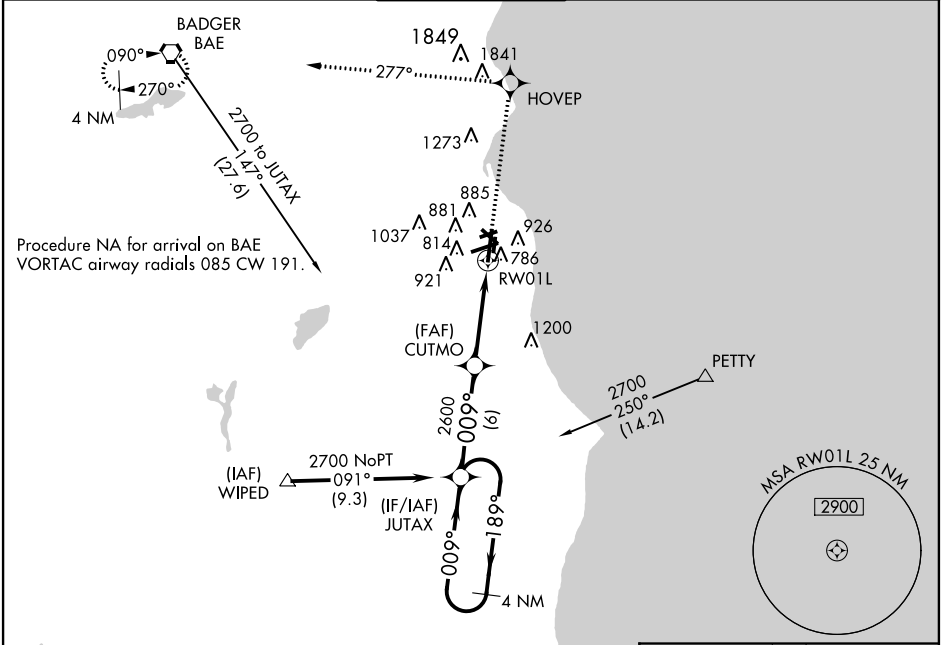
WAAS CH 62816 W01A	APP CRS 009°	Rwy Idg 9080 TDZE 704 Apt Elev 723
--	------------------------	---

RNAV (GPS) RWY 1L

MILWAUKEE/GENERAL MITCHELL INTL (MKE)

<p>▽ For uncompensated Baro-VNAV systems, LNAV/VNAV NA below -16°C (4°F) or above 47°C (116°F). DME/DME RNP-0.3 NA. For inoperative ALSF-2, increase LNAV Cat D visibility to RVR 6000.</p>	<p>ALSF-2 </p> <p>MISSED APPROACH: Climb to 2900 direct HOVEP then left turn via track 277° to BAE VORTAC and hold.</p>
--	---

ATIS 126.4	MILWAUKEE APP CON 126.5 307.0	MILWAUKEE TOWER 124.575 325.8	GND CON 121.8 263.125	CLNC DEL 120.8
----------------------	---	---	---------------------------------	--------------------------



EC-3, 07 FEB 2013 to 07 MAR 2013

EC-3, 07 FEB 2013 to 07 MAR 2013

<p>VGSI and RNAV glidepath not coincident (VGSI Angle 3.00/TCH 65).</p>				<p>2900 HOVEP</p>	<p>BAE</p>
<p>4 NM Holding Pattern</p>				<p>tr 277°</p>	
<p>← 189°</p> <p>2700 ← 009° →</p>		<p>JUTAX</p> <p>009°</p>		<p>CUTMO</p> <p>*1 NM to RWY 1L</p>	
<p>GS 3.00°</p> <p>TCH 57</p>		<p>2600</p>		<p>RWY 1L</p>	
<p>6 NM</p>		<p>4.7 NM</p>		<p>1 NM</p>	
CATEGORY	A	B	C	D	
LPV DA		904/24	200 (200-½)		
LNAV/VNAV DA		1101/40	397 (400-¾)		
LNAV MDA	1120/24	416 (400-½)	1120/40 416 (400-¾)	1120/50 416 (400-1)	
CIRCLING	1240-1	517 (600-1)	1240-1½ 517 (600-1½)	1280-2 557 (600-2)	

