

WAAS CH 99322 W19A	APP CRS 189°	Rwy Idg THRE 671 Apt Elev 729
--	------------------------	---

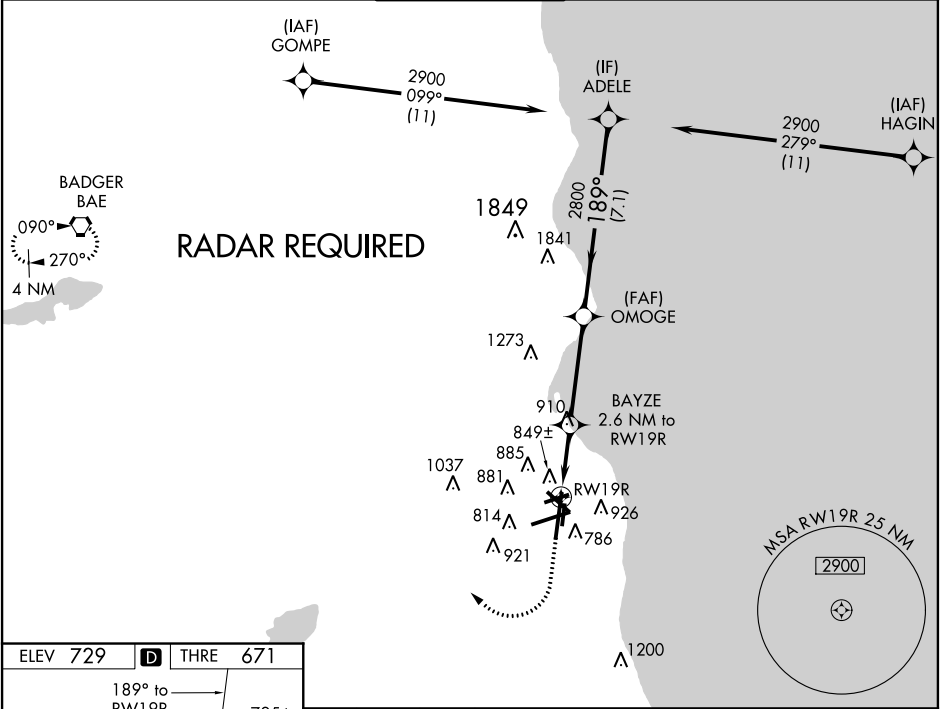
RNAV (GPS) RWY 19R

MILWAUKEE/GENERAL MITCHELL INTL (MKE)

⚠ For uncompensated Baro-VNAV systems, LNAV/VNAV NA below -22°C (-7°F) or above 39°C (102°F). For inoperative MALS, increase LNAV/VNAV all Cats visibility to 1/2 mile. DME/DME RNP-0.3 NA.

MALS MISSED APPROACH: Climb to 2000 then climbing right turn to 2800 direct BAE VORTAC and hold.

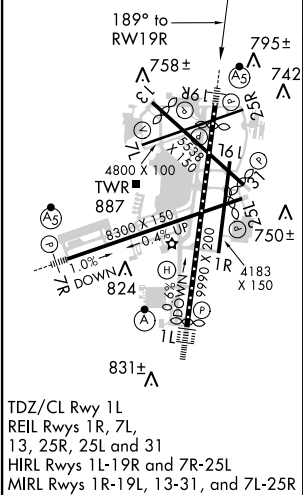
ATIS 126.4	MILWAUKEE APP CON 126.5 307.0	MILWAUKEE TOWER 124.575 325.8	GND CON 121.8 263.125	CLNC DEL 120.8
----------------------	---	---	---------------------------------	--------------------------



EC-3, 07 FEB 2013 to 07 MAR 2013

EC-3, 07 FEB 2013 to 07 MAR 2013

ELEV 729	D	THRE 671
----------	----------	----------



TDZ/CL Rwy 1L
REIL Rwy 1R, 7L,
13, 25R, 25L and 31
HIRL Rwy 1L-19R and 7R-25L
MIRL Rwy 1R-19L, 13-31, and 7L-25R

2000	2800	BAE	VGSi and RNAV glidepath not coincident (VGSi Angle 3.00/TCH 75).	
*RNAV only		BAYZE 2.6 NM to RWY19R	OMOGE	ADELE 2900
RWY19R		*1.1 NM to RWY19R	2800	GS 3.00° TCH 54
1.1 NM		1.5 NM	3.9 NM	7.1 NM
CATEGORY	A	B	C	D
LPV DA	871/24		200 (200-1/2)	
LNAV/VNAV DA	1030/40		359 (400-3/4)	
LNAV MDA	1100/24	429 (400-1/2)	1100/40	429 (400-3/4)
CIRCLING	1240-1	511 (600-1)	1240-1 1/2 511 (600-1 1/2)	1280-2 551 (600-2)