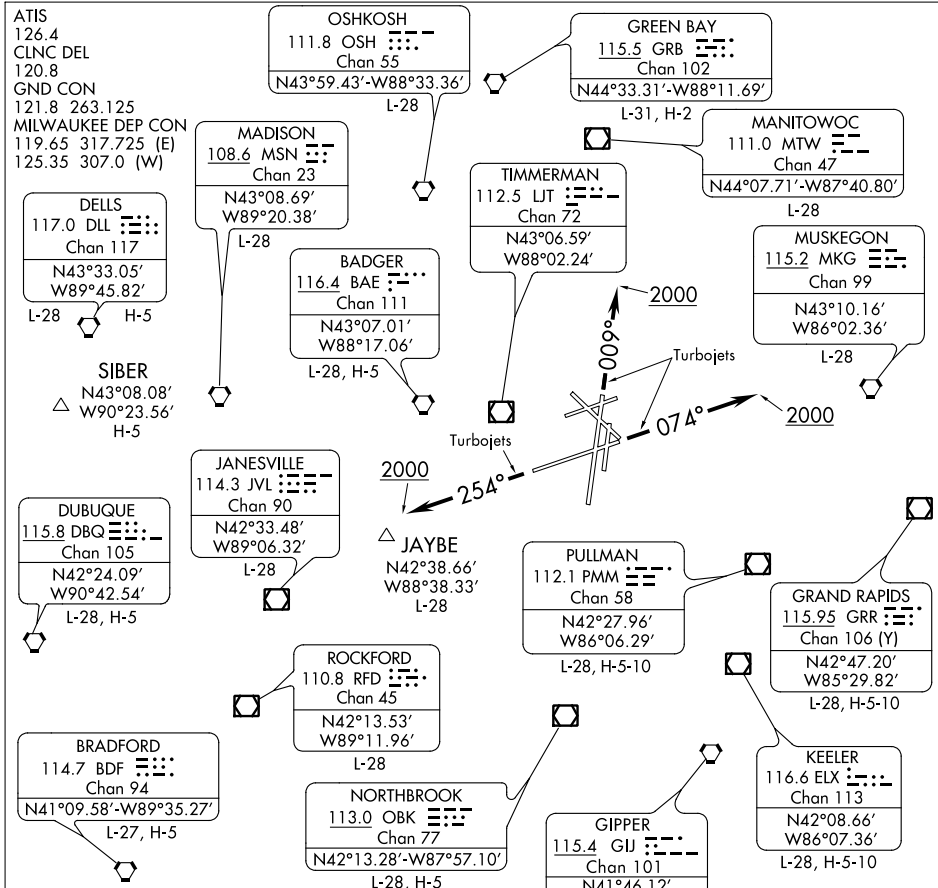


MITCHELL TWO DEPARTURE



EC-3, 07 FEB 2013 to 07 MAR 2013

EC-3, 07 FEB 2013 to 07 MAR 2013

TAKE-OFF MINIMUMS:

- Rwy 1R, 1L, 13, 19R, 19L, 25R, 25L, Standard.
- Rwy 7R, 300-1½ or Standard with a minimum climb of 290' per NM to 1100.
- Rwy 31, 300-1½ or Standard with a minimum climb of 255' per NM to 1000.

SPECIAL INSTRUCTIONS: For all Turbojet aircraft:

- TAKE-OFF Runway 1L: Climb heading 009° to 2000, then turn to assigned heading.
- TAKE-OFF Runway 7R: Climb heading 074° to 2000, then turn to assigned heading.
- TAKE-OFF Runway 19R: Turn to assigned heading.
- TAKE-OFF Runway 25L: Climb heading 254° to 2000, then turn to assigned heading.

NOTE: RADAR Required.

NOTE: Chart not to scale.

DEPARTURE ROUTE DESCRIPTION

All aircraft expect radar vectors to join filed/assigned route. Maintain 5000' or assigned lower altitude. Expect clearance to requested altitude/flight level ten minutes after departure.

MITCHELL TWO DEPARTURE