

LOC/DME I-GMF 111.5 Chan 52	APP CRS 074°	Rwy Idg 8012 THRE 729 Apt Elev 729
---	------------------------	---

ILS or LOC RWY 7R

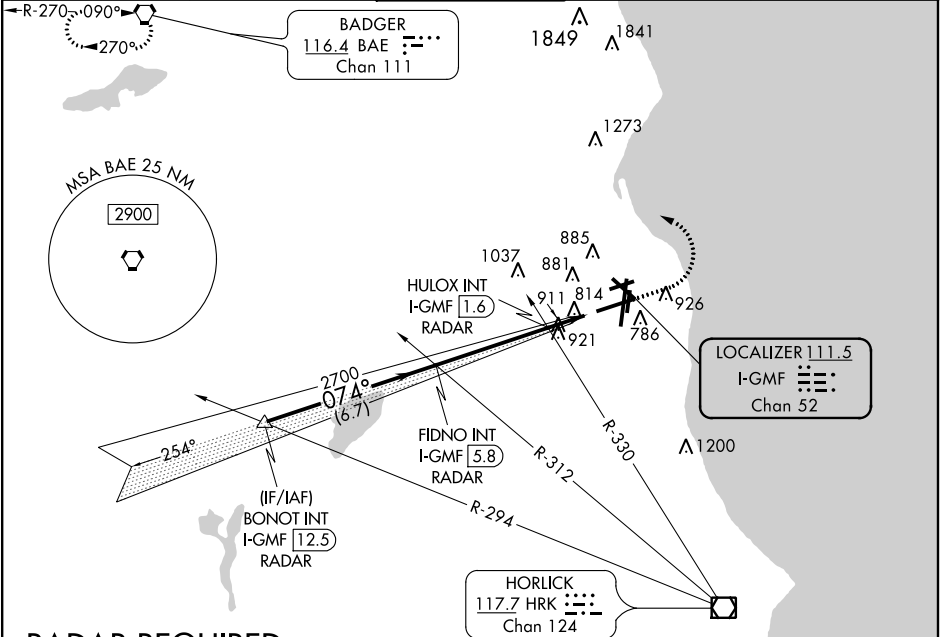
MILWAUKEE/GENERAL MITCHELL INTL (MKE)

▼ **RVR 1800 authorized with use of FD or AP or HUD to DA.

MALSR

MISSED APPROACH: Climb to 2900 then left turn direct BAE VORTAC and hold.

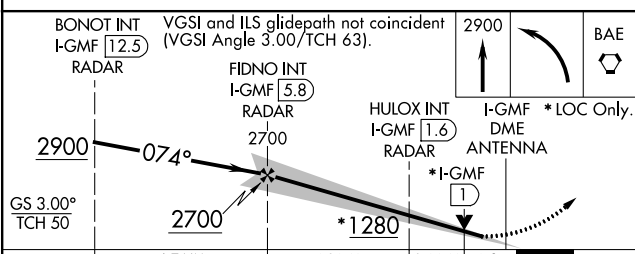
ATIS 126.4	MILWAUKEE APP CON 126.5 307.0	MILWAUKEE TOWER 124.575 325.8	GND CON 121.8 263.125	CLNC DEL 120.8
-----------------------------	--	--	--	---------------------------------



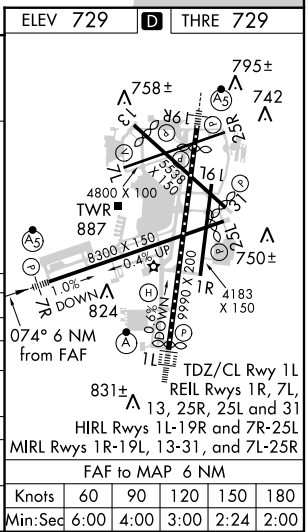
EC-3, 07 FEB 2013 to 07 MAR 2013

EC-3, 07 FEB 2013 to 07 MAR 2013

RADAR REQUIRED



CATEGORY	A	B	C	D
S-ILS 7R **	929/24 200 (200-½)			
S-LOC 7R	1280/24	551 (600-½)	1280/60	551 (600-1)
CIRCLING	1280-1	551 (600-1)	1280-1½ 551 (600-1½)	1280-2 551 (600-2)
HULOX FIX MINIMUMS (DUAL VOR RECEIVERS OR DME OR RADAR REQUIRED)				
S-LOC 7R	1180/24	451 (500-½)	1180/45	451 (500-¾)
CIRCLING	1240-1	511 (600-1)	1240-1½ 511 (600-½)	1280-2 551 (600-2)



Knots	60	90	120	150	180
Min:Sec	6:00	4:00	3:00	2:24	2:00