

MILLINOCKET, MAINE

AL-261 (FAA)

VOR/DME MLT	APP CRS	Rwy Idg	4713
117.9	319°	TDZE	408
Chan 126		Apt Elev	408

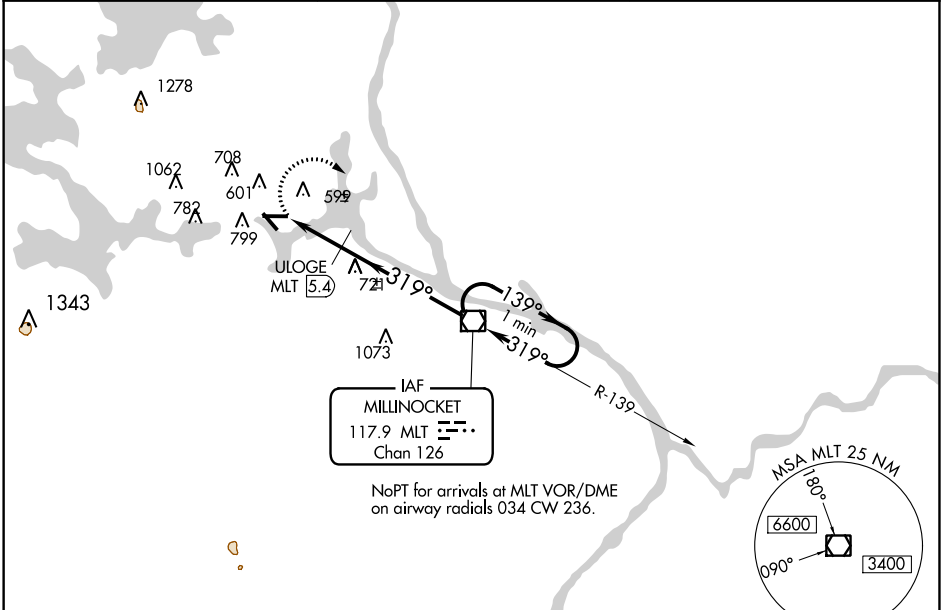
VOR RWY 29

MILLINOCKET MUNI (MLT)

⚠ Visibility reduction by helicopters NA. When local altimeter setting not received, use Houlton altimeter setting and increase all MDA 120 feet, increase S-29 and Circling Cat B visibility ¼ mile and Cat C and D visibility ½ mile. ULOGE Fix Minimums: Increase S-29 Cat C and D visibility ¼ mile, Circling Cat B visibility ¼ mile and Cat C and D visibility ½ mile. When VGSI inop, Straight-in and Circling minimums to Rwy 29 NA at night.

MISSED APPROACH: Climbing right turn to 3000 direct MLT VOR/DME and hold, continue climb-in-hold to 3000.

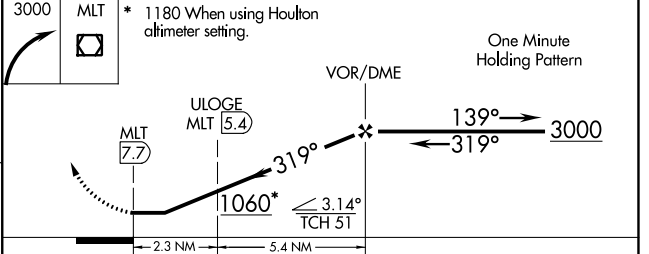
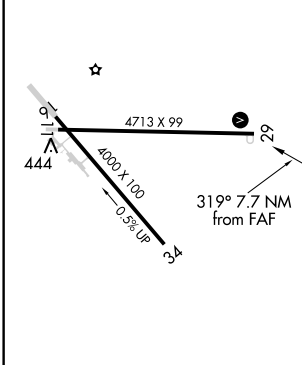
ASOS 135.225	BOSTON CENTER 120.25 346.4	UNICOM 122.8 (CTAF) 📞
------------------------	--------------------------------------	--



NE-1, 07 FEB 2013 to 07 MAR 2013

NE-1, 07 FEB 2013 to 07 MAR 2013

ELEV 408	TDZE 408
-----------------	-----------------



CATEGORY	A	B	C	D
S-29	1060-1	652 (700-1)	1060-1¾ 652 (700-1¾)	1060-2 652 (700-2)
CIRCLING	1100-1	692 (700-1)	1100-2 692 (700-2)	1100-2¼ 692 (700-2¼)
ULOGE FIX MINIMUMS				
S-29	880-1	472 (500-1)	880-1¼ 472 (500-1¼)	880-1½ 472 (500-1½)
CIRCLING	1100-1	692 (700-1)	1100-2 692 (700-2)	1100-2¼ 692 (700-2¼)

REIL Rwy 29 **📞**
MIRL Rwy 11-29 **📞**

FAF to MAP 7.7 NM

Knots	60	90	120	150	180
Min:Sec	7:42	5:08	3:51	3:05	2:34

MILLINOCKET, MAINE
Orig-A 12320

45°39'N-68°41'W

MILLINOCKET MUNI (MLT) VOR RWY 29