

WAAS CH 53628 W29A	APP CRS 287°	Rwy Idg THRE 4713 395 Apt Elev 408
----------------------------------------	------------------------	-----------------------------------------------------------

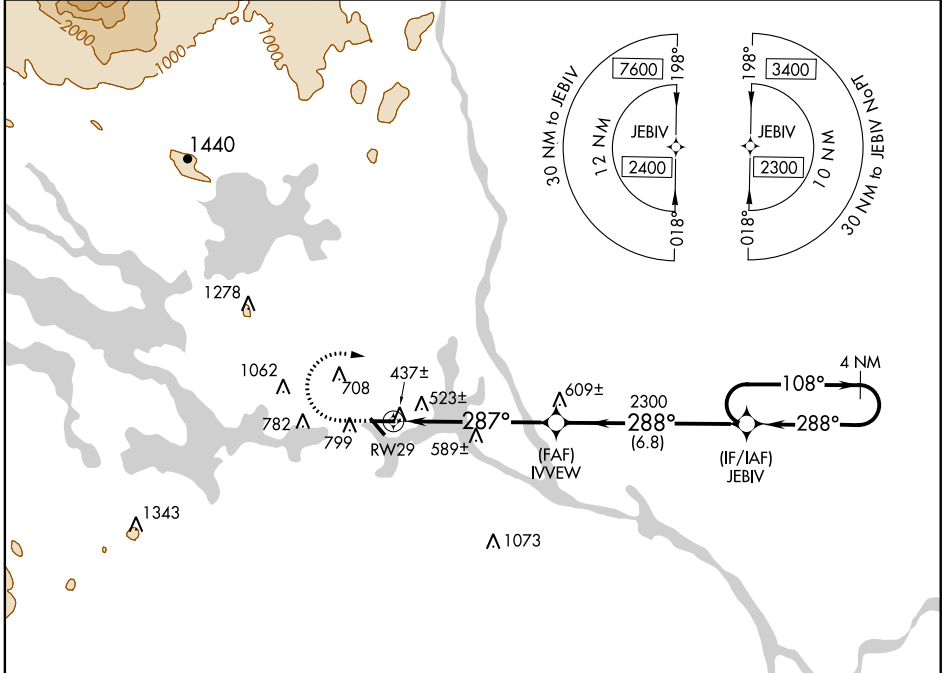
RNAV (GPS) RWY 29

MILLINOCKET MUNI (MLT)

▼ Baro-VNAV NA when using Houlton altimeter setting. For uncompensated Baro-VNAV systems, LNAV/VNAV NA below -15°C (5°F) or above 41°C (105°F). When VGSI inop, Straight-in/Circling Rwy 29 procedure NA at night. DME/DME RNP-0.3 NA. Visibility reduction by helicopters NA. When local altimeter setting not received, use Houlton altimeter setting and increase all DA and all MDA 120 feet; increase LPV and LNAV/VNAV all Cats and LNAV Cat C/D visibility 3/8 mile, and Circling Cat A/B visibility 1/4 mile and Cat C/D visibility 1/2 mile. Circling Rwy 11,16, 34 NA at night.

MISSED APPROACH:
Climb to 920 then climbing right turn to 2300 direct JEBIV and hold.

ASOS 135.225	BOSTON CENTER 120.25 346.4	UNICOM 122.8 (CTAF) 0
------------------------	--------------------------------------	---------------------------------



NE-1, 07 FEB 2013 to 07 MAR 2013

NE-1, 07 FEB 2013 to 07 MAR 2013

ELEV 408	THRE 395	920	2300	JEBIV																									
<p>REIL Rwy 29 0 MIRL Rwy 11-29 0</p>		<table border="1"> <thead> <tr> <th>CATEGORY</th> <th>A</th> <th>B</th> <th>C</th> <th>D</th> </tr> </thead> <tbody> <tr> <td>LPV DA</td> <td></td> <td>684-1</td> <td>289 (300-1)</td> <td></td> </tr> <tr> <td>LNAV/VNAV DA</td> <td></td> <td>802-1 3/8</td> <td>407 (400-1 3/8)</td> <td></td> </tr> <tr> <td>LNAV MDA</td> <td>920-1</td> <td>525 (600-1)</td> <td>920-1 1/2</td> <td>525 (600-1 1/2)</td> </tr> <tr> <td>CIRCLING</td> <td>1100-1</td> <td>692 (700-1)</td> <td>1100-2 692 (700-2)</td> <td>1100-2 1/4 692 (700-2 1/4)</td> </tr> </tbody> </table>			CATEGORY	A	B	C	D	LPV DA		684-1	289 (300-1)		LNAV/VNAV DA		802-1 3/8	407 (400-1 3/8)		LNAV MDA	920-1	525 (600-1)	920-1 1/2	525 (600-1 1/2)	CIRCLING	1100-1	692 (700-1)	1100-2 692 (700-2)	1100-2 1/4 692 (700-2 1/4)
CATEGORY	A	B	C	D																									
LPV DA		684-1	289 (300-1)																										
LNAV/VNAV DA		802-1 3/8	407 (400-1 3/8)																										
LNAV MDA	920-1	525 (600-1)	920-1 1/2	525 (600-1 1/2)																									
CIRCLING	1100-1	692 (700-1)	1100-2 692 (700-2)	1100-2 1/4 692 (700-2 1/4)																									