

APP CRS	Rwy Idg	<b>5000</b>
<b>345°</b>	THRE	<b>5039</b>
	Apt Elev	<b>5039</b>

# RNAV (GPS) RWY 34

MILFORD MUNI/BEN AND JUDY BRISCOE FIELD (MLF)

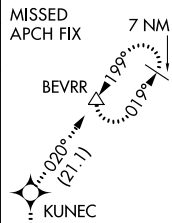
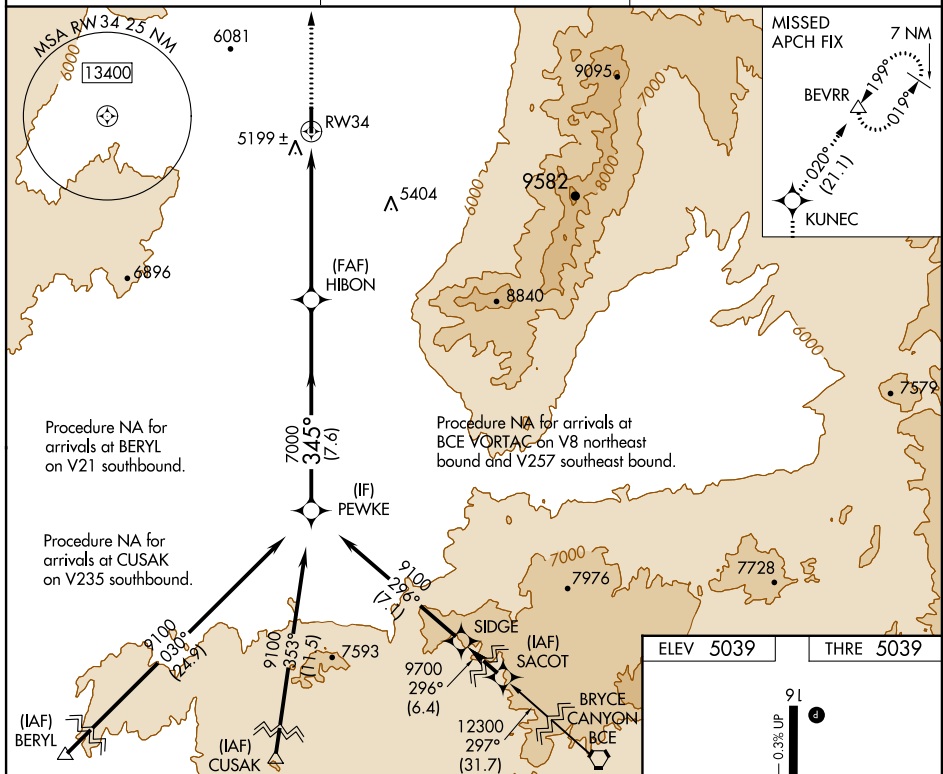
**▼** When local altimeter setting not received, use Cedar City altimeter setting and increase all MDA 180 feet; increase LNAV Cat C/D visibility ½ mile and Circling visibility Cat C/D ¾ mile. When VGSI inop, procedure NA at night. DME/DME RNP-0.3 NA. Visibility reduction by helicopters NA.

**▲** MISSED APPROACH: Climb to 11000 direct KUNEC and on track 020° to BEVRR and hold, continue Climb-in-hold to 11000.

ASOS  
**135.025**

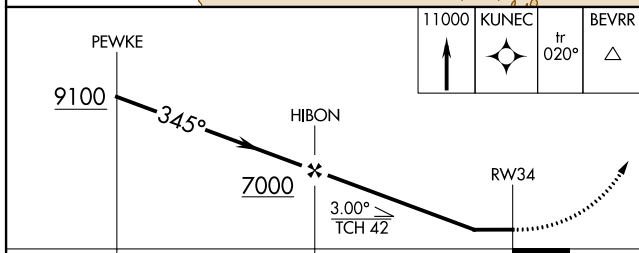
CEDAR CITY RADIO  
**122.1R**

UNICOM  
**122.8 (CTAF)**



SW-4, 07 FEB 2013 to 07 MAR 2013

SW-4, 07 FEB 2013 to 07 MAR 2013



	7.6 NM		6 NM	
CATEGORY	A	B	C	D
LNAV MDA	5460-1	421 (500-1)	5460-1 ¼	421 (500-1 ¼)
CIRCLING	5560-1 521 (600-1)	5580-1 541 (600-1)	5600-1 ½ 561 (600-1 ½)	5680-2 641 (700-2)

ELEV 5039	THRE 5039
-----------	-----------

345° to RWY 34

MIRL Rwy 16-34  
REIL Rwy 16 and 34

# RNAV (GPS) RWY 34