

APP CRS	Rwy Idg	5000
165°	THRE	5023
	Apt Elev	5039

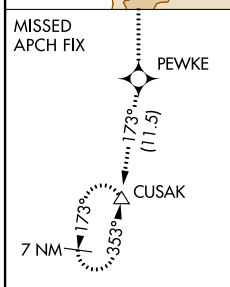
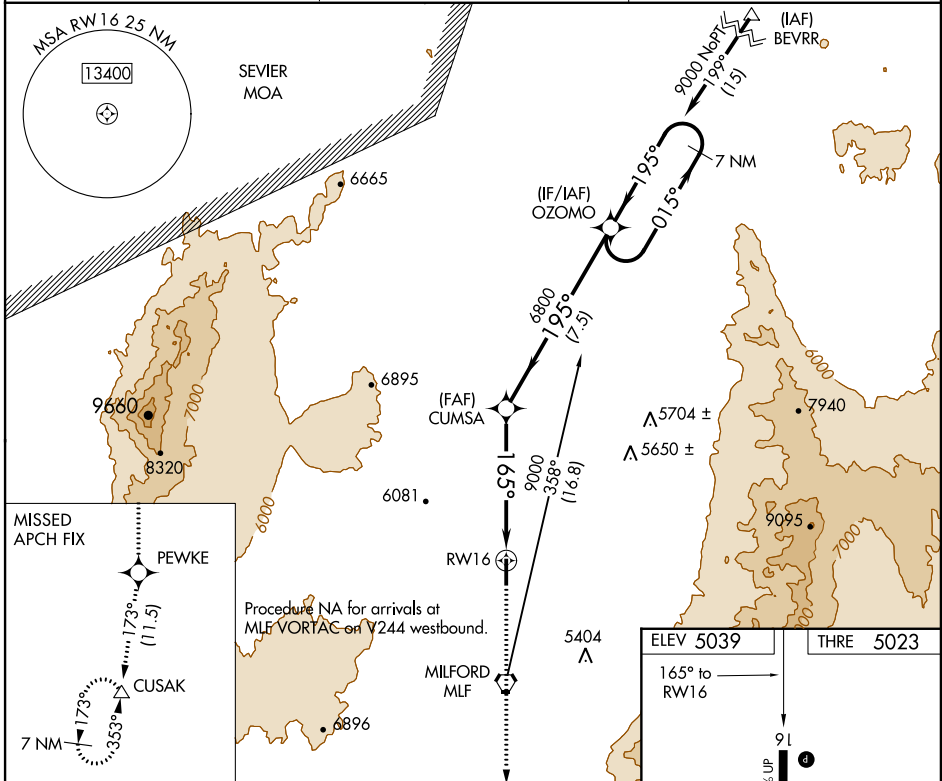
RNAV (GPS) RWY 16

MILFORD MUNI/BEN AND JUDY BRISCOE FIELD (MLF)

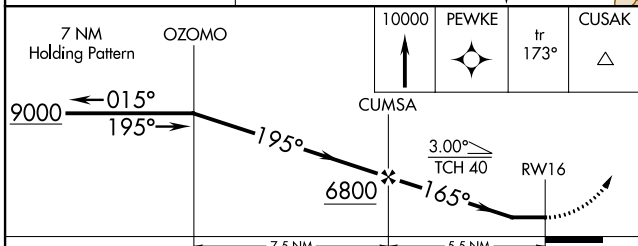
⚠ When local altimeter setting not received, use Cedar City altimeter setting and increase all MDA 200 feet and increase LNAV Cat C/D visibility ½ mile and Circling Cat C/D visibility ¾ mile. When VGSi inop, procedure NA at night. DME/DME RNP-0.3 NA. Visibility reduction by helicopters NA.

MISSED APPROACH: Climb to 10000 direct PEWKE and on track 173° to CUSAK and hold.

ASOS 135.025	CEDAR CITY RADIO 122.1R	UNICOM 122.8 (CTAF)
-------------------------------	--	--------------------------------------



Procedure NA for arrivals at MLF VORTAC or V244 westbound.



ELEV 5039	THRE 5023
165° to RW16	
91	
0.3% UP	
5000 X 75	
34	
MIRL Rwy 16-34	REIL Rwy 16-34

CATEGORY	A	B	C	D
LNAV MDA	5480-1	457 (500-1)	5480-1 3/8	457 (500-1 3/8)
CIRCLING	5560-1 521 (600-1)	5580-1 541 (600-1)	5600-1 1/2 561 (600-1 1/2)	5680-2 641 (700-2)

SW-4, 07 FEB 2013 to 07 MAR 2013

SW-4, 07 FEB 2013 to 07 MAR 2013