

VOR/DME MLS 112.1 Chan 58	APP CRS 030°	Rwy Idg 5680 THRE 2629 Apt Elev 2630
---	------------------------	--

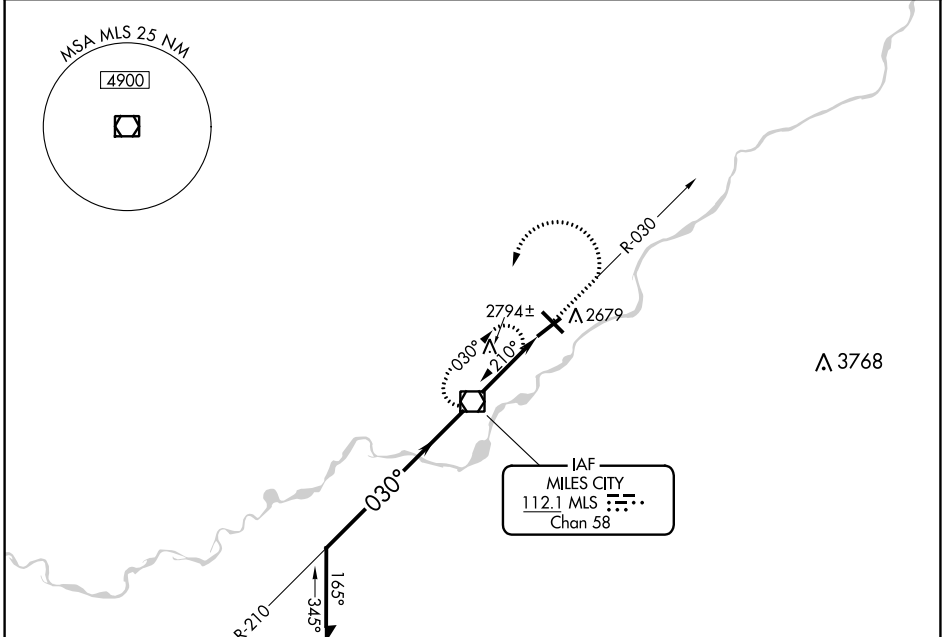
VOR RWY 4

MILES CITY/ FRANK WILEY FIELD (MLS)

▼ Visibility reduction by helicopters NA.
When VGSI inop, Straight-in/Circling Rwy 4 procedure NA at night.
When VGSI inop, Circling Rwy 12 NA at night.

MISSED APPROACH: Climb to 4700 on MLS VOR/DME R-030 then climbing left turn to 5000 direct MLS VOR/DME and hold.

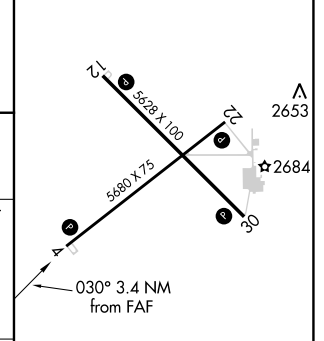
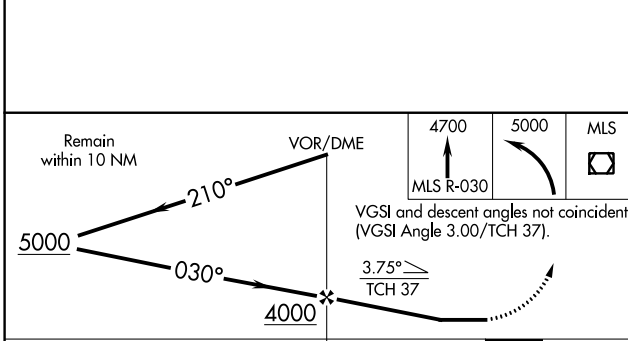
ASOS 135.575	GREAT FALLS RADIO 122.2 255.4	UNICOM 123.0 (CTAF) 0
------------------------	---	---------------------------------



NW-1, 07 FEB 2013 to 07 MAR 2013

NW-1, 07 FEB 2013 to 07 MAR 2013

ELEV 2630	D	THRE 2629
-----------	----------	-----------



CATEGORY	A	B	C	D
S-4	3060-1	431 (500-1)	3060-1½ 431 (500-1½)	NA
CIRCLING	3060-1 430 (500-1)	3080-1 450 (500-1)	3080-1½ 450 (500-1½)	NA

REIL Rws 4, 12, 22 and 30 **0**
MIRL Rws 4-22 and 12-30 **0**

FAF to MAP 3.4 NM

Knots	60	90	120	150	180
Min:Sec	3:24	2:16	1:42	1:22	1:08