

WAAS CH 42600 W04A	APP CRS 040°	Rwy Idg THRE 5680 2629 Apt Elev 2630
--	------------------------	---

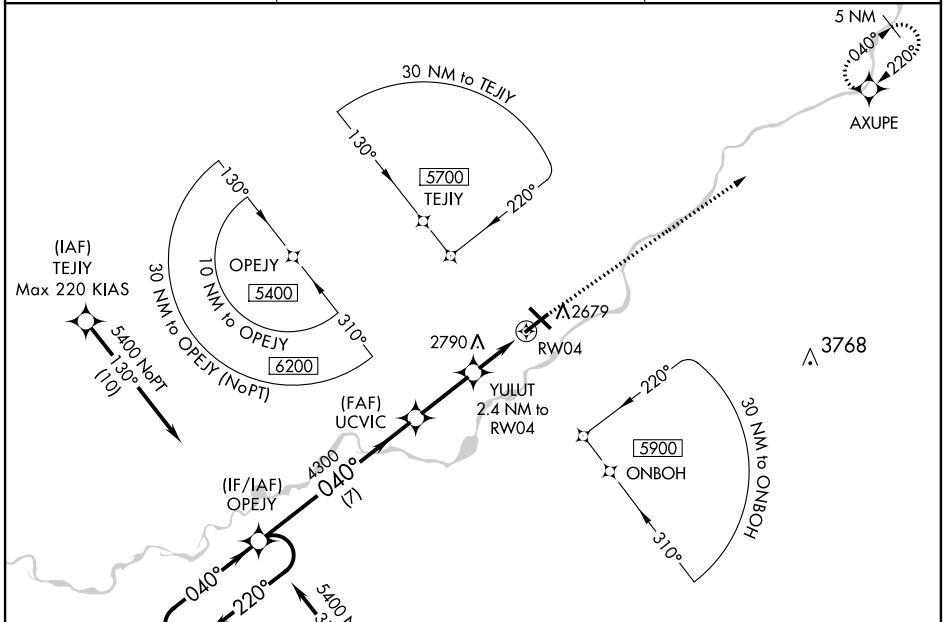
RNAV (GPS) RWY 4

MILES CITY/ FRANK WILEY FIELD (MLS)

▽ DME/DME RNP -0.3 NA. Visibility reduction by helicopters NA. When VGSI inop, Straight-in/Circling Rwy 4 procedure NA at night. When VGSI inop, circling Rwy 12 NA at night. For uncompensated Baro-VNAV systems, LNAV/VNAV NA below -27°C (-16°F) or above 27°C (80°F).

MISSED APPROACH: Climb to 5800 direct AXUPE and hold.

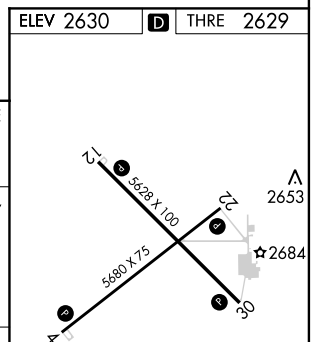
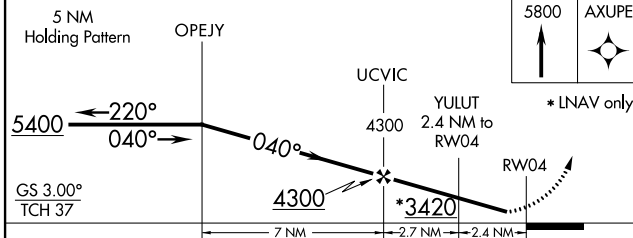
ASOS 135.575	GREAT FALLS RADIO 122.2 255.4	UNICOM 123.0 (CTAF) 1
------------------------	---	--



NW-1, 07 FEB 2013 to 07 MAR 2013

NW-1, 07 FEB 2013 to 07 MAR 2013

ELEV 2630	D	THRE 2629
-----------	----------	-----------



CATEGORY	A	B	C	D
LPV DA		2879-1	250 (300-1)	
LNAV/VNAV DA		2879-1	250 (300-1)	
LNAV MDA	3040-1	411 (500-1)	3040-1 ½	411 (500-1 ½)
CIRCLING	3040-1 410 (500-1)	3080-1 450 (500-1)	3080-1 ½ 450 (500-1 ½)	3180-2 550 (600-2)

REIL Rws 4, 12, 22 and 30 **1**
MIRL Rws 4-22 and 12-30 **1**