

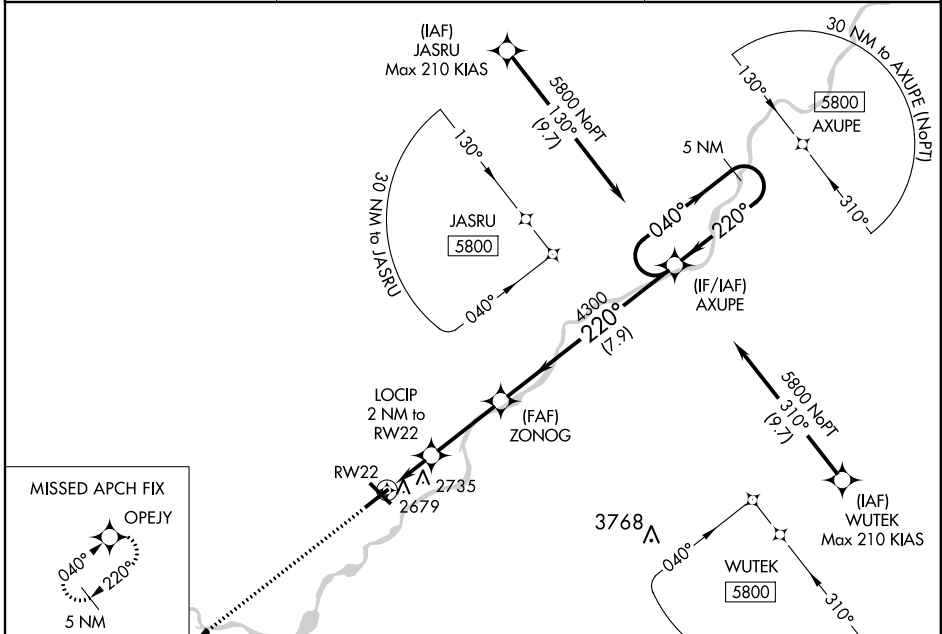
WAAS CH <b>77924</b> <b>W22A</b>	APP CRS <b>220°</b>	Rwy Idg THRE <b>2626</b> Apt Elev <b>2630</b>
--	------------------------	---

# RNAV (GPS) RWY 22

MILES CITY/ FRANK WILEY FIELD (MLS)

<b>▽</b> DME/DME RNP-0.3 NA. For uncompensated Baro-VNAV systems, LNAV/VNAV NA below -27°C (-1.6°F) or above 27°C (80°F). When VGSI inop, circling to Rwy 12 NA at night.	MISSED APPROACH: Climb to 5400 direct OPEJY and hold.
---	---

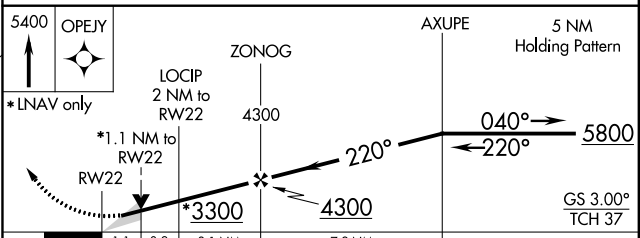
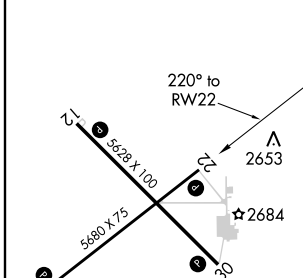
ASOS <b>135.575</b>	GREAT FALLS RADIO <b>122.2 255.4</b>	UNICOM <b>123.0</b> (CTAF) <b>📻</b>
------------------------	---	--



NW-1, 07 FEB 2013 to 07 MAR 2013

NW-1, 07 FEB 2013 to 07 MAR 2013

ELEV 2630	<b>D</b>	THRE 2626
-----------	----------	-----------



CATEGORY	A	B	C	D
LPV DA		2876-7/8	250 (300-7/8)	
LNAV/VNAV DA		2890-7/8	264 (300-7/8)	
LNAV MDA		3000-1	374 (400-1)	
CIRCLING	3020-1 390 (400-1)	3080-1 450 (500-1)	3080-1½ 450 (500-1½)	3180-2 550 (600-2)