

MIDLAND, TEXAS

AL-258 (FAA)

12264

WAAS CH 90529 W04A	APP CRS 045°	Rwy Idg THRE Apt Elev	4605 2851 2872
--	------------------------	-----------------------------	---

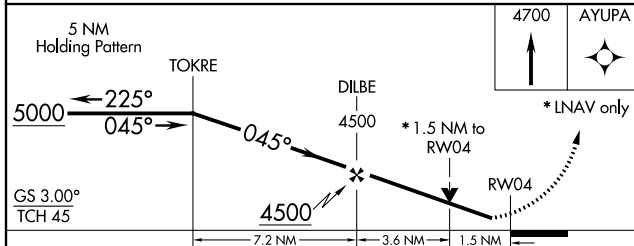
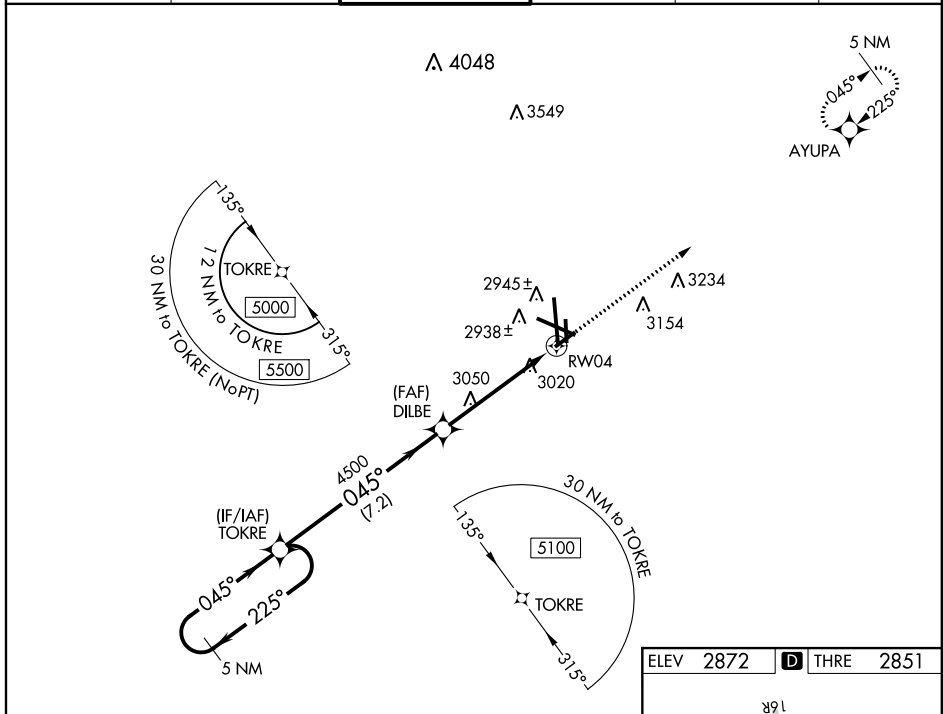
RNAV (GPS) RWY 4

MIDLAND INTL (MAF)

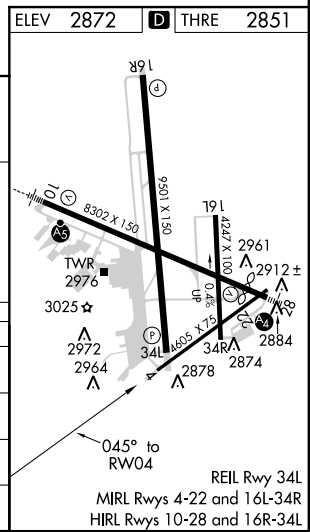
ASR	For uncompensated Baro-VNAV systems, LNAV/VNAV NA below -11°C (13°F) or above 25°C (77°F). DME/DME RNP-0.3 NA. Visibility reduction by helicopters NA. Circling to Rwy 16L NA at night.				MISSED APPROACH: Climb to 4700 direct AYUPA and hold.	
	ATIS 126.8 235.975	MIDLAND APP CON* 124.6 290.4	MIDLAND TOWER* 118.7 (CTAF) 273.45	GND CON 121.9 348.6	CLNC DEL 118.05 317.65	UNICOM 122.95

SC-3, 07 FEB 2013 to 07 MAR 2013

SC-3, 07 FEB 2013 to 07 MAR 2013



CATEGORY	A	B	C	D
LPV DA		3051-3/4	200 (200-3/4)	
LNAV/VNAV DA		3196-1 1/8	345 (400-1 1/8)	
LNAV MDA	3360-1	509 (500-1)	3360-1 3/8	509 (500-1 3/8)
CIRCLING	3440-1	568 (600-1)	3440-1 1/2	3520-2 648 (700-2)



MIDLAND, TEXAS
Amdt 1 20SEP12

31°57'N-102°12'W

RNAV (GPS) RWY 4