

WAAS CH 66029 W34A	APP CRS 346°	Rwy Idg THRE Apt Elev	9501 2851 2872
--	------------------------	-----------------------------	---

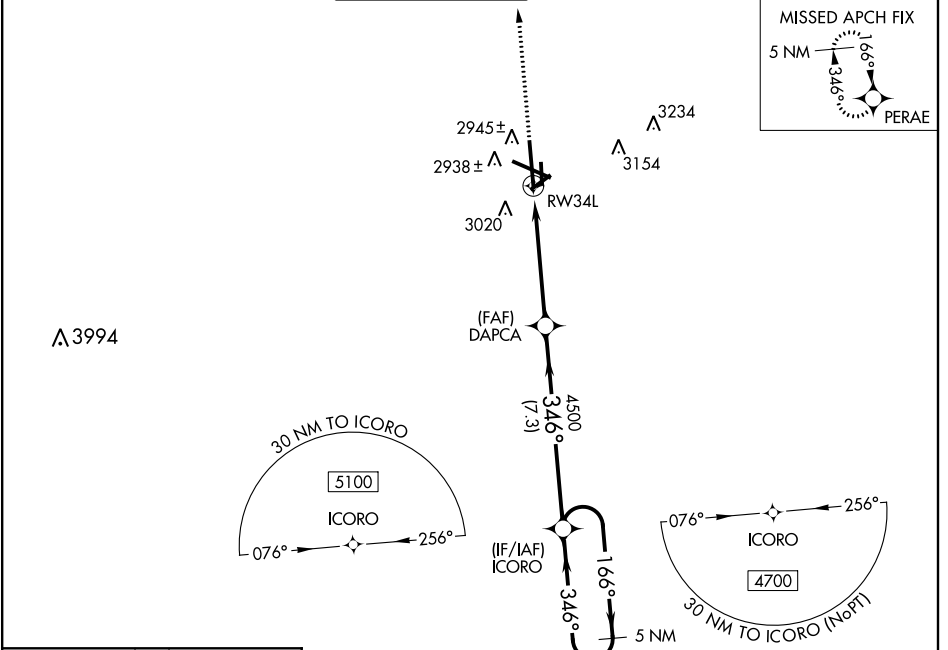
RNAV (GPS) RWY 34L

MIDLAND INTL (MAF)

V For uncompensated Baro-VNAV systems, LNAV/VNAV NA below -11°C (13°F) or above 26°C (78°F). DME/DME RNP-0.3 NA. Circling to Rwy 16L NA at night.

MISSED APPROACH: Climb to 5100 direct PERAE and hold.

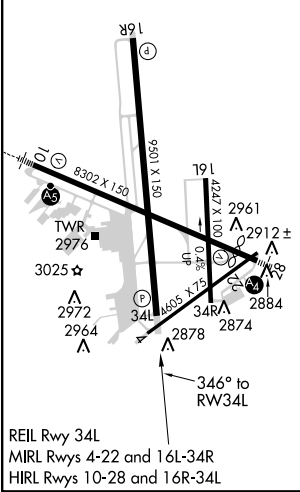
ATIS 126.8 235.975	MIDLAND APP CON* 124.6 290.4	MIDLAND TOWER* 118.7(CTAF) 0273.45	GND CON 121.9 348.6	CLNC DEL 118.05 317.65	UNICOM 122.95
------------------------------	--	--	-------------------------------	----------------------------------	-------------------------



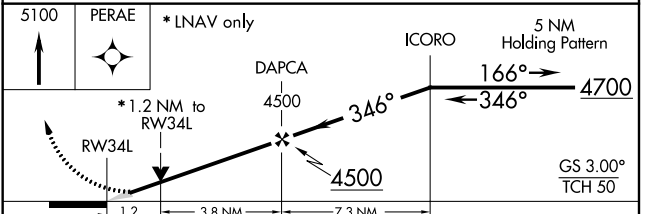
SC-3, 07 FEB 2013 to 07 MAR 2013

SC-3, 07 FEB 2013 to 07 MAR 2013

ELEV 2872	D	THRE 2851
-----------	----------	-----------



REIL Rwy 34L
MIRL Rwys 4-22 and 16L-34R
HIRL Rwys 10-28 and 16R-34L



CATEGORY	A	B	C	D
LPV DA		3051- ³ / ₄	200 (200- ³ / ₄)	
LNAV/VNAV DA		3196-1 ¹ / ₈	345 (400-1 ¹ / ₈)	
LNAV MDA	3280-1	429 (500-1)	3280-1 ¹ / ₄	429 (500-1 ¹ / ₄)
CIRCLING	3440-1	568 (600-1)	3440-1 ¹ / ₂	3520-2 648 (700-2)