

# WINCO ONE DEPARTURE (RNAV)

ATIS 133.675  
 CLNC DEL 135.35  
 GND CON  
 121.8 348.6(8L/8R/12/26L/26R)  
 127.5 348.6(9/27/30)  
 MIAMI TOWER  
 118.3 256.9  
 MIAMI DEP CON  
 119.45 290.325

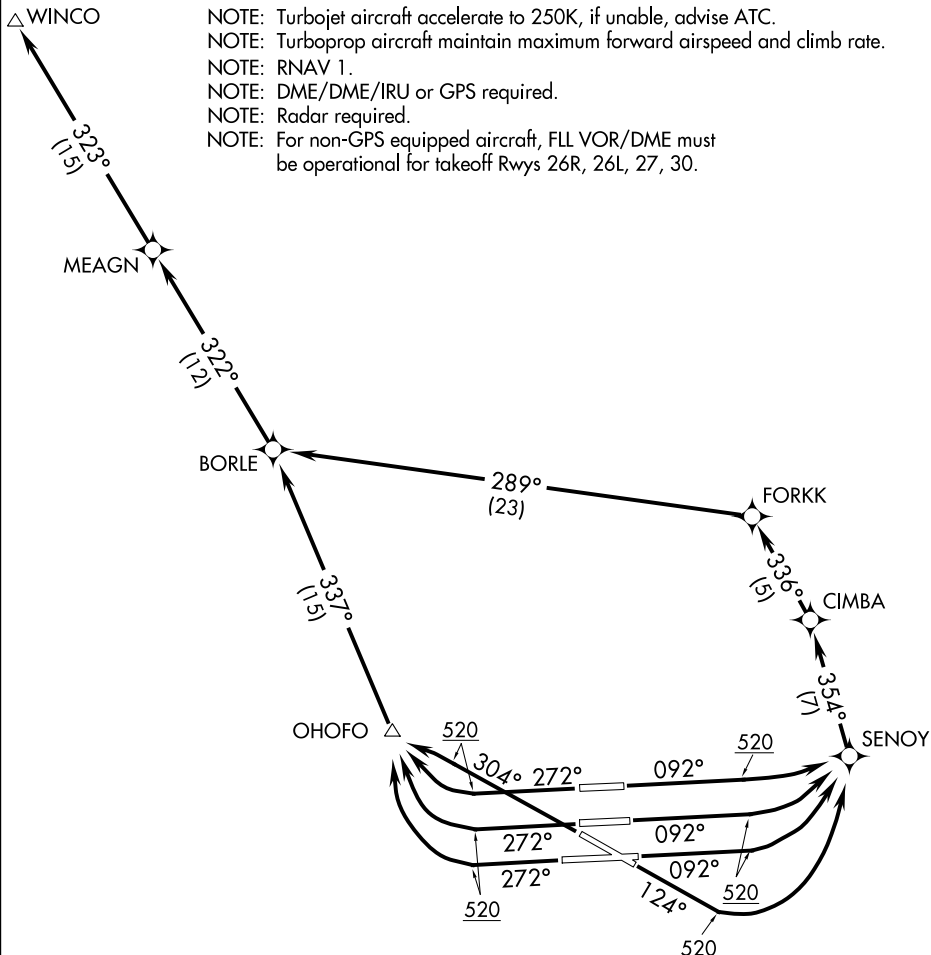
### TAKEOFF MINIMUMS:

Rwy 8L: 300-1¼ or Standard with minimum obstacle climb of 382' per NM to 300, minimum ATC climb of 500' per NM to 520.  
 Rwys 8R, 9: Standard with minimum ATC climb of 500' per NM to 520.  
 Rwy 12: Standard with minimum obstacle climb of 229' per NM to 1200, minimum ATC climb of 500' per NM to 520.  
 Rwys 26R, 26L, 27, 30: Standard with minimum ATC climb of 300' per NM to 520.

- NOTE: Turbojet aircraft accelerate to 250K, if unable, advise ATC.
- NOTE: Turboprop aircraft maintain maximum forward airspeed and climb rate.
- NOTE: RNAV 1.
- NOTE: DME/DME/IRU or GPS required.
- NOTE: Radar required.
- NOTE: For non-GPS equipped aircraft, FLL VOR/DME must be operational for takeoff Rwys 26R, 26L, 27, 30.

SE-3, 07 FEB 2013 to 07 MAR 2013

SE-3, 07 FEB 2013 to 07 MAR 2013



(NARRATIVE ON FOLLOWING PAGE)

NOTE: Chart not to scale.

# WINCO ONE DEPARTURE (RNAV)