

VALLY ONE DEPARTURE (RNAV)

SE-3, 07 FEB 2013 to 07 MAR 2013

TAKE-OFF MINIMUMS:

- Rwy 8L: 300-1¼ or Standard with minimum obstacle climb of 382' per NM to 300', minimum ATC climb of 500' per NM to 520'.
- Rwy 8R: Standard with minimum ATC climb of 500' per NM to 520'.
- Rwy 9: Standard with minimum obstacle climb of 233' per NM to 1200', minimum ATC climb of 500' per NM to 520'.
- Rwy 12: Standard with minimum obstacle climb of 229' per NM to 1200', minimum ATC climb of 500' per NM to 520'.
- Rwy 26R/26L/27/30: Standard with minimum ATC climb of 300' per NM to 520'.

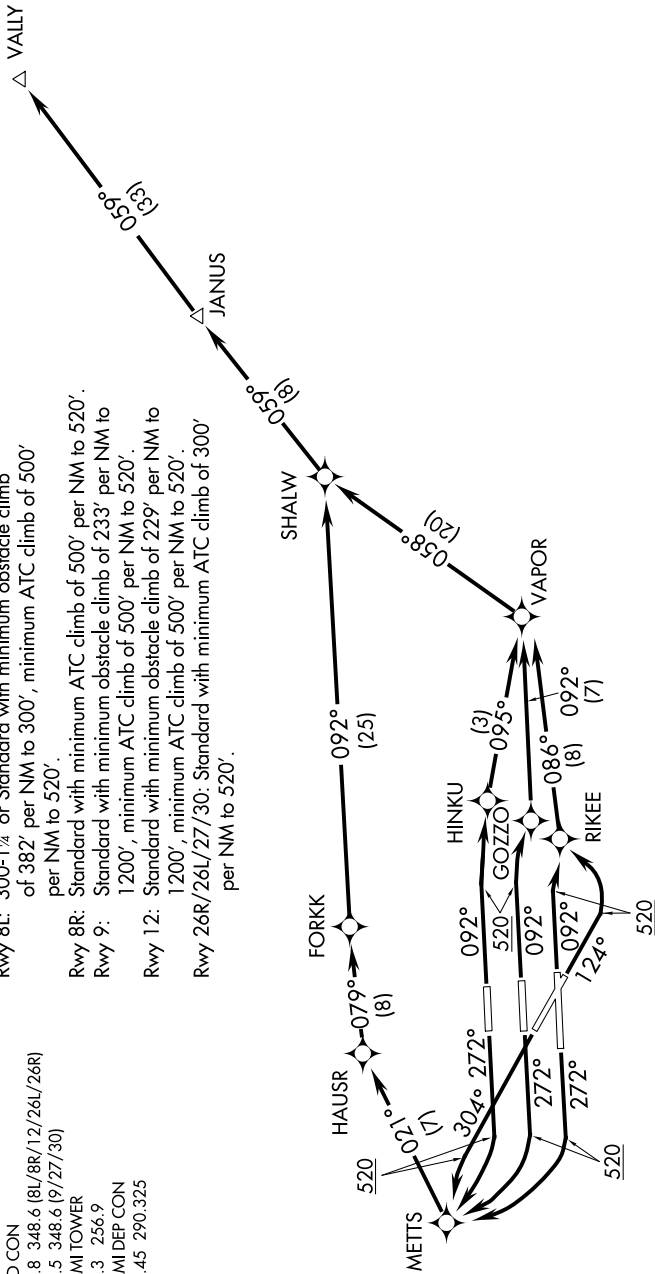
ATIS 133.675
 CLNC DEL 135.35
 GND CON
 121.8 348.6 (8L/8R/12/26L/26R)
 127.5 348.6 (9/27/30)
 MIAMI TOWER
 118.3 256.9
 MIAMI DEP CON
 119.45 290.325

VALLY ONE DEPARTURE (RNAV)

(CONTINUED ON NEXT PAGE)

NOTE: Chart not to scale.

SE-3, 07 FEB 2013 to 07 MAR 2013



- NOTE: Turbojet aircraft accelerate to 250K, if unable, advise ATC.
- NOTE: Turboprop aircraft maintain maximum forward airspeed and climb rate.
- NOTE: DME/DME/IRU or GPS required.
- NOTE: Radar required
- NOTE: RNAV 1.