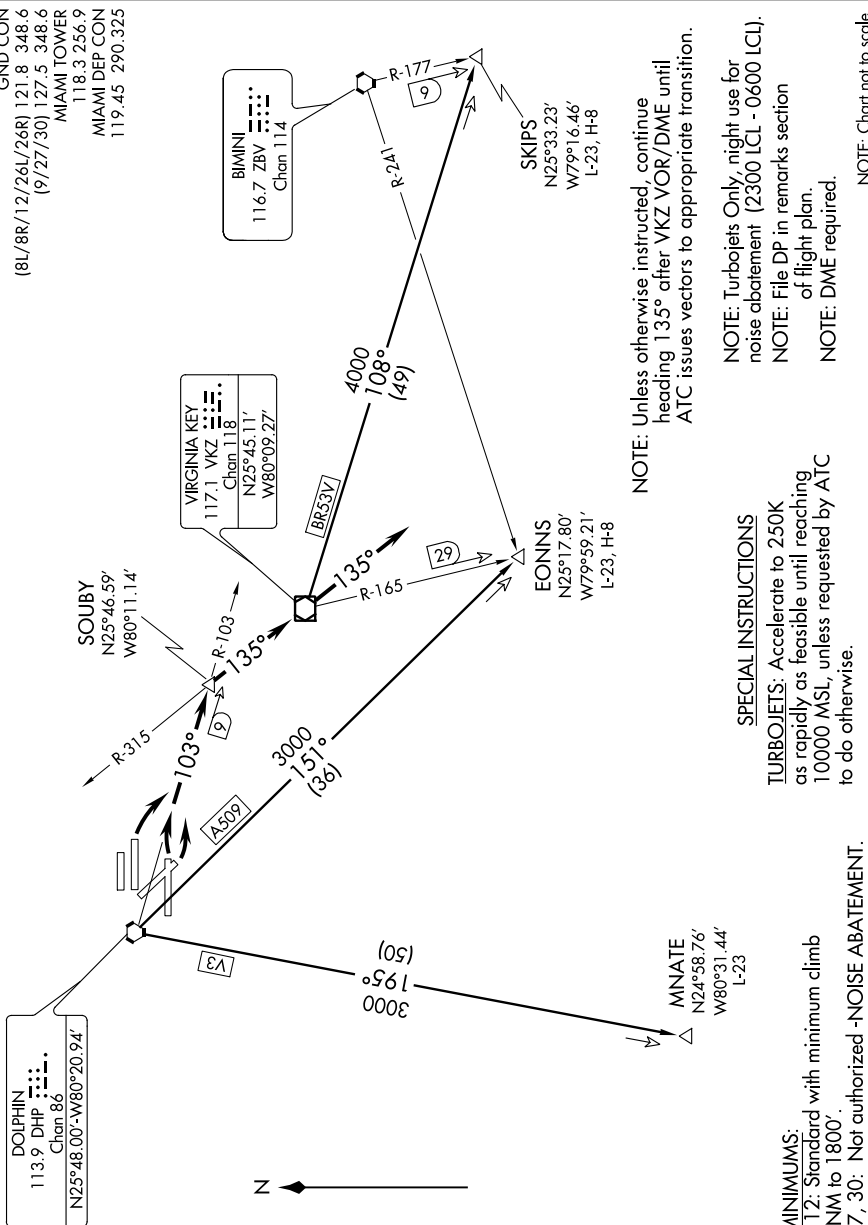


# SOUBY FOUR DEPARTURE

SE-3, 07 FEB 2013 to 07 MAR 2013

( NARRATIVE ON FOLLOWING PAGE )

ATIS 133.675  
 CLNC DEL 135.35  
 GND CON  
 (8L/8R/12L/26L/26R) 121.8 348.6  
 (9/27/30) 127.5 348.6  
 MIAMI TOWER  
 118.3 256.9  
 MIAMI DEP CON  
 119.45 290.325



NOTE: Unless otherwise instructed, continue heading 135° after VKZ VOR/DME until ATC issues vectors to appropriate transition.

NOTE: Turbojets Only, night use for noise abatement (2300 LCL - 0600 LCL).  
 NOTE: File DP in remarks section of flight plan.  
 NOTE: DME required.

NOTE: Chart not to scale.

### SPECIAL INSTRUCTIONS

**TURBOJETS:** Accelerate to 250K as rapidly as feasible until reaching 10000 MSL, unless requested by ATC to do otherwise.

**TAKE-OFF MINIMUMS:**  
 Rwy's 8R, 9, 12: Standard with minimum climb of 370' per NM to 1800'.  
 Rwy's 26L, 27, 30: Not authorized -NOISE ABATEMENT.