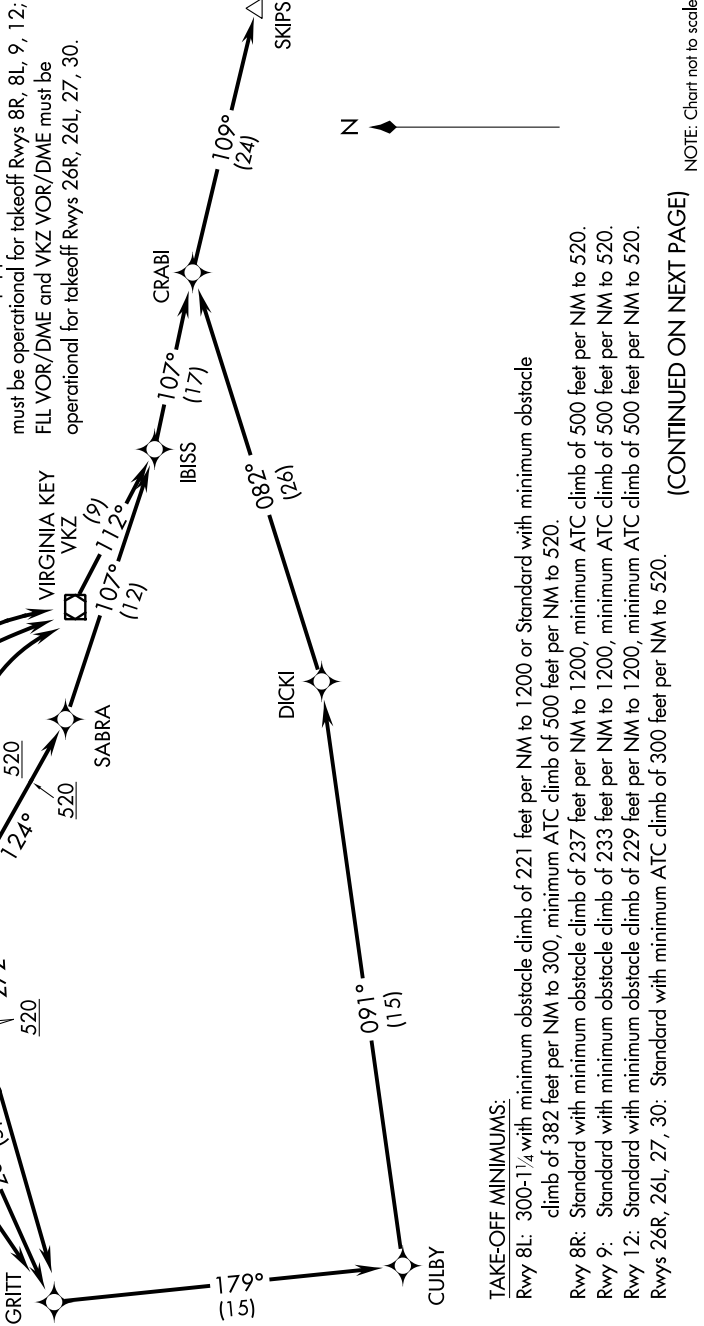


SKIPS ONE DEPARTURE (RNAV)

SE-3, 07 FEB 2013 to 07 MAR 2013

- ATIS 133.675
- CLNC DEL 135.35
- GND CON
- 121.8 348.6 (8L/8R/12/26L/26R) 520
- 127.5 348.6 (9/27/30)
- MIAMI TOWER
- 118.3 256.9
- MIAMI DEP CON
- 125.5 354.1

- NOTE: Turbojet aircraft accelerate to 250K, if unable, advise ATC.
- NOTE: Turboprop aircraft maintain maximum forward airspeed and climb rate.
- NOTE: DME/DME/IRU or GPS required.
- NOTE: Radar required
- NOTE: RNAV 1.
- NOTE: For Non-GPS equipped aircraft: FLL VOR/DME must be operational for takeoff Rwy's 8R, 8L, 9, 12; FLL VOR/DME and VKZ VOR/DME must be operational for takeoff Rwy's 26R, 26L, 27, 30.



TAKE-OFF MINIMUMS:

- Rwy 8L: 300-1/4 with minimum obstacle climb of 221 feet per NM to 1200 or Standard with minimum obstacle climb of 382 feet per NM to 300, minimum ATC climb of 500 feet per NM to 520.
- Rwy 8R: Standard with minimum obstacle climb of 237 feet per NM to 1200, minimum ATC climb of 500 feet per NM to 520.
- Rwy 9: Standard with minimum obstacle climb of 233 feet per NM to 1200, minimum ATC climb of 500 feet per NM to 520.
- Rwy 12: Standard with minimum obstacle climb of 229 feet per NM to 1200, minimum ATC climb of 500 feet per NM to 520.
- Rwys 26R, 26L, 27, 30: Standard with minimum ATC climb of 300 feet per NM to 520.

(CONTINUED ON NEXT PAGE)

NOTE: Chart not to scale.