

# RNAV (GPS) Z RWY 8R

MIAMI INTL (MIA)

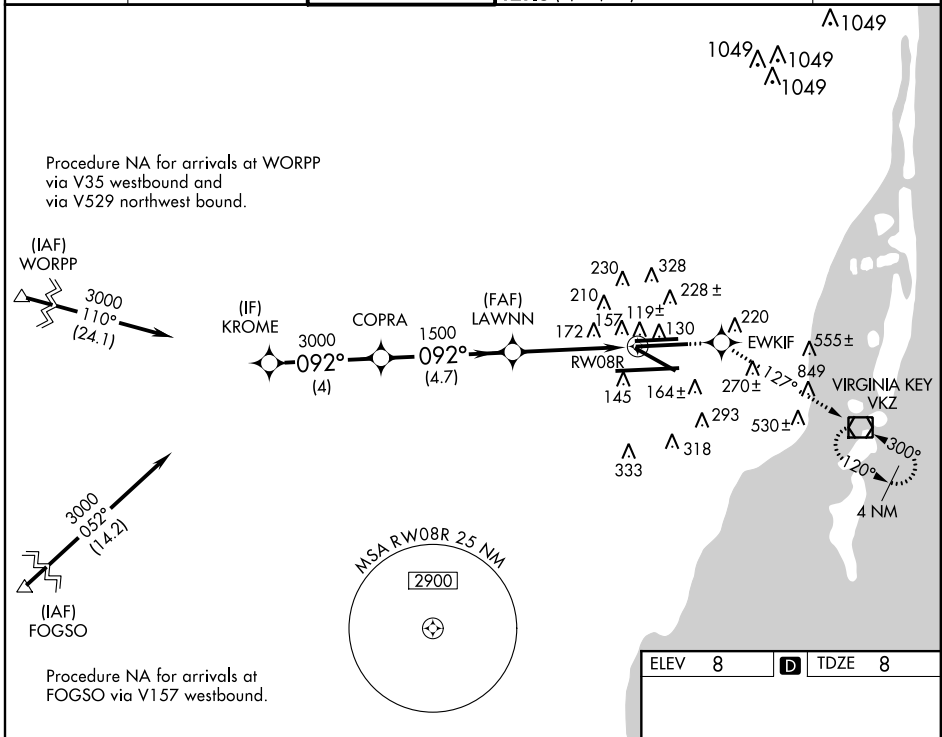
WAAS CH <b>97404</b> <b>W08A</b>	APP CRS <b>092°</b>	Rwy Idg <b>10506</b> TDZE <b>8</b> Apt Elev <b>8</b>
--	------------------------	--

▼ For inoperative MALS, increase LPV all Cats visibility to RVR 5000, and LNAV/VNAV all Cats visibility to 1¾. For uncompensated Baro-VNAV systems, LNAV/VNAV NA below -15°C (5°F) or above 48°C (118°F). DME/DME RNP-0.3 NA.

MALS

MISSED APPROACH: Climb to 3000 direct EWKIF and via 127° track to VIRGINIA KEY VOR/DME and hold.

ATIS <b>119.15</b>	MIAMI APP CON <b>124.85 322.3</b>	MIAMI TOWER <b>118.3 256.9</b>	GND CON <b>121.8</b> (8L/8R/12/26L/26R) <b>127.5</b> (9/27/30)	<b>348.6</b>	CLNC DEL <b>135.35</b>
-----------------------	--------------------------------------	-----------------------------------	--	--------------	---------------------------



SE-3, 07 FEB 2013 to 07 MAR 2013

SE-3, 07 FEB 2013 to 07 MAR 2013

Procedure Turn NA	VGSI and RNAV glidepath not coincident (VGSI Angle 3.00/TCH 77)	3000	EWKIF	127° tr	VKZ
*RNAV only					
CATEGORY	A	B	C	D	
LPV DA		273/24	265 (300-½)		
LNAV/VNAV DA		530/60	522 (600-1¼)		
LNAV MDA	600/24	592 (600-½)	600/50 592 (600-1)	600/60 592 (600-1¼)	

