

MIAMI, FLORIDA

AL-257 (FAA)

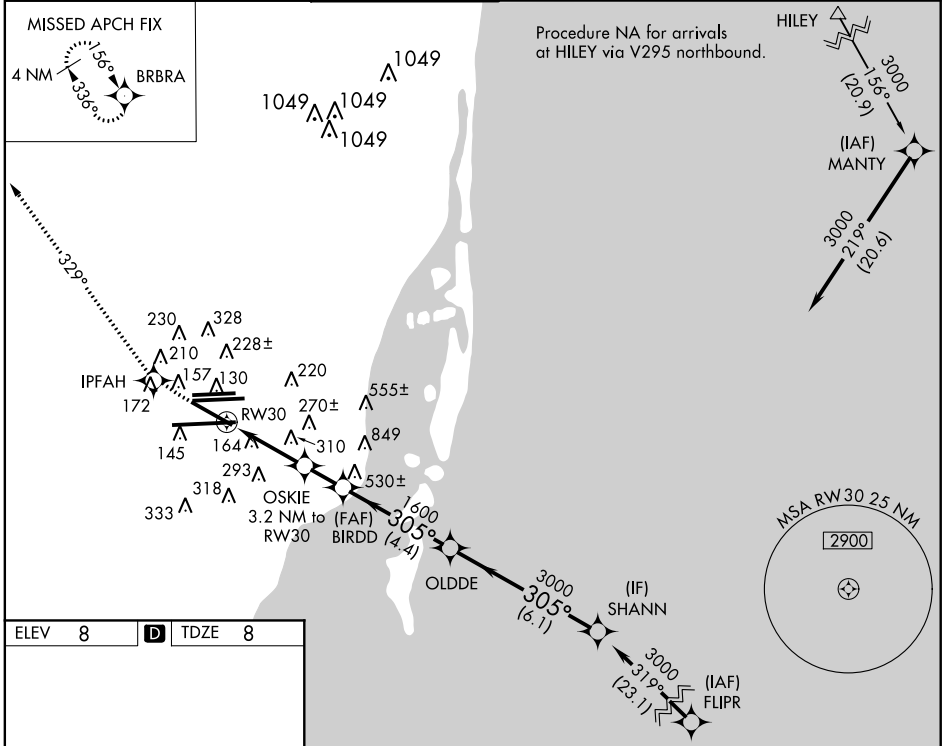
RNAV (GPS) Z RWY 30

MIAMI INTL (MIA)

WAAS CH 40105 W30A	APP CRS 305°	Rwy Idg TDZE Apt Elev	7913 8 8
--	------------------------	-----------------------------	-------------------------------------

Inoperative table does not apply to LNAV Cat C and D. DME/DME RNP-0.3 NA	MALS	MISSED APPROACH: Climb to 3000 direct IPFAH and via 329° track to BRBRA and hold.

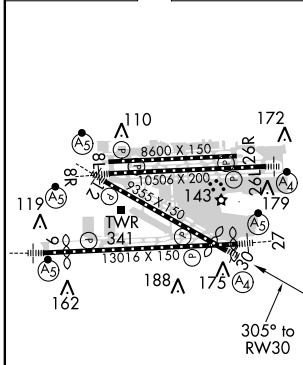
ATIS 119.15	MIAMI APP CON 124.85 322.3	MIAMI TOWER 118.3 256.9	GND CON 121.8 (8L/8R/12/26L/26R) 127.5 (9/27/30)	348.6	CLNC DEL 135.35
-----------------------	--------------------------------------	-----------------------------------	--	--------------	---------------------------



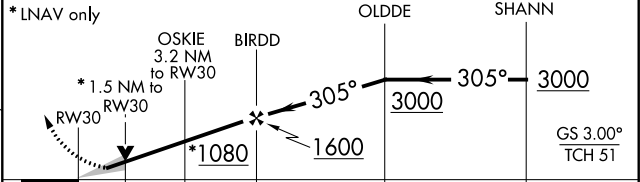
SE-3, 07 FEB 2013 to 07 MAR 2013

SE-3, 07 FEB 2013 to 07 MAR 2013

ELEV 8	D	TDZE 8
--------	----------	--------



3000	IPFAH	329° tr	BRBRA	VGSI and LPV glidepath not coincident (VGSI Angle 3.00/TCH 71).	Procedure Turn NA
------	-------	---------	-------	---	-------------------



CATEGORY	A	B	C	D
LPV DA	285/50 277 (300-1)			
LNAV MDA	560/40	552 (600-¾)	560-1½ 552 (600-1½)	560-1¾ 552 (600-1¾)

TDZ/CL Rwy 8R
REIL Rwy 8L and 26R
HIRL all Rwy

MIAMI, FLORIDA
Amdt 1 13010

25°48'N-80°17'W

RNAV (GPS) Z RWY 30

MIAMI INTL (MIA)