

MIAMI, FLORIDA

AL-257 (FAA)

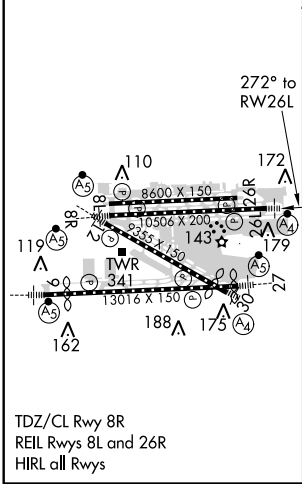
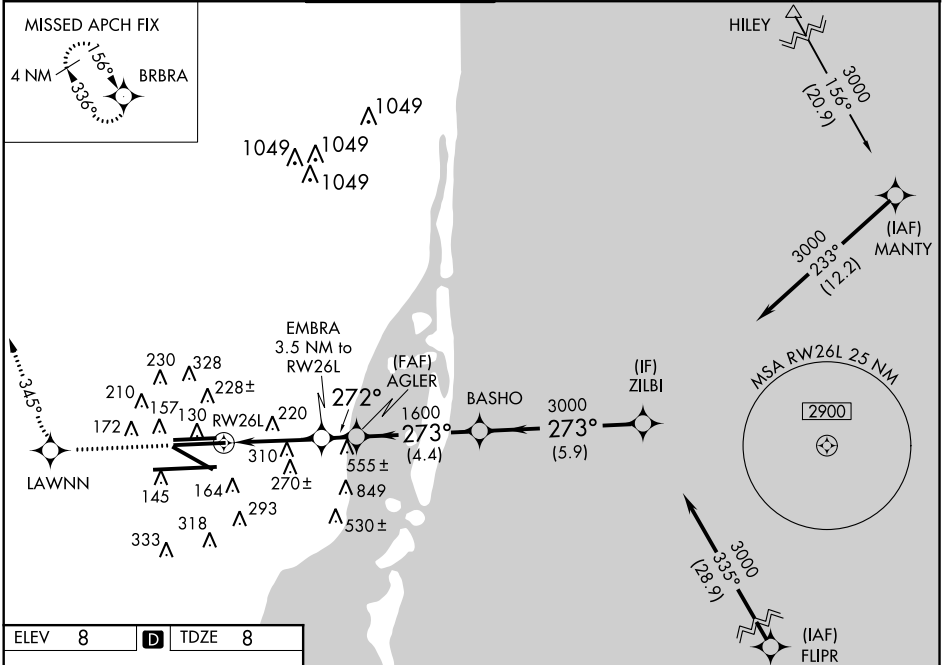
13010

WAAS CH 81905 W26A	APP CRS 272°	Rwy Idg 10506 TDZE 8 Apt Elev 8
--	------------------------	--

RNAV (GPS) Z RWY 26L

MIAMI INTL (MIA)

▼ DME/DME RNP-0.3 NA. For uncompensated Baro-VNAV systems, LNAV/VNAV NA below -15°C (5°F) or above 48°C (118°F). W Inoperative table does not apply to LNAV/VNAV all Cats and LNAV Cat C.		MALSF 	MISSED APPROACH: Climb to 2000 direct LAWNN and via 345° track to BRBRA and hold.
ATIS 119.15	MIAMI APP CON 124.85 322.3	MIAMI TOWER 118.3 256.9	GND CON 121.8 (8L/8R/12/26L/26R) 127.5 (9/27/30)
			CLNC DEL 135.35



2000	LAWNN	345° tr	BRBRA	VGSI and RNAV glidepath not coincident (VGSI Angle 3.00/TCH 73).				Procedure Turn NA
*LNAV only		EMBRA 3.5 NM to RWY26L	AGLER	BASHO	ZILBI			
* 1.5 NM to RWY26L			1600	273°	3000	273°	3000	GS 3.00° TCH 58
1.5 NM		2 NM	1.3 NM	4.4 NM	5.9 NM			
CATEGORY	A	B	C	D				
LPV DA	325/50		317 (400-1)					
LNAV/VNAV DA	450-1½		442 (500-1½)					
LNAV MDA	560/40	552 (600-¾)	560-1½ 552 (600-1½)	560-1¾ 552 (600-1¾)				

SE-3, 07 FEB 2013 to 07 MAR 2013

SE-3, 07 FEB 2013 to 07 MAR 2013

MIAMI, FLORIDA
Amdt 1A 03MAY12

25°48'N-80°17'W

RNAV (GPS) Z RWY 26L

MIAMI INTL (MIA)