


APP CRS	Rwy Idg	10506
092°	TDZE	8
	Apt Elev	8

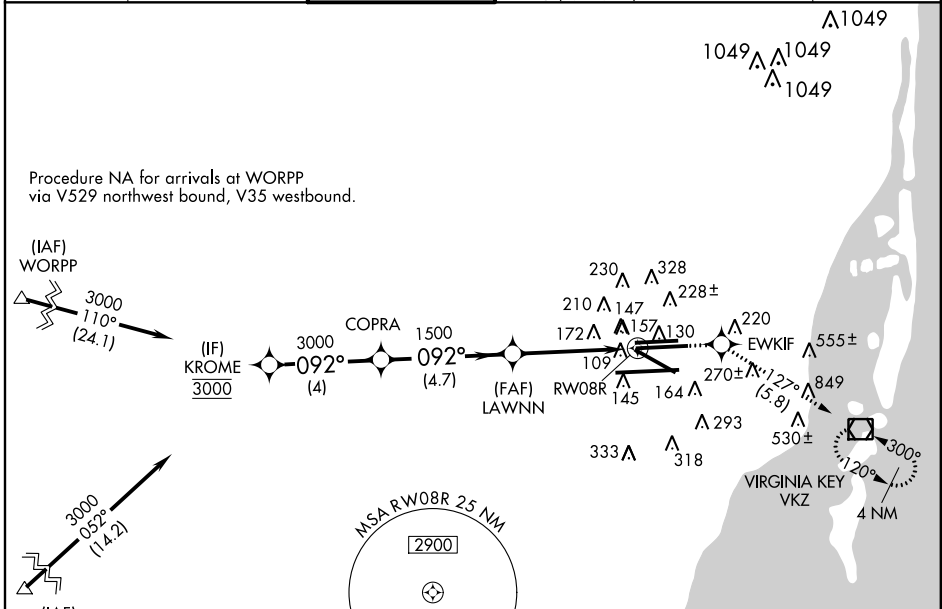
RNAV (RNP) Y RWY 8R

MIAMI INTL (MIA)

NA For inoperative MALSR, increase RNP 0.11 all Cats visibility to RVR 6000, RNP 0.30 all Cats visibility to 1½.
 For uncompensated Baro-VNAV systems, procedure NA below 6°C (42°F) or above 49°C (120°F). GPS Required.
 * RNP 0.11 missed approach requires minimum climb of 330 feet per NM to 600.

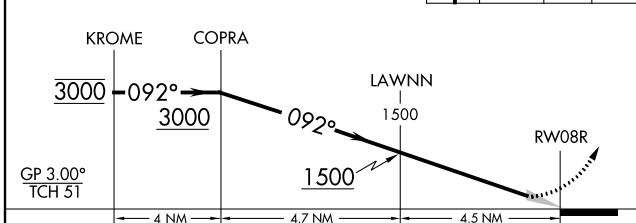
MALSR
 MISSED APPROACH: Climb to 3000 direct EWKIF and via 127° track to VKZ VOR/DME and hold, continue climb-in-hold to 3000.

ATIS	MIAMI APP CON	MIAMI TOWER	GND CON	CLNC DEL
119.15	124.85 322.3	118.3 256.9	121.8 (8L/8R/12/26L/26R) 127.5 (9/27/30)	348.6 135.35

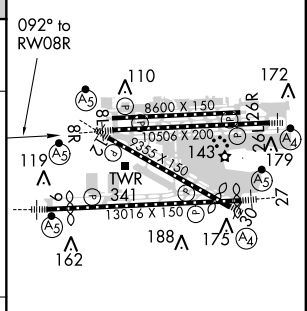


(IAF) FOGSO
 Procedure NA for arrivals at FOGSO via V157 westbound.

Procedure Turn NA
 VGSI and RNAV glidepath not coincident (VGSI Angle 3.00/TCH 77).
 3000 EWKIF 127° tr VKZ



ELEV	8	D	TDZE	8
------	----------	----------	------	----------



CATEGORY	A	B	C	D
RNP 0.11 DA*		354/32	346 (400-½)	
RNP 0.30 DA		458/50	450 (500-1)	

AUTHORIZATION REQUIRED

TDZ/CL Rwy 8R
 REIL Rwy 8L and 26R
 HIRL all Rwy 8

SE-3, 07 FEB 2013 to 07 MAR 2013

SE-3, 07 FEB 2013 to 07 MAR 2013