


APP CRS	Rwy Idg	<b>12755</b>
<b>272°</b>	TDZE	<b>8</b>
	Apt Elev	<b>8</b>

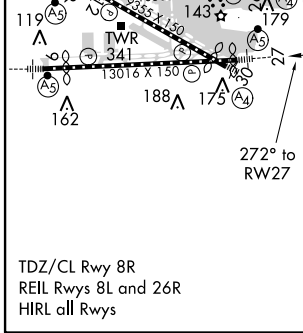
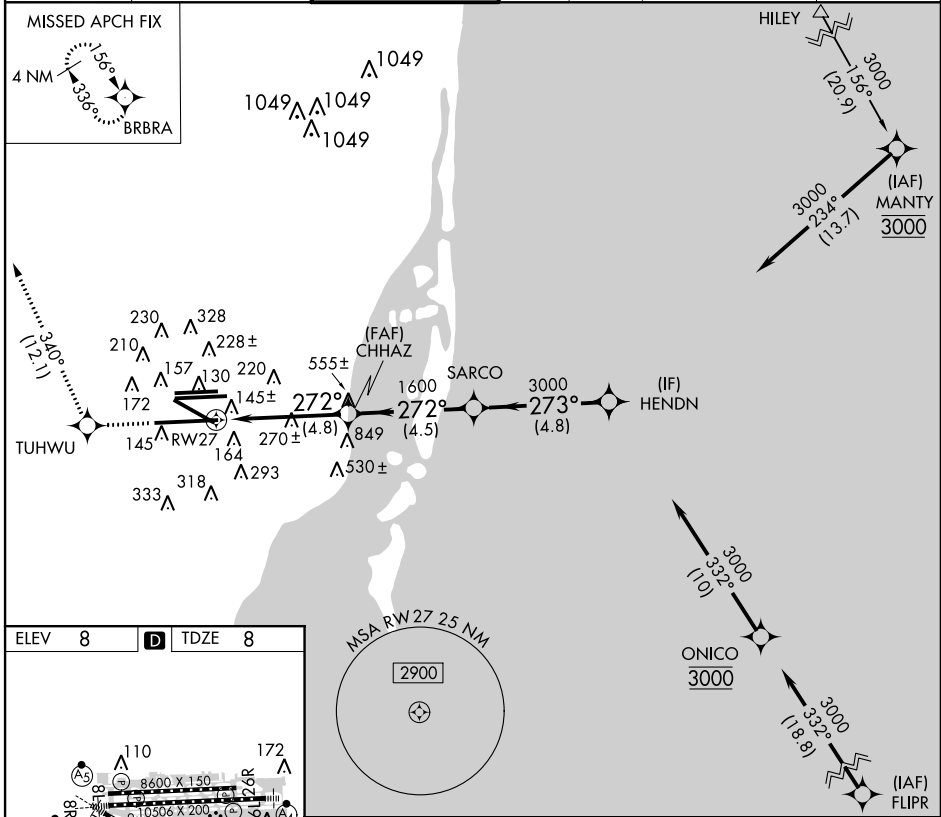
# RNAV (RNP) Y RWY 27

MIAMI INTL (MIA)

**GPS Required.** For inoperative MALSR, increase RNP 0.30 all Cats. visibility to 1½. For uncompensated Baro-VNAV systems, procedure NA below 6°C (42°F) or above 48°C (119°F).

**MALSR**  
 MISSED APPROACH: Climb to 2000 direct TUHWU and via track 340° to BRBRA and hold.

ATIS <b>119.15</b>	MIAMI APP CON <b>124.85 322.3</b>	MIAMI TOWER <b>118.3 256.9</b>	GND CON <b>121.8</b> (8L/8R/12/26L/26R) <b>127.5</b> (9/27/30)	<b>348.6</b>	CLNC DEL <b>135.35</b>
-----------------------	--------------------------------------	-----------------------------------	--	--------------	---------------------------



2000 TUHWU	BRBRA	VGSI and RNAV glidepath not coincident (VGSI Angle 3.00/TCH 71).			
↑	tr 340°	Procedure Turn NA			
RW27	CHHAZ 1600	SARCO 3000	HENDN 3000	GP 3.00° TCH 55	
4.8 NM	4.5 NM	4.8 NM			
CATEGORY	A	B	C	D	E
RNP 0.30 DA	455/50				447 (500-1)
<b>AUTHORIZATION REQUIRED</b>					

SE-3, 07 FEB 2013 to 07 MAR 2013

SE-3, 07 FEB 2013 to 07 MAR 2013