

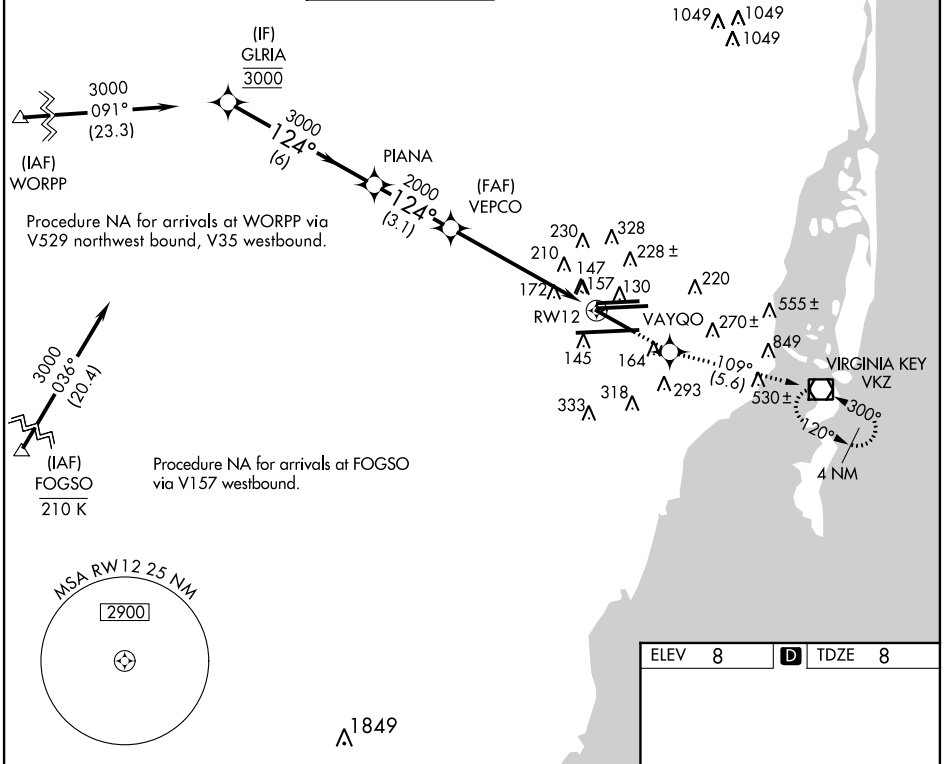
| | | |
|-------------|----------|-------------|
| APP CRS | Rwy Idg | 8579 |
| 124° | TDZE | 8 |
| | Apt Elev | 8 |

RNAV (RNP) Y RWY 12

MIAMI INTL (MIA)

| | | |
|---|----------------------|--|
| <p>▼ GPS Required. For inoperative MALSRL, increase 0.30 all Cats visibility to 1½. For uncompensated Baro-VNAV systems, procedure NA below 6°C (42°F) or above 49°C (120°F).</p> <p>▲ NA</p> | <p>MALSRL</p> | <p>MISSED APPROACH: Climb to 3000 direct VAYQO and via 109° track to VKZ VOR/DME and hold, continue climb-in-hold to 3000.</p> |
| | | |

| | | | | |
|---------------|---------------------|--------------------|---|-------------------------------|
| ATIS | MIAMI APP CON | MIAMI TOWER | GND CON | CLNC DEL |
| 119.15 | 124.85 322.3 | 118.3 256.9 | 121.8 (8L/8R/12/26L/26R) 127.5 (9/27/30) | 348.6 135.35 |



SE-3, 07 FEB 2013 to 07 MAR 2013

SE-3, 07 FEB 2013 to 07 MAR 2013

| | | | | |
|---|--|---------------------|---|---|
| Procedure Turn NA | <p>VGSI and RNAV glidepath not coincident (VGSI Angle 3.00/TCH 72).</p> <p>3000</p> <p>VAYQO</p> <p>109° tr</p> <p>VKZ</p> | <p>124° to RW12</p> | | |
| <p>GLRIA</p> <p>PIANA</p> <p>VEPCO</p> <p>RW12</p> <p>GP 3.00° TCH 56</p> <p>6 NM</p> <p>3.1 NM</p> <p>6 NM</p> | | | | |
| CATEGORY | A | B | C | D |
| RNP 0.30 DA | 461/50 453 (500-1) | | | |
| AUTHORIZATION REQUIRED | | | | |
| <p>TDZ/CL Rwy 8R</p> <p>REIL Rwy 8L and 26R</p> <p>HIRL all Rwy</p> | | | | |